



# GC Columns



**RESTEK**

[www.bgb-info.com/restek](http://www.bgb-info.com/restek)

Rev. date: 08/22



**Base-Deactivated Guard/Retention Gap Columns (fused silica)**

ID	Length	OD	qty.	cat.#
0.25 mm	5 m	0.37 ± 0.04 mm	ea.	10000
	5 m	0.37 ± 0.04 mm	6-pk.	10000-600
0.32 mm	5 m	0.45 ± 0.04 mm	ea.	10001
	5 m	0.45 ± 0.04 mm	6-pk.	10001-600
0.53 mm	5 m	0.69 ± 0.05 mm	ea.	10002
	5 m	0.69 ± 0.05 mm	6-pk.	10002-600



10000

**Deactivated Fused Silica Tubing (Nonpolar)**

ID	Length	OD	qty.	cat.#
0.25 mm	15 m	0.37 ± 0.04 mm	ea.	10009
	30 m	0.37 ± 0.04 mm	ea.	10010
	60 m	0.37 ± 0.04 mm	ea.	10011
0.32 mm	30 m	0.45 ± 0.04 mm	ea.	10020
	60 m	0.45 ± 0.04 mm	ea.	10021
0.53 mm	30 m	0.69 ± 0.05 mm	ea.	10030
	60 m	0.69 ± 0.05 mm	ea.	10031



10009

Note: 30- and 60-meter lengths are banded in 5-meter sections.

Recommendation: Cut 60 m guard columns into shorter lengths. Using full length may cause peak distortion.

**FAMEWAX Columns (USP G16) (fused silica) polar phase; Crossbond polyethylene glycol**

ID	df	Length	Temp. Limits	qty.	cat.#
0.25 mm	0.25 µm	30 m	20 to 240/250 °C	ea.	12497
0.32 mm	0.25 µm	30 m	20 to 240/250 °C	ea.	12498
0.53 mm	0.50 µm	30 m	20 to 250 °C	ea.	12499



**Fused Silica Tubing (Undeactivated, Untreated)**

ID	Length	OD	qty.	cat.#
0.25 mm	15 m	0.37 ± 0.04 mm	ea.	10050
	30 m	0.37 ± 0.04 mm	ea.	10051
	60 m	0.37 ± 0.04 mm	ea.	10052
0.32 mm	15 m	0.45 ± 0.04 mm	ea.	10055
	30 m	0.45 ± 0.04 mm	ea.	10056
0.53 mm	60 m	0.45 ± 0.04 mm	ea.	10057
	15 m	0.69 ± 0.05 mm	ea.	10060
	30 m	0.69 ± 0.05 mm	ea.	10061
	60 m	0.69 ± 0.05 mm	ea.	10062



10055

**GCxGC Selectivity Kit, 0.15 mm**

Includes	qty.	cat.#
Rxi-1ms Column (cat.# 15114); Rxi-5Sil MS Column (cat.# 15113); Rxi-XLB Column (cat.# 15115); Rxi-17Sil MS Column (cat.# 15110); Rtx-200 Column (cat.# 15111); Stabilwax Column (cat.# 15112); and a 5-pk. of Deactivated Universal Press-Tight Connectors (cat.# 20429)	kit	15129



**GCxGC Selectivity Kit, 0.18 mm**

Includes	qty.	cat.#
Rxi-1ms Column (cat.# 15120); Rxi-5Sil MS Column (cat.# 15119); Rxi-XLB Column (cat.# 15121); Rxi-17Sil MS Column (cat.# 15116); Rtx-200 Column (cat.# 15117); Stabilwax Column (cat.# 15118); and a 5-pk. of Deactivated Universal Press-Tight Connectors (cat.# 20429)	kit	15130



**GCxGC Selectivity Kit, 0.25 mm**

Includes	qty.	cat.#
Rxi-1ms Column (cat.# 15127); Rxi-5Sil MS Column (cat.# 15126); Rxi-XLB Column (cat.# 15128); Rxi-17Sil MS Column (cat.# 15123); Rtx-200 Column (cat.# 15124); Stabilwax Column (cat.# 15125); and a 5-pk. of Deactivated Universal Press-Tight Connectors (cat.# 20429)	kit	15131





**Hydroguard Water-Resistant Guard/Retention Gap Columns/Transfer Lines** (fused silica)

ID	Length	OD	qty.	cat.#
0.05 mm	5 m	0.363 ± 0.012 mm	ea.	10075
0.10 mm	5 m	0.363 ± 0.012 mm	ea.	10076
0.15 mm	5 m	0.363 ± 0.012 mm	ea.	10077
0.18 mm	5 m	0.37 ± 0.04 mm	ea.	10078
	5 m	0.37 ± 0.04 mm	ea.	10079
0.25 mm	5 m	0.37 ± 0.04 mm	6-pk.	10079-600
	10 m	0.37 ± 0.04 mm	ea.	10082
	30 m*	0.37 ± 0.04 mm	ea.	10085
0.32 mm	5 m	0.45 ± 0.04 mm	ea.	10080
	5 m	0.45 ± 0.04 mm	6-pk.	10080-600
	10 m	0.45 ± 0.04 mm	ea.	10083
	30 m*	0.45 ± 0.04 mm	ea.	10086
0.53 mm	5 m	0.69 ± 0.05 mm	ea.	10081
	5 m	0.69 ± 0.05 mm	6-pk.	10081-600
	10 m	0.69 ± 0.05 mm	ea.	10084
	30 m*	0.69 ± 0.05 mm	ea.	10087



10079

\*30-meter lengths are banded in 5-meter sections.

**Innovative Integra-Guard Columns**

ID	df	Length	Temp. Limits	Modification	Note	qty.	Similar to Part #	cat.#
<b>Rtx-1</b>								
0.25 mm	0.25 µm	15 m	-60 to 330/350 °C	w/5 m Integra-Guard Column		ea.		10120-124
	0.25 µm	30 m	-60 to 330/350 °C	w/5 m Integra-Guard Column		ea.		10123-124
	0.25 µm	60 m	-60 to 330/350 °C	w/10 m Integra-Guard Column		ea.		10126-127
	0.50 µm	60 m	-60 to 330/350 °C	w/10 m Integra-Guard Column		ea.		10141-127
0.32 mm	0.25 µm	60 m	-60 to 330/350 °C	w/5 m Integra-Guard Column		ea.		10127-125
	0.50 µm	60 m	-60 to 330/350 °C	w/5 m Integra-Guard Column		ea.		10142-125
0.53 mm	1.00 µm	30 m	-60 to 310/330 °C	w/5 m Integra-Guard Column		ea.		10155-126
	5.00 µm	30 m	-60 to 270/290 °C	w/5 m Integra-Guard Column		ea.		10179-126
<b>Rtx-1301/Rtx-G43</b>								
0.53 mm	3.00 µm	30 m	-20 to 240 °C	w/5 m Integra-Guard Column	Application-specific column for residual solvents in pharmaceutical products. Meets all requirements of USP <467>.	ea.		16085-126
<b>Rtx-1701</b>								
0.25 mm	0.25 µm	30 m	-20 to 280 °C	w/5 m Integra-Guard Column		ea.		12023-124
	0.50 µm	30 m	-20 to 270/280 °C	w/5 m Integra-Guard Column		ea.		12038-124
	1.00 µm	30 m	-20 to 260/280 °C	w/5 m Integra-Guard Column		ea.		12053-124
0.32 mm	0.25 µm	30 m	-20 to 280 °C	w/5 m Integra-Guard Column		ea.		12024-125
	0.25 µm	30 m	-20 to 280 °C	w/10 m Integra-Guard Column		ea.		12024-128
	0.50 µm	30 m	-20 to 270/280 °C	w/5 m Integra-Guard Column		ea.		12039-125
<b>Rtx-5</b>								
0.25 mm	0.25 µm	15 m	-60 to 330/350 °C	w/5 m Integra-Guard Column		ea.		10220-124
	0.25 µm	30 m	-60 to 330/350 °C	w/5 m Integra-Guard Column		ea.		10223-124
	0.25 µm	30 m	-60 to 330/350 °C	w/10 m Integra-Guard Column		ea.		10223-127
	1.00 µm	30 m	-60 to 320/340 °C	w/5 m Integra-Guard Column		ea.		10253-124



Continued



ID	df	Length	Temp. Limits	Modification	Note	qty.	Similar to Part #	cat.#
0.32 mm	0.25 µm	30 m	-60 to 330/350 °C	w/5 m Integra-Guard Column		ea.		10224-125
	1.00 µm	30 m	-60 to 330/350 °C	w/5 m Integra-Guard Column		ea.		10254-125
	0.25 µm	60 m	-60 to 330/350 °C	w/5 m Integra-Guard Column		ea.		10227-125
0.53 mm	0.50 µm	30 m	-60 to 310/330 °C	w/10 m Integra-Guard Column		ea.		10240-129
<b>Rtx-5/Rtx-G27</b>								
0.53 mm	5.00 µm	30 m	-60 to 270/290 °C	w/5 m Integra-Guard Column	Application-specific column for residual solvents in pharmaceutical products.	ea.		10279-126
<b>Rtx-5MS</b>								
0.25 mm	0.10 µm	30 m	-60 to 330/350 °C	w/5 m Integra-Guard Column		ea.		12608-124
	0.25 µm	15 m	-60 to 330/350 °C	w/5 m Integra-Guard Column		ea.		12620-124
	0.25 µm	15 m	-60 to 330/350 °C	w/5 m Integra-Guard Column		6-pk.		12620-124600
	0.25 µm	30 m	-60 to 330/350 °C	w/5 m Integra-Guard Column		ea.		12623-124
	0.25 µm	30 m	-60 to 330/350 °C	w/10 m Integra-Guard Column		ea.		12623-127
	0.25 µm	60 m	-60 to 330/350 °C	w/5 m Integra-Guard Column		ea.		12626-124
	0.25 µm	60 m	-60 to 330/350 °C	w/10 m Integra-Guard Column		ea.		12626-127
	0.50 µm	30 m	-60 to 330/350 °C	w/5 m Integra-Guard Column		ea.		12638-124
	0.50 µm	15 m	-60 to 330/350 °C	w/10 m Integra-Guard Column		ea.		12635-127
	0.50 µm	30 m	-60 to 330/350 °C	w/10 m Integra-Guard Column		ea.		12638-127
0.32 mm	0.25 µm	30 m	-60 to 330/350 °C	w/5 m Integra-Guard Column		ea.		12624-125
	1.00 µm	30 m	-60 to 325/350 °C	w/5 m Integra-Guard Column		ea.		12654-125
	1.00 µm	30 m	-60 to 325/350 °C	w/10 m Integra-Guard Column		ea.		12654-128
<b>Rtx-624</b>								
0.25 mm	1.40 µm	30 m	-20 to 240 °C	w/5 m Integra-Guard Column		ea.		10968-124
	1.40 µm	30 m	-20 to 240 °C	w/10 m Integra-Guard Column		ea.		10968-127
0.32 mm	1.80 µm	30 m	-20 to 240 °C	w/5 m Integra-Guard Column		ea.		10970-125
0.53 mm	3.00 µm	30 m	-20 to 240 °C	w/5 m Integra-Guard Column		ea.		10971-126
<b>Rxi-5Sil MS</b>								
0.25 mm	0.25 µm	15 m	-60 to 330/350 °C	w/10 m Integra-Guard Column		ea.		13620-127
	0.25 µm	30 m	-60 to 320/350 °C	w/5 m Integra-Guard Column		ea.	Agilent 122-5631G5; Phenomenex 7HG-G010-11-GGA	13623-124
	0.25 µm	30 m	-60 to 320/350 °C	w/10 m Integra-Guard Column		ea.	Agilent 122-5532G; Phenomenex 7HG-G010-11-GGC	13623-127
	0.25 µm	60 m	-60 to 320/350 °C	w/5 m Integra-Guard Column		ea.		13626-124
	0.25 µm	60 m	-60 to 320/350 °C	w/10 m Integra-Guard Column		ea.		13626-127
	0.50 µm	15 m	-60 to 330/350 °C	w/5 m Integra-Guard Column		ea.		13635-124
	0.50 µm	30 m	-60 to 320/350 °C	w/5 m Integra-Guard Column		ea.		13638-124
	0.50 µm	30 m	-60 to 320/350 °C	w/10 m Integra-Guard Column		ea.	Agilent 122-5536G	13638-127
	1.00 µm	30 m	-60 to 320/350 °C	w/5 m Integra-Guard Column		ea.		13653-124
	0.32 mm	0.50 µm	30 m	-60 to 330/350 °C	w/5 m Integra-Guard Column		ea.	
1.00 µm		30 m	-60 to 325/350 °C	w/5 m Integra-Guard Column		ea.		13654-125

Continued



ID	df	Length	Temp. Limits	Modification	Note	qty.	Similar to Part #	cat.#
<b>Stabilwax</b>								
0.25 mm	0.25 µm	30 m	40 to 250 °C	w/5 m Integra-Guard Column		ea.		10623-124
0.32 mm	1.00 µm	30 m	40 to 240/250 °C	w/5 m Integra-Guard Column		ea.		10654-125
0.53 mm	1.00 µm	30 m	40 to 240/250 °C	w/5 m Integra-Guard Column		ea.		10655-126
	1.00 µm	30 m	40 to 240/260 °C	w/10 m Integra-Guard Column		ea.		10655-129

If you don't see what you need here, contact Customer Service.

### Intermediate-Polarity Deactivated Guard/Retention Gap Columns/Transfer Lines (fused silica)

ID	Length	OD	qty.	Similar to Part #	cat.#
0.025 mm	1 m	0.363 ± 0.012 mm	ea.		10097
0.05 mm	1 m	0.363 ± 0.012 mm	ea.		10098
0.075 mm	1 m	0.363 ± 0.012 mm	ea.		10099
0.10 mm	1 m	0.363 ± 0.012 mm	ea.		10100
	5 m	0.363 ± 0.012 mm	ea.	Agilent 160-1010-5	10041
0.15 mm	1 m	0.363 ± 0.012 mm	ea.		10101
	5 m	0.363 ± 0.012 mm	ea.		10042
0.18 mm	1 m	0.37 ± 0.04 mm	ea.		10102
	5 m	0.37 ± 0.04 mm	ea.		10046
0.25 mm	5 m	0.37 ± 0.04 mm	6-pk.		10046-600
	5 m	0.37 ± 0.04 mm	ea.	Agilent 160-2255-5; Phenomenex 7AG-G000-00-GHO	10043
	5 m	0.37 ± 0.04 mm	6-pk.		10043-600
	10 m	0.37 ± 0.04 mm	ea.		10049
0.32 mm	10 m	0.37 ± 0.04 mm	6-pk.		10049-600
	30 m*	0.37 ± 0.04 mm	ea.		10012
	60 m*†	0.37 ± 0.04 mm	ea.		10013
	5 m	0.45 ± 0.04 mm	ea.	Agilent 160-2325-5; Phenomenex 7AM-G000-00-GHO	10044
0.53 mm	5 m	0.45 ± 0.04 mm	6-pk.		10044-600
	10 m	0.45 ± 0.04 mm	ea.	Agilent 160-2325-10; Phenomenex 7CM-G000-00-GHO	10048
	10 m	0.45 ± 0.04 mm	6-pk.		10048-600
	30 m*	0.45 ± 0.04 mm	ea.		10022
0.53 mm	60 m*†	0.45 ± 0.04 mm	ea.		10023
	5 m	0.69 ± 0.05 mm	ea.	Agilent 160-2535-5; Phenomenex 7AK-G000-00-GHO	10045
	5 m	0.69 ± 0.05 mm	6-pk.		10045-600
	10 m	0.69 ± 0.05 mm	ea.	Agilent 160-2535-10; Phenomenex 7CK-G000-00-GHO	10047
0.53 mm	30 m*	0.69 ± 0.05 mm	ea.		10032
	60 m*†	0.69 ± 0.05 mm	ea.		10033

\*30- and 60-meter lengths are banded in 5-meter sections.

†Recommendation: Cut 60 m guard columns into shorter lengths. Using full length may cause peak distortion.

### Low-Pressure GC (LPGC) Column Kit Leverage Your MS Vacuum to Significantly Speed Up Separations

Temp. Limits	Includes	qty.	cat.#
-60 to 340/340 °C	Factory-coupled restrictor column (5 m x 0.18 mm ID) and Rtx-5ms analytical column (15 m, 0.53 mm ID, 1 µm plus 1 m integrated transfer line on the outlet end)	kit	11800

### Polar-Deactivated Guard/Retention Gap Columns (fused silica) polar polyethylene glycol deactivation

ID	Length	OD	qty.	cat.#
0.25 mm	5 m	0.37 ± 0.04 mm	ea.	10065
	10 m	0.37 ± 0.04 mm	ea.	10068
	30 m*	0.37 ± 0.04 mm	ea.	10014
0.32 mm	5 m	0.45 ± 0.04 mm	ea.	10066
	10 m	0.45 ± 0.04 mm	ea.	10069
	5 m	0.69 ± 0.05 mm	ea.	10067
0.53 mm	10 m	0.69 ± 0.05 mm	ea.	10070
	30 m*	0.69 ± 0.05 mm	ea.	10034

\*30-meter lengths are banded in 5-meter sections.



10042



11800



10065



**Rt-2560 Column** (fused silica) highly polar phase; biscyanopropyl polysiloxane—not bonded

ID	df	Length	Temp. Limits	qty.	cat.#
0.25 mm	0.20 $\mu\text{m}$	100 m*	20 to 250 °C	ea.	13198

\*Nominal length = 100 m. The actual length is 110 m, which is equivalent to the length of the previous Rt-2560 column (cat.# 13199).

**Rt-CW20M F&F Columns** (fused silica) polar phase; Carbowax polyethylene glycol—not bonded

ID	df	Length	Temp. Limits	qty.	Similar to Part #	cat.#
0.25 mm	0.25 $\mu\text{m}$	30 m	60 to 220/250 °C	ea.	Agilent 112-2032	12523
0.32 mm	0.33 $\mu\text{m}$	50 m	60 to 220/250 °C	ea.	Agilent 19091W-015	12539

**Rt-TCEP Columns** (fused silica) highly polar phase; 1,2,3-tris[2-cyanoethoxy]propane—not bonded

ID	df	Length	Temp. Limits	qty.	cat.#
0.25 mm	0.40 $\mu\text{m}$	30 m	0 to 135/150 °C	ea.	10998
	0.40 $\mu\text{m}$	60 m	0 to 135/150 °C	ea.	10999

**Rt- $\beta$ DEXcst Columns** (fused silica) Proprietary cyclodextrin material added into 14% cyanopropylphenyl/86% dimethyl polysiloxane

ID	df	Length	Temp. Limits	qty.	cat.#
0.25 mm	0.25 $\mu\text{m}$	30 m	40 to 230 °C	ea.	13103
0.32 mm	0.25 $\mu\text{m}$	30 m	40 to 230 °C	ea.	13102

**Rt- $\beta$ DEXm Columns** (fused silica) permethylated beta cyclodextrin added into 14% cyanopropylphenyl/86% dimethyl polysiloxane

ID	df	Length	Temp. Limits	qty.	Similar to Part #	cat.#
0.25 mm	0.25 $\mu\text{m}$	30 m	40 to 230 °C	ea.	Agilent 112-2532, 19091G-B133	13100
0.32 mm	0.25 $\mu\text{m}$	30 m	40 to 230 °C	ea.	Agilent 113-2532, 19091G-B113	13101

**Rt- $\beta$ DEXsa Columns** (fused silica) 2,3-di-acetoxy-6-O-*tert*-butyl dimethylsilyl beta cyclodextrin added into 14% cyanopropylphenyl/86% dimethyl polysiloxane

ID	df	Length	Temp. Limits	qty.	cat.#
0.25 mm	0.25 $\mu\text{m}$	30 m	40 to 230 °C	ea.	13109
0.32 mm	0.25 $\mu\text{m}$	30 m	40 to 230 °C	ea.	13108

**Rt- $\beta$ DEXse Columns** (fused silica) 2,3-di-O-ethyl-6-O-*tert*-butyl dimethylsilyl beta cyclodextrin added into 14% cyanopropylphenyl/86% dimethyl polysiloxane

ID	df	Length	Temp. Limits	qty.	cat.#
0.25 mm	0.25 $\mu\text{m}$	30 m	40 to 230 °C	ea.	13107
0.32 mm	0.25 $\mu\text{m}$	30 m	40 to 230 °C	ea.	13106

**Rt- $\beta$ DEXsm Columns** (fused silica) 2,3-di-O-methyl-6-O-*tert*-butyl dimethylsilyl beta cyclodextrin added into 14% cyanopropylphenyl/86% dimethyl polysiloxane

ID	df	Length	Temp. Limits	qty.	Similar to Part #	cat.#
0.25 mm	0.25 $\mu\text{m}$	30 m	40 to 230 °C	ea.	Agilent 112-6632; Scion/Bruker/Varian CP7502	13105
0.32 mm	0.25 $\mu\text{m}$	30 m	40 to 230 °C	ea.	Agilent 113-6632; Scion/Bruker/Varian CP7503	13104

**Rt- $\beta$ DEXsp Columns** (fused silica) 2,3-di-O-propyl-6-O-*tert*-butyl dimethylsilyl beta cyclodextrin added into 14% cyanopropylphenyl/86% dimethyl polysiloxane

ID	df	Length	Temp. Limits	qty.	cat.#
0.25 mm	0.25 $\mu\text{m}$	30 m	40 to 230 °C	ea.	13111
0.32 mm	0.25 $\mu\text{m}$	30 m	40 to 230 °C	ea.	13110





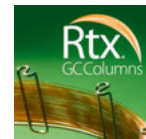
**Rt-yDEXsa Columns** (fused silica) 2,3-di-acetoxy-6-O-*tert*-butyl dimethylsilyl gamma cyclodextrin added into 14% cyanopropylphenyl/86% dimethyl polysiloxane

ID	df	Length	Temp. Limits	qty.	cat.#
0.25 mm	0.25 µm	30 m	40 to 230 °C	ea.	13113
0.32 mm	0.25 µm	30 m	40 to 230 °C	ea.	13112



**Rtx-1 Columns** (fused silica) nonpolar phase; Crossbond dimethyl polysiloxane

ID	df	Length	Temp. Limits	qty.	Similar to Part #	cat.#
0.10 mm	0.10 µm	10 m	-60 to 330/350 °C	ea.	Agilent 127-1012	41101
	0.10 µm	20 m	-60 to 330/360 °C	ea.	Agilent 127-1022	41102
	0.40 µm	10 m	-60 to 330/340 °C	ea.	Agilent 127-1013	41103
	0.40 µm	20 m	-60 to 330/350 °C	ea.	Agilent 127-1023	41104
0.18 mm	0.20 µm	10 m	-60 to 330/350 °C	ea.	Agilent 121-101A	40101
	0.20 µm	20 m	-60 to 330/350 °C	ea.	Agilent 121-102A	40102
	0.20 µm	40 m	-60 to 330/350 °C	ea.		40103
	0.40 µm	10 m	-60 to 330/340 °C	ea.	Agilent 121-1013	40110
0.25 mm	0.40 µm	20 m	-60 to 330/340 °C	ea.	Agilent 121-1023	40111
	0.40 µm	40 m	-60 to 330/340 °C	ea.	Agilent 121-1043	40112
	0.10 µm	15 m	-60 to 330/350 °C	ea.	Agilent 122-1011, 19091Z-331; Phenomenex 7EG-G001-02; Scion/Bruker/Varian CP7700, CP7810	10105
	0.10 µm	30 m	-60 to 330/350 °C	ea.	Agilent 122-1031, 19091Z-333; Phenomenex 7HG-G001-02; Scion/Bruker/Varian CP7817, CP8710	10108
	0.10 µm	60 m	-60 to 330/350 °C	ea.	Agilent 122-1061; Phenomenex 7KG-G001-02; Scion/Bruker/Varian CP7818	10111
	0.10 µm	105 m	-60 to 330/350 °C	ea.		10114
	0.25 µm	15 m	-60 to 330/350 °C	ea.	Agilent 122-1012, 19091Z-431; Phenomenex 7EG-G001-11; Scion/Bruker/Varian CP7811, CP8510	10120
	0.25 µm	30 m	-60 to 330/350 °C	ea.	Agilent 122-1032, 19091Z-433; Phenomenex 7HG-G001-11; Scion/Bruker/Varian CP7860, CP8741	10123
	0.25 µm	30 m	-60 to 330/350 °C	6-pk.		10123-600
	0.25 µm	60 m	-60 to 330/350 °C	ea.	Agilent 122-1062, 19091Z-436; Phenomenex 7KG-G001-11; Scion/Bruker/Varian CP7861, CP8743	10126
	0.25 µm	105 m	-60 to 330/350 °C	ea.		10129
	0.50 µm	15 m	-60 to 330/350 °C	ea.	Agilent 122-101E	10135
	0.50 µm	30 m	-60 to 330/350 °C	ea.	Agilent 122-103E; Phenomenex 7HG-G001-17	10138
	0.50 µm	60 m	-60 to 330/350 °C	ea.	Agilent 122-106E	10141
0.50 µm	105 m	-60 to 330/350 °C	ea.	Agilent 19091Z-530; Scion/Bruker/Varian CP7530	10144	
1.00 µm	15 m	-60 to 320/340 °C	ea.	Agilent 122-1013, 19091Z-231; Phenomenex 7EG-G001-22; Scion/Bruker/Varian CP7812, CP8520	10150	
1.00 µm	30 m	-60 to 320/340 °C	ea.	Agilent 122-1033, 19091Z-233; Phenomenex 7HG-G001-22; Scion/Bruker/Varian CP7670, CP7862, CP8770	10153	
1.00 µm	60 m	-60 to 320/340 °C	ea.	Agilent 122-1063, 19091Z-236; Phenomenex 7KG-G001-22; Scion/Bruker/Varian CP7857, CP8780	10156	
1.00 µm	105 m	-60 to 320/340 °C	ea.		10159	



Continued



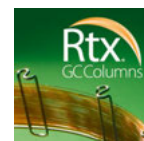
ID	df	Length	Temp. Limits	qty.	Similar to Part #	cat.#
0.32 mm	0.10 µm	15 m	-60 to 330/350 °C	ea.	Agilent 123-1011; Scion/Bruker/Varian CP7814	10106
	0.10 µm	30 m	-60 to 330/350 °C	ea.	Agilent 123-1031, 19091Z-313; Scion/Bruker/Varian CP7855, CP8740	10109
	0.10 µm	60 m	-60 to 330/350 °C	ea.	Agilent 123-1061; Phenomenex 7KM-G001-02; Scion/Bruker/Varian CP7856	10112
	0.25 µm	15 m	-60 to 330/350 °C	ea.	Agilent 123-1012, 19091Z-411; Phenomenex 7EM-G001-11; Scion/Bruker/Varian CP7815, CP8530	10121
	0.25 µm	30 m	-60 to 330/350 °C	ea.	Agilent 123-1032, 19091Z-413; Phenomenex 7HM-G001-11; Scion/Bruker/Varian CP7863, CP8742	10124
	0.25 µm	60 m	-60 to 330/350 °C	ea.	Agilent 123-1062, 19091Z-416; Phenomenex 7KM-G001-11; Scion/Bruker/Varian CP7864, CP8744	10127
	0.50 µm	15 m	-60 to 330/350 °C	ea.	Agilent 123-101E	10136
	0.50 µm	30 m	-60 to 330/350 °C	ea.	Agilent 123-103E; Phenomenex 7HM-G001-17	10139
	0.50 µm	60 m	-60 to 330/350 °C	ea.	Agilent 123-106E	10142
	1.00 µm	15 m	-60 to 320/340 °C	ea.	Agilent 123-1013, 19091Z-211; Phenomenex 7EM-G001-22; Scion/Bruker/Varian CP7758, CP8540	10151
	1.00 µm	30 m	-60 to 320/340 °C	ea.	Agilent 123-1033, 19091Z-213; Phenomenex 7HM-G001-22; Scion/Bruker/Varian CP7760, CP7865, CP8760	10154
	1.00 µm	30 m	-60 to 320/340 °C	6-pk.		10154-600
	1.00 µm	60 m	-60 to 320/340 °C	ea.	Agilent 123-1063, 19091Z-216; Phenomenex 7KM-G001-22; Scion/Bruker/Varian CP7866, CP8870	10157
	1.00 µm	105 m	-60 to 320/340 °C	ea.		10160
	1.50 µm	15 m	-60 to 310/330 °C	ea.		10166
	1.50 µm	30 m	-60 to 310/330 °C	ea.		10169
	1.50 µm	60 m	-60 to 310/330 °C	ea.	Agilent 123-106B	10172
	1.50 µm	105 m	-60 to 310/330 °C	ea.		10175
	3.00 µm	15 m	-60 to 280/300 °C	ea.	Agilent 123-1014; Scion/Bruker/Varian CP8550	10181
	3.00 µm	30 m	-60 to 280/300 °C	ea.	Agilent 123-1034, 19091Z-513; Scion/Bruker/Varian CP8687	10184
	3.00 µm	60 m	-60 to 280/300 °C	ea.	Agilent 123-1064; Phenomenex 7KM-G001-36; Scion/Bruker/Varian CP8689	10187
	3.00 µm	105 m	-60 to 260/280 °C	ea.		10190
	4.00 µm	30 m	-60 to 280/300 °C	ea.	Agilent 19091Z-613	10198
	5.00 µm	15 m	-60 to 260/280 °C	ea.	Agilent 123-1015; Scion/Bruker/Varian CP8560	10176
	5.00 µm	30 m	-60 to 260/280 °C	ea.	Agilent 123-1035, 19091Z-713; Phenomenex 7HM-G001-39; Scion/Bruker/Varian CP7680, CP8688	10178
	5.00 µm	60 m	-60 to 260/280 °C	ea.	Agilent 123-1065, 19091Z-716; Scion/Bruker/Varian CP8690	10180
	5.00 µm	60 m	-60 to 260/280 °C	6-pk.		10180-600
0.53 mm	0.10 µm	15 m	-60 to 320/340 °C	ea.		10107
	0.10 µm	30 m	-60 to 320/340 °C	ea.	Agilent 125-1039; Phenomenex 7HK-G001-02	10110
	0.25 µm	15 m	-60 to 320/340 °C	ea.	Agilent 125-101K	10122
	0.25 µm	30 m	-60 to 320/340 °C	ea.	Agilent 125-103K	10125
	0.25 µm	60 m	-60 to 320/340 °C	ea.		10128
	0.50 µm	15 m	-60 to 310/330 °C	ea.	Agilent 125-1017; Phenomenex 7EK-G001-17	10137
	0.50 µm	30 m	-60 to 310/330 °C	ea.	Agilent 125-1037; Phenomenex 7HK-G001-17	10140
	0.50 µm	60 m	-60 to 310/330 °C	ea.		10143
	1.00 µm	15 m	-60 to 310/330 °C	ea.	Agilent 125-101J; Scion/Bruker/Varian CP7625	10152
	1.00 µm	30 m	-60 to 310/330 °C	ea.	Agilent 125-103J	10155
	1.00 µm	60 m	-60 to 310/330 °C	ea.	Agilent 125-106J	10158
	1.50 µm	15 m	-60 to 310/330 °C	ea.	Agilent 125-1012, 19095Z-321; Phenomenex 7EK-G001-28; Scion/Bruker/Varian CP8674	10167
	1.50 µm	30 m	-60 to 310/330 °C	ea.	Agilent 125-1032, 19095Z-323; Phenomenex 7HK-G001-28; Scion/Bruker/Varian CP8735	10170
	1.50 µm	60 m	-60 to 310/330 °C	ea.	Agilent 125-1062; Phenomenex 7KK-G001-28; Scion/Bruker/Varian CP8799	10173
	3.00 µm	15 m	-60 to 270/290 °C	ea.	Agilent 125-1014, 19095Z-421; Phenomenex 7EK-G001-36; Scion/Bruker/Varian CP8675	10182
	3.00 µm	30 m	-60 to 270/290 °C	ea.	Agilent 125-1034, 19095Z-423; Phenomenex 7HK-G001-36; Scion/Bruker/Varian CP8677	10185
	3.00 µm	60 m	-60 to 270/290 °C	ea.	Agilent 125-1064	10188
	3.00 µm	105 m	-60 to 270/290 °C	ea.		10189
	5.00 µm	15 m	-60 to 270/290 °C	ea.	Agilent 125-1015, 19095Z-621; Phenomenex 7EK-G001-39; Scion/Bruker/Varian CP8676	10177
	5.00 µm	30 m	-60 to 270/290 °C	ea.	Agilent 125-1035, 19095Z-623; Phenomenex 7HK-G001-39; Scion/Bruker/Varian CP8775	10179
	5.00 µm	30 m	-60 to 270/290 °C	6-pk.		10179-600
	5.00 µm	60 m	-60 to 270/290 °C	ea.	Agilent 125-1065, 19095Z-626; Scion/Bruker/Varian CP8685	10183
	5.00 µm	105 m	-60 to 240/260 °C	ea.		10194
	7.00 µm	15 m	-60 to 240/260 °C	ea.		10191
	7.00 µm	30 m	-60 to 240/260 °C	ea.		10192
	7.00 µm	60 m	-60 to 240/260 °C	ea.		10193





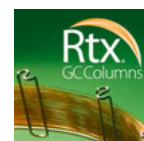
**Rtx-1301 (G43) Columns** (fused silica) low- to midpolarity phase

ID	df	Length	Temp. Limits	qty.	Similar to Part #	cat.#
0.25 mm	0.10 µm	30 m	-20 to 280 °C	ea.		16008
	0.25 µm	15 m	-20 to 280 °C	ea.	Agilent 122-1312; Scion/Bruker/Varian CP8600	16020
	0.25 µm	30 m	-20 to 280 °C	ea.	Agilent 122-1332; Scion/Bruker/Varian CP8601	16023
	0.25 µm	60 m	-20 to 280 °C	ea.	Agilent 122-1362; Scion/Bruker/Varian CP8602	16026
	0.50 µm	30 m	-20 to 270 °C	ea.	Agilent 122-1336	16038
	1.00 µm	30 m	-20 to 260 °C	ea.	Agilent 122-1333; Scion/Bruker/Varian CP8604	16053
	1.00 µm	60 m	-20 to 260 °C	ea.	Agilent 122-1363; Scion/Bruker/Varian CP8605	16056
	1.00 µm	105 m	-20 to 260 °C	ea.		16059
	1.40 µm	60 m	-20 to 240 °C	ea.		16016
0.32 mm	0.10 µm	30 m	-20 to 280 °C	ea.		16009
	0.25 µm	15 m	-20 to 280 °C	ea.	Agilent 123-1213	16021
	0.25 µm	30 m	-20 to 280 °C	ea.	Agilent 123-1332; Scion/Bruker/Varian CP8607	16024
	0.50 µm	30 m	-20 to 270 °C	ea.		16039
	1.00 µm	30 m	-20 to 260 °C	ea.	Agilent 123-1333; Scion/Bruker/Varian CP8610	16054
	1.00 µm	60 m	-20 to 260 °C	ea.	Agilent 123-1363; Scion/Bruker/Varian CP8611	16057
	1.50 µm	15 m	-20 to 250 °C	ea.		16066
	1.50 µm	30 m	-20 to 250 °C	ea.		16069
	1.50 µm	60 m	-20 to 250 °C	ea.		16072
0.53 mm	1.80 µm	30 m	-20 to 240 °C	ea.		16092
	1.80 µm	60 m	-20 to 240 °C	ea.		16093
	0.25 µm	30 m	-20 to 280 °C	ea.		16025
	0.50 µm	30 m	-20 to 270 °C	ea.		16040
	0.50 µm	60 m	-20 to 260/270 °C	ea.		16043
	1.00 µm	15 m	-20 to 260 °C	ea.	Agilent 125-1312; Scion/Bruker/Varian CP8612	16052
	1.00 µm	30 m	-20 to 260 °C	ea.	Agilent 125-1332; Scion/Bruker/Varian CP8613	16055
	1.00 µm	60 m	-20 to 260 °C	ea.		16058
	1.50 µm	30 m	-20 to 250 °C	ea.	Agilent 125-1333	16070
	3.00 µm	30 m	-20 to 240 °C	ea.		16085
	3.00 µm	60 m	-20 to 240 °C	ea.		16088
3.00 µm	75 m	-20 to 240 °C	ea.		16076	
3.00 µm	105 m	-20 to 240 °C	ea.		16091	



**Rtx-1614 Columns** (fused silica) 5% diphenyl, 95% dimethyl polysiloxane

ID	df	Length	Temp. Limits	qty.	cat.#
0.25 mm	0.10 µm	15 m	-60 to 330/360 °C	ea.	10296
	0.10 µm	30 m	-60 to 330/360 °C	ea.	10295



**Rtx-1701 Columns** (fused silica) midpolarity Crossbond phase

ID	df	Length	Temp. Limits	qty.	Similar to Part #	cat.#
0.10 mm	0.10 µm	10 m	-20 to 280 °C	ea.		42201
	0.10 µm	20 m	-20 to 270/280 °C	ea.	Agilent 127-0722	42202
	0.20 µm	10 m	-20 to 280 °C	ea.		42001
0.18 mm	0.20 µm	20 m	-20 to 280 °C	ea.		42002
	0.20 µm	40 m	-20 to 280 °C	ea.		42003
	0.40 µm	20 m	-20 to 280 °C	ea.	Agilent 121-0723	42011
	0.40 µm	40 m	-20 to 280 °C	ea.		42012
	0.10 µm	30 m	-20 to 280 °C	ea.		12008
0.25 mm	0.10 µm	60 m	-20 to 280 °C	ea.		12011
	0.25 µm	15 m	-20 to 280 °C	ea.	Agilent 122-0712; Phenomenex 7EG-G006-11; Scion/Bruker/Varian CP8512	12020
	0.25 µm	30 m	-20 to 280 °C	ea.	Agilent 122-0732; Phenomenex 7HG-G006-11; Scion/Bruker/Varian CP8712	12023
	0.25 µm	30 m	-20 to 280 °C	6-pk.		12023-600
	0.25 µm	60 m	-20 to 280 °C	ea.	Agilent 122-0762; Phenomenex 7KG-G006-11; Scion/Bruker/Varian CP8722	12026
	0.50 µm	15 m	-20 to 270/280 °C	ea.		12035
	0.50 µm	30 m	-20 to 270/280 °C	ea.		12038
	0.50 µm	60 m	-20 to 270/280 °C	ea.	Agilent 122-0766	12041
	1.00 µm	15 m	-20 to 260/280 °C	ea.	Agilent 122-0713	12050
	1.00 µm	30 m	-20 to 260/280 °C	ea.	Agilent 122-0733; Phenomenex 7HG-G006-22; Scion/Bruker/Varian CP8562	12053
	1.00 µm	60 m	-20 to 260/280 °C	ea.	Agilent 122-0763; Scion/Bruker/Varian CP8572	12056
1.00 µm	105 m	-20 to 260/280 °C	ea.		12059	



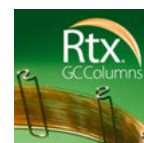
Continued



ID	df	Length	Temp. Limits	qty.	Similar to Part #	cat.#	
0.32 mm	0.10 µm	30 m	-20 to 280 °C	ea.		12009	
	0.25 µm	15 m	-20 to 280 °C	ea.	Agilent 123-0712; Phenomenex 7EM-G006-11; Scion/Bruker/Varian CP8542	12021	
	0.25 µm	30 m	-20 to 280 °C	ea.	Agilent 123-0732; Phenomenex 7HM-G006-11; Scion/Bruker/Varian CP8842	12024	
	0.25 µm	60 m	-20 to 280 °C	ea.	Agilent 123-0762; Phenomenex 7KM-G006-11; Scion/Bruker/Varian CP8852	12027	
	0.25 µm	105 m	-20 to 270/280 °C	ea.		12030	
	0.50 µm	15 m	-20 to 270/280 °C	ea.		12036	
	0.50 µm	30 m	-20 to 270/280 °C	ea.		12039	
	0.50 µm	60 m	-20 to 270/280 °C	ea.		12042	
	1.00 µm	15 m	-20 to 260/280 °C	ea.	Agilent 123-0713; Phenomenex 7EM-G006-22; Scion/Bruker/Varian CP8552	12051	
	1.00 µm	30 m	-20 to 260/280 °C	ea.	Agilent 123-0733; Phenomenex 7HM-G006-22; Scion/Bruker/Varian CP8762	12054	
	1.00 µm	60 m	-20 to 260/280 °C	ea.	Agilent 123-0763; Scion/Bruker/Varian CP8772	12057	
	1.00 µm	105 m	-20 to 250/280 °C	ea.		12060	
	1.50 µm	15 m	-20 to 240/260 °C	ea.		12066	
	1.50 µm	30 m	-20 to 240/260 °C	ea.		12069	
	1.50 µm	60 m	-20 to 240/260 °C	ea.		12072	
	1.50 µm	105 m	-20 to 240/260 °C	ea.		12075	
	0.53 mm	0.10 µm	30 m	-20 to 270/280 °C	ea.		12010
		0.25 µm	30 m	-20 to 270/280 °C	ea.	Agilent 125-0731	12025
0.50 µm		15 m	-20 to 260/270 °C	ea.	Agilent 125-0717; Scion/Bruker/Varian CP8663	12037	
0.50 µm		30 m	-20 to 260/270 °C	ea.	Agilent 125-0737	12040	
1.00 µm		15 m	-20 to 250/270 °C	ea.	Agilent 125-0712	12052	
1.00 µm		30 m	-20 to 250/270 °C	ea.	Agilent 125-0732; Phenomenex 7HK-G006-22; Scion/Bruker/Varian CP8737	12055	
1.00 µm		60 m	-20 to 240/270 °C	ea.		12058	
1.50 µm		30 m	-20 to 240/260 °C	ea.	Agilent 125-0733	12070	
1.50 µm		60 m	-20 to 240/260 °C	ea.	Agilent 125-0763	12073	
3.00 µm		15 m	-20 to 230/250 °C	ea.		12082	
3.00 µm		30 m	-20 to 230/250 °C	ea.		12085	
3.00 µm		60 m	-20 to 220/250 °C	ea.		12088	

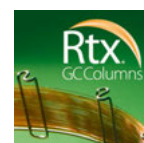
**Rtx-20 Columns** (fused silica) low- to midpolarity phase; Crossbond diphenyl dimethyl polysiloxane

ID	df	Length	Temp. Limits	qty.	cat.#
0.25 mm	0.10 µm	30 m	-20 to 300/320 °C	ea.	10308
	0.25 µm	15 m	-20 to 300/320 °C	ea.	10320
	0.25 µm	30 m	-20 to 300/320 °C	ea.	10323
	0.50 µm	30 m	-20 to 290/310 °C	ea.	10338
	1.00 µm	30 m	-20 to 280/300 °C	ea.	10353
0.32 mm	0.25 µm	30 m	-20 to 300/320 °C	ea.	10324
	0.50 µm	30 m	-20 to 290/310 °C	ea.	10339
	1.00 µm	30 m	-20 to 280/300 °C	ea.	10354
0.53 mm	1.50 µm	30 m	-20 to 270/290 °C	ea.	10369
	0.50 µm	30 m	-20 to 260/280 °C	ea.	10340
	1.00 µm	15 m	-20 to 260/280 °C	ea.	10352
0.53 mm	1.00 µm	30 m	-20 to 260/280 °C	ea.	10355
	1.50 µm	30 m	-20 to 250/270 °C	ea.	10370



**Rtx-200 Columns** (fused silica) midpolarity phase; Crossbond trifluoropropylmethyl polysiloxane

ID	df	Length	Temp. Limits	qty.	Similar to Part #	cat.#
0.15 mm	0.15 µm	10 m	-20 to 320/340 °C	ea.		43835
	0.15 µm	20 m	-20 to 320/340 °C	ea.		43836
	0.20 µm	10 m	-20 to 310/360 °C	ea.		45001
	0.20 µm	20 m	-20 to 310/360 °C	ea.		45002
0.18 mm	0.20 µm	40 m	-20 to 310/360 °C	ea.		45003
	0.40 µm	10 m	-20 to 310/360 °C	ea.		45010
	0.40 µm	20 m	-20 to 310/360 °C	ea.	Agilent 121-2023	45011
	0.40 µm	40 m	-20 to 310/360 °C	ea.		45012



Continued



ID	df	Length	Temp. Limits	qty.	Similar to Part #	cat.#
0.25 mm	0.25 µm	15 m	-20 to 320/340 °C	ea.	Agilent 122-2012	15020
	0.25 µm	30 m	-20 to 320/340 °C	ea.	Agilent 122-2032	15023
	0.25 µm	60 m	-20 to 320/340 °C	ea.		15026
	0.25 µm	105 m	-20 to 310/340 °C	ea.		15029
	0.50 µm	15 m	-20 to 310/330 °C	ea.	Agilent 122-2013	15035
	0.50 µm	30 m	-20 to 310/330 °C	ea.	Agilent 122-2033	15038
	0.50 µm	60 m	-20 to 310/330 °C	ea.		15041
	0.50 µm	105 m	-20 to 290/330 °C	ea.		15044
	1.00 µm	15 m	-20 to 290/310 °C	ea.		15050
	1.00 µm	30 m	-20 to 290/310 °C	ea.		15053
	1.00 µm	60 m	-20 to 290/310 °C	ea.		15056
	1.00 µm	105 m	-20 to 280/310 °C	ea.		15059
0.32 mm	0.10 µm	30 m	-20 to 320/340 °C	ea.		15009
	0.25 µm	15 m	-20 to 320/340 °C	ea.		15021
	0.25 µm	30 m	-20 to 320/340 °C	ea.	Agilent 123-2032	15024
	0.25 µm	60 m	-20 to 320/340 °C	ea.		15027
	0.50 µm	15 m	-20 to 310/330 °C	ea.		15036
	0.50 µm	30 m	-20 to 310/330 °C	ea.	Agilent 123-2033	15039
	0.50 µm	60 m	-20 to 310/330 °C	ea.		15042
	0.50 µm	105 m	-20 to 290 °C	ea.		15045
	1.00 µm	15 m	-20 to 290/310 °C	ea.		15051
	1.00 µm	30 m	-20 to 290/310 °C	ea.		15054
	1.00 µm	60 m	-20 to 290/310 °C	ea.		15057
	1.00 µm	105 m	-20 to 280/310 °C	ea.		15060
0.53 mm	1.50 µm	30 m	-20 to 280/300 °C	ea.		15069
	1.50 µm	60 m	-20 to 280/300 °C	ea.		15072
	1.50 µm	105 m	-20 to 280/300 °C	ea.		15075
	0.25 µm	15 m	-20 to 310/330 °C	ea.		15022
	0.25 µm	30 m	-20 to 310/330 °C	ea.		15025
	0.50 µm	30 m	-20 to 300/320 °C	ea.	Agilent 125-2037	15040
	0.50 µm	60 m	-20 to 290/320 °C	ea.		15043
	1.00 µm	15 m	-20 to 290/310 °C	ea.	Agilent 125-2012	15052
	1.00 µm	30 m	-20 to 290/310 °C	ea.	Agilent 125-2032	15055
	1.00 µm	60 m	-20 to 280/310 °C	ea.		15058
	1.50 µm	15 m	-20 to 280/300 °C	ea.		15067
	1.50 µm	30 m	-20 to 280/300 °C	ea.		15070
1.50 µm	60 m	-20 to 260/300 °C	ea.		15073	
3.00 µm	15 m	-20 to 260/280 °C	ea.		15082	
3.00 µm	30 m	-20 to 260/280 °C	ea.		15085	
3.00 µm	60 m	-20 to 240/280 °C	ea.		15088	
3.00 µm	105 m	-20 to 260/280 °C	ea.		15091	

**Rtx-200 Secondary Columns for GCxGC** (fused silica) midpolarity phase; Crossbond trifluoropropylmethyl polysiloxane

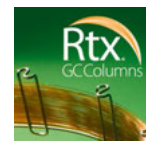
ID	df	Length	Temp. Limits	qty.	cat.#
0.15 mm	0.15 µm	2 m	-20 to 320/340 °C	ea.	15111
0.18 mm	0.18 µm	2 m	-20 to 320/340 °C	ea.	15117
0.25 mm	0.25 µm	2 m	-20 to 320/340 °C	ea.	15124



15115

**Rtx-200MS—Low-Bleed GC-MS Columns** (fused silica) midpolarity phase; Crossbond trifluoropropylmethyl polysiloxane

ID	df	Length	Temp. Limits	qty.	Similar to Part #	cat.#
0.25 mm	0.10 µm	15 m	-20 to 320/340 °C	ea.		15605
	0.10 µm	30 m	-20 to 320/340 °C	ea.		15608
	0.25 µm	15 m	-20 to 320/340 °C	ea.	Agilent 122-2012	15620
	0.25 µm	30 m	-20 to 320/340 °C	ea.	Agilent 122-2032	15623
	0.50 µm	15 m	-20 to 310/330 °C	ea.	Agilent 122-2013	15635
	0.50 µm	30 m	-20 to 310/330 °C	ea.	Agilent 122-2033	15638
0.32 mm	1.00 µm	30 m	-20 to 290/310 °C	ea.		15653
	0.25 µm	30 m	-20 to 320/340 °C	ea.	Agilent 123-2032	15624
	0.50 µm	30 m	-20 to 310/330 °C	ea.	Agilent 123-2033	15639
0.53 mm	1.00 µm	30 m	-20 to 290/310 °C	ea.		15654
	1.00 µm	30 m	-20 to 290/310 °C	ea.	Agilent 125-2032	15655
	1.50 µm	30 m	-20 to 280/300 °C	ea.		15670





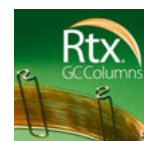
**Rtx-225 Columns** (fused silica) polar phase; Crossbond cyanopropylmethyl phenylmethyl polysiloxane

ID	df	Length	Temp. Limits	qty.	Similar to Part #	cat.#
0.25 mm	0.25 µm	15 m	40 to 220/240 °C	ea.	Agilent 122-2212; Scion/Bruker/Varian CP7705	14020
	0.25 µm	30 m	40 to 220/240 °C	ea.	Agilent 122-2232; Scion/Bruker/Varian CP7715	14023
	0.25 µm	60 m	40 to 200/240 °C	ea.		14026
	0.50 µm	30 m	40 to 220/240 °C	ea.		14038
	0.25 µm	15 m	40 to 220/240 °C	ea.	Agilent 123-2212; Scion/Bruker/Varian CP7735	14021
0.32 mm	0.25 µm	30 m	40 to 220/240 °C	ea.	Agilent 123-2232; Scion/Bruker/Varian CP7745	14024
	0.50 µm	30 m	40 to 220/240 °C	ea.		14039
	1.00 µm	15 m	40 to 200/220 °C	ea.		14051
	1.00 µm	30 m	40 to 200/220 °C	ea.		14054
	1.00 µm	60 m	40 to 200/220 °C	ea.		14057
0.53 mm	0.25 µm	15 m	40 to 200/220 °C	ea.		14022
	0.25 µm	30 m	40 to 200/220 °C	ea.		14025
	0.50 µm	30 m	40 to 200/220 °C	ea.	Agilent 125-2237	14040
	1.00 µm	15 m	40 to 200/220 °C	ea.	Agilent 125-2212	14052
	1.00 µm	30 m	40 to 200/220 °C	ea.	Agilent 125-2232	14055



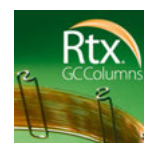
**Rtx-2330 Columns** (fused silica) highly polar phase; biscyanopropyl cyanopropylphenyl polysiloxane

ID	df	Length	Temp. Limits	qty.	cat.#
0.18 mm	0.10 µm	10 m	0 to 260 °C	ea.	40701
	0.10 µm	20 m	0 to 260 °C	ea.	40702
	0.10 µm	40 m	0 to 260 °C	ea.	40703
0.25 mm	0.10 µm	30 m	0 to 260/275 °C	ea.	10708
	0.10 µm	60 m	0 to 260/275 °C	ea.	10711
	0.10 µm	105 m	0 to 260/275 °C	ea.	10714
	0.20 µm	30 m	0 to 260/275 °C	ea.	10723
	0.20 µm	60 m	0 to 260/275 °C	ea.	10726
0.32 mm	0.20 µm	105 m	0 to 260/275 °C	ea.	10729
	0.20 µm	15 m	0 to 260/275 °C	ea.	10721
	0.20 µm	30 m	0 to 260/275 °C	ea.	10724
	0.20 µm	60 m	0 to 260/275 °C	ea.	10727
	0.20 µm	105 m	0 to 260/275 °C	ea.	10730
0.53 mm	0.20 µm	30 m	0 to 260/275 °C	ea.	10725



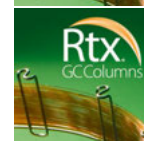
**Rtx-2887 Column** (fused silica) nonpolar phase; Crossbond 100% dimethyl polysiloxane—for simulated distillation

ID	df	Length	Temp. Limits	qty.	Similar to Part #	cat.#
0.53 mm	2.65 µm	10 m	-60 to 360 °C	ea.	Agilent 125-2814; Phenomenex 7CK-G001-35	10199



**Rtx-35 Amine Columns** (fused silica) midpolarity phase; Crossbond 35% diphenyl/65% dimethyl polysiloxane

ID	df	Length	Temp. Limits	qty.	cat.#
0.25 mm	0.50 µm	15 m	0 to 220 °C	ea.	11335
	0.50 µm	30 m	0 to 220 °C	ea.	11338
	1.00 µm	15 m	0 to 220 °C	ea.	11350
	1.00 µm	30 m	0 to 220 °C	ea.	11353
	1.00 µm	15 m	0 to 220 °C	ea.	11351
0.32 mm	1.00 µm	30 m	0 to 220 °C	ea.	11354
	1.50 µm	15 m	0 to 220 °C	ea.	11366
	1.50 µm	30 m	0 to 220 °C	ea.	11369
0.53 mm	1.00 µm	15 m	0 to 220 °C	ea.	11352
	1.00 µm	30 m	0 to 220 °C	ea.	11355
	3.00 µm	30 m	0 to 220 °C	ea.	11385



Note: We recommend using base-deactivated fused silica guard columns and base-deactivated liners with Rtx-35 Amine columns.

**Rtx-35 Columns** (fused silica) midpolarity phase; Crossbond diphenyl dimethyl polysiloxane

ID	df	Length	Temp. Limits	qty.	Similar to Part #	cat.#
0.18 mm	0.20 µm	20 m	40 to 300/320 °C	ea.		40402
	0.40 µm	10 m	40 to 290/310 °C	ea.		40410



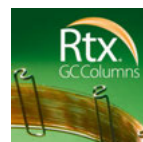
Continued



ID	df	Length	Temp. Limits	qty.	Similar to Part #	cat.#
0.25 mm	0.10 µm	30 m	40 to 320 °C	ea.		10408
	0.25 µm	15 m	40 to 320 °C	ea.	Agilent 19091G-131	10420
	0.25 µm	30 m	40 to 320 °C	ea.	Agilent 122-1932, 19091G-133	10423
	0.25 µm	60 m	40 to 300/320 °C	ea.	Agilent 122-1962, 19091G-136	10426
	0.50 µm	15 m	40 to 310 °C	ea.		10435
	0.50 µm	30 m	40 to 310 °C	ea.	Agilent 122-1933	10438
	0.50 µm	60 m	40 to 290/310 °C	ea.		10441
	1.00 µm	30 m	40 to 290 °C	ea.	Agilent 122-1934	10453
	1.00 µm	60 m	40 to 280/300 °C	ea.		10456
0.32 mm	0.25 µm	15 m	40 to 320 °C	ea.		10421
	0.25 µm	30 m	40 to 320 °C	ea.	Agilent 123-1932, 19091G-113	10424
	0.50 µm	30 m	40 to 310 °C	ea.	Agilent 123-1933	10439
	1.00 µm	30 m	40 to 290 °C	ea.	Agilent 123-1934	10454
	3.00 µm	60 m	40 to 250/270 °C	ea.		10487
	0.50 µm	15 m	40 to 300 °C	ea.		10437
0.53 mm	0.50 µm	30 m	40 to 300 °C	ea.	Agilent 125-1937, 19095G-523	10440
	1.00 µm	60 m	40 to 250/280 °C	ea.		10458
	1.00 µm	30 m	40 to 290 °C	ea.	Agilent 125-1932, 19095G-123	10455
	1.50 µm	30 m	40 to 280 °C	ea.		10470
	3.00 µm	30 m	40 to 240/260 °C	ea.		10485

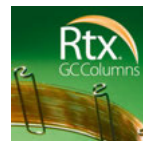
**Rtx-440 Columns** (fused silica) midpolarity proprietary Crossbond phase

ID	df	Length	Temp. Limits	qty.	cat.#
0.18 mm	0.18 µm	20 m	20 to 320 °C	ea.	42902
	0.25 µm	30 m	20 to 320/340 °C	ea.	12923
0.25 mm	0.50 µm	30 m	20 to 320/340 °C	ea.	12938
	0.25 µm	30 m	20 to 320/340 °C	ea.	12924
0.32 mm	0.50 µm	30 m	20 to 320/340 °C	ea.	12939
	0.50 µm	30 m	20 to 320/340 °C	ea.	12940



**Rtx-5 (G27) Columns** (fused silica) low-polarity phase; Crossbond diphenyl dimethyl polysiloxane

ID	df	Length	Temp. Limits	qty.	Similar to Part #	cat.#
0.10 mm	0.10 µm	10 m	-60 to 330/350 °C	ea.	Agilent 127-5012; Scion/Bruker/Varian CP7315	41201
	0.10 µm	20 m	-60 to 330/350 °C	ea.	Agilent 127-5022	41202
	0.40 µm	20 m	-60 to 320/340 °C	ea.	Agilent 127-5023	41204
0.18 mm	0.20 µm	10 m	-60 to 325/340 °C	ea.		40201
	0.20 µm	20 m	-60 to 325/340 °C	ea.		40202
	0.20 µm	40 m	-60 to 325/340 °C	ea.		40203
	0.40 µm	10 m	-60 to 315/330 °C	ea.	Agilent 121-5013	40210
	0.40 µm	20 m	-60 to 315/330 °C	ea.	Agilent 121-5023	40211
	0.40 µm	40 m	-60 to 315/330 °C	ea.	Agilent 121-5043	40212



Continued



ID	df	Length	Temp. Limits	qty.	Similar to Part #	cat.#
0.25 mm	0.10 µm	15 m	-60 to 330/350 °C	ea.	Agilent 122-5011; Phenomenex 7EG-G002-02	10205
	0.10 µm	30 m	-60 to 330/350 °C	ea.	Agilent 122-5031, 19091J-333; Phenomenex 7HG-G002-02; Scion/Bruker/Varian CP7711	10208
	0.10 µm	60 m	-60 to 330/350 °C	ea.	Agilent 122-5061; Phenomenex 7KG-G002-02; Scion/Bruker/Varian CP7721	10211
	0.25 µm	15 m	-60 to 330/350 °C	ea.	Agilent 122-5012, 19091J-431; Phenomenex 7EG-G002-11; Scion/Bruker/Varian CP8511	10220
	0.25 µm	15 m	-60 to 330/350 °C	6-pk.		10220-600
	0.25 µm	30 m	-60 to 330/350 °C	ea.	Agilent 122-5032, 19091J-433; Phenomenex 7HG-G002-11; Scion/Bruker/Varian CP8751	10223
	0.25 µm	30 m	-60 to 330/350 °C	6-pk.		10223-600
	0.25 µm	60 m	-60 to 330/350 °C	ea.	Agilent 122-5062, 19091J-436; Phenomenex 7KG-G002-11; Scion/Bruker/Varian CP8753	10226
	0.25 µm	60 m	-60 to 330/350 °C	6-pk.		10226-600
	0.25 µm	105 m	-60 to 320/350 °C	ea.		10229
	0.50 µm	15 m	-60 to 330/350 °C	ea.	Agilent 122-501E; Phenomenex 7EG-G002-17	10235
	0.50 µm	15 m	-60 to 330/350 °C	6-pk.		10235-600
	0.50 µm	30 m	-60 to 330 °C	ea.	Agilent 122-503E; Phenomenex 7HG-G002-17; Scion/Bruker/Varian CP7759	10238
	0.50 µm	60 m	-60 to 320/350 °C	ea.	Agilent 122-506E; Phenomenex 7KG-G002-17; Scion/Bruker/Varian CP7769	10241
	0.50 µm	105 m	-60 to 320/350 °C	ea.		10244
	1.00 µm	15 m	-60 to 325/340 °C	ea.	Agilent 122-5013, 19091J-231; Phenomenex 7EG-G002-22; Scion/Bruker/Varian CP8521	10250
	1.00 µm	30 m	-60 to 325/340 °C	ea.	Agilent 122-5033, 19091J-233; Phenomenex 7HG-G002-22; Scion/Bruker/Varian CP8771	10253
	1.00 µm	60 m	-60 to 320/340 °C	ea.	Agilent 122-5063, 19091J-236; Phenomenex 7KG-G002-22; Scion/Bruker/Varian CP8781	10256
0.32 mm	0.10 µm	15 m	-60 to 330/350 °C	ea.	Agilent 123-5011; Phenomenex 7EM-G002-02; Scion/Bruker/Varian CP7731	10206
	0.10 µm	30 m	-60 to 330/350 °C	ea.	Agilent 123-5031, 19091J-313; Phenomenex 7HM-G002-02; Scion/Bruker/Varian CP7741, CP8791	10209
	0.25 µm	15 m	-60 to 330/350 °C	ea.	Agilent 123-5012, 19091J-411; Phenomenex 7EM-G002-11; Scion/Bruker/Varian CP8531	10221
	0.25 µm	30 m	-60 to 330/350 °C	ea.	Agilent 123-5032, 19091J-413; Phenomenex 7HM-G002-11; Scion/Bruker/Varian CP8752	10224
	0.25 µm	60 m	-60 to 330/350 °C	ea.	Agilent 123-5062, 19091J-416; Phenomenex 7KM-G002-11; Scion/Bruker/Varian CP8754	10227
	0.50 µm	15 m	-60 to 330/350 °C	ea.	Agilent 123-501E	10236
	0.50 µm	30 m	-60 to 330/350 °C	ea.	Agilent 123-503E, 19091J-113; Phenomenex 7HM-G002-17; Scion/Bruker/Varian CP7779	10239
	0.50 µm	60 m	-60 to 330/350 °C	ea.	Agilent 123-506E	10242
	1.00 µm	15 m	-60 to 325/350 °C	ea.	Agilent 123-5013, 19091J-211; Phenomenex 7EM-G002-22; Scion/Bruker/Varian CP8541	10251
	1.00 µm	30 m	-60 to 325/350 °C	ea.	Agilent 123-5033, 19091J-213; Phenomenex 7HM-G002-22; Scion/Bruker/Varian CP7761, CP8761	10254
	1.00 µm	60 m	-60 to 320/350 °C	ea.	Agilent 123-5063, 19091J-216; Phenomenex 7KM-G002-22; Scion/Bruker/Varian CP8871	10257
	1.00 µm	60 m	-60 to 330/350 °C	6-pk.		10257-600
	1.00 µm	105 m	-60 to 310/350 °C	ea.		10260
	1.50 µm	15 m	-60 to 310/330 °C	ea.		10266
	1.50 µm	30 m	-60 to 310/330 °C	ea.	Agilent 123-503B	10269
	1.50 µm	60 m	-60 to 310/330 °C	ea.		10272
	1.50 µm	105 m	-60 to 300/320 °C	ea.		10275
	3.00 µm	15 m	-60 to 280/300 °C	ea.		10281
3.00 µm	30 m	-60 to 280/300 °C	ea.		10284	
3.00 µm	60 m	-60 to 280/300 °C	ea.		10287	
3.00 µm	105 m	-60 to 260/300 °C	ea.		10290	

Continued





ID	df	Length	Temp. Limits	qty.	Similar to Part #	cat.#
0.53 mm	0.10 µm	15 m	-60 to 320/340 °C	ea.		10207
	0.10 µm	30 m	-60 to 320/340 °C	ea.		10210
	0.25 µm	15 m	-60 to 320/340 °C	ea.	Agilent 125-501K	10222
	0.25 µm	30 m	-60 to 320/340 °C	ea.	Agilent 125-503K	10225
	0.25 µm	60 m	-60 to 320/340 °C	ea.		10228
	0.50 µm	15 m	-60 to 320/330 °C	ea.	Agilent 125-5017; Phenomenex 7EK-G002-17	10237
	0.50 µm	30 m	-60 to 320/330 °C	ea.	Agilent 125-5037; Phenomenex 7HK-G002-17; Scion/Bruker/Varian CP8716	10240
	0.50 µm	60 m	-60 to 300/330 °C	ea.		10243
	1.00 µm	15 m	-60 to 320/330 °C	ea.	Agilent 125-5011; Scion/Bruker/Varian CP7626	10252
	1.00 µm	30 m	-60 to 320/330 °C	ea.	Agilent 125-5031; Scion/Bruker/Varian CP7636	10255
	1.00 µm	30 m	-60 to 320/330 °C	6-pk.		10255-600
	1.00 µm	60 m	-60 to 310/330 °C	ea.		10258
	1.50 µm	15 m	-60 to 310/330 °C	ea.	Agilent 125-5012, 19095J-321; Phenomenex 7EK-G002-28; Scion/Bruker/Varian CP8678	10267
	1.50 µm	30 m	-60 to 310/330 °C	ea.	Agilent 125-5032, 19095J-323; Phenomenex 7HK-G002-28; Scion/Bruker/Varian CP7631, CP8763	10270
	1.50 µm	60 m	-60 to 300/320 °C	ea.	Agilent 125-5062; Phenomenex 7KK-G002-28; Scion/Bruker/Varian CP8796	10273
	3.00 µm	15 m	-60 to 270/290 °C	ea.		10282
	3.00 µm	30 m	-60 to 270/290 °C	ea.	Agilent 125-5034; Phenomenex 7HK-G002-36	10285
	3.00 µm	30 m	-60 to 270/290 °C	6-pk.		10285-600
	3.00 µm	60 m	-60 to 270/290 °C	ea.		10288
5.00 µm	15 m	-60 to 270/290 °C	ea.	Agilent 125-5015, 19095J-621	10277	
5.00 µm	30 m	-60 to 270/290 °C	ea.	Agilent 125-5035, 19095J-623; Phenomenex 7HK-G002-39; Scion/Bruker/Varian CP8756	10279	
5.00 µm	30 m	-60 to 270/290 °C	6-pk.		10279-600	
5.00 µm	60 m	-60 to 260/290 °C	ea.	Agilent 125-5065	10283	

**Rtx-5 Amine Columns** (fused silica) low-polarity phase; Crossbond 5% diphenyl/95% dimethyl polysiloxane

ID	df	Length	Temp. Limits	qty.	Similar to Part #	cat.#
0.25 mm	0.25 µm	15 m	-60 to 315 °C	ea.		12320
	0.25 µm	30 m	-60 to 315 °C	ea.		12323
	0.50 µm	15 m	-60 to 300/315 °C	ea.	Agilent 122-501E	12335
	0.50 µm	30 m	-60 to 300/315 °C	ea.	Agilent 122-503E; Scion/Bruker/Varian CP7759	12338
	1.00 µm	15 m	-60 to 300/315 °C	ea.	Agilent 122-5013; Scion/Bruker/Varian CP8521	12350
	1.00 µm	30 m	-60 to 300/315 °C	ea.	Agilent 122-5033; Scion/Bruker/Varian CP8771	12353
0.32 mm	1.00 µm	15 m	-60 to 300/315 °C	ea.	Agilent 123-5013; Scion/Bruker/Varian CP8541	12351
	1.00 µm	30 m	-60 to 300/315 °C	ea.	Agilent 123-5033; Scion/Bruker/Varian CP7761, CP8761	12354
	1.50 µm	15 m	-60 to 290/305 °C	ea.		12366
	1.50 µm	30 m	-60 to 290/305 °C	ea.		12369
0.53 mm	1.00 µm	15 m	-60 to 290/305 °C	ea.	Agilent 125-501J	12352
	1.00 µm	30 m	-60 to 290/305 °C	ea.	Agilent 125-503J; Scion/Bruker/Varian CP7636	12355
	3.00 µm	15 m	-60 to 280/295 °C	ea.		12382
	3.00 µm	30 m	-60 to 280/295 °C	ea.	Agilent 125-5034	12385

Note: We recommend using base-deactivated fused silica guard columns and base-deactivated liners with Rtx-5 Amine columns.

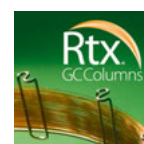
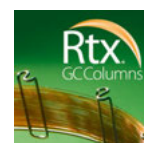
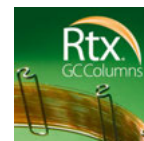
**Rtx-5 DHA Tuning Column** (fused silica) Crossbond 5% diphenyl/95% dimethyl polysiloxane—optimized for hydrocarbon analysis

ID	df	Length	Temp. Limits	qty.	cat.#
0.25 mm	1.00 µm	5 m	-60 to 325/350 °C	ea.	10165

**Rtx-50 Columns** (fused silica) midpolarity phase; Crossbond phenyl methyl polysiloxane

ID	df	Length	Temp. Limits	qty.	Similar to Part #	cat.#
0.18 mm	0.20 µm	10 m	40 to 310/330 °C	ea.		40501
	0.20 µm	20 m	40 to 310/330 °C	ea.		40502
	0.40 µm	20 m	40 to 300/320 °C	ea.		40511

Continued

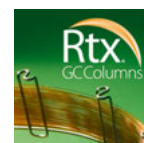




ID	df	Length	Temp. Limits	qty.	Similar to Part #	cat.#
0.25 mm	0.10 µm	30 m	40 to 300/320 °C	ea.		10508
	0.25 µm	15 m	40 to 300/320 °C	ea.	Agilent 122-1712, 19091L-431; Scion/Bruker/Varian CP7820	10520
	0.25 µm	30 m	40 to 300/320 °C	ea.	Agilent 122-1732, 19091L-433; Scion/Bruker/Varian CP7821	10523
	0.25 µm	60 m	40 to 290/320 °C	ea.	Agilent 122-1762, 19091L-436; Scion/Bruker/Varian CP7822	10526
	0.50 µm	15 m	40 to 290/310 °C	ea.	Agilent 122-1713	10535
	0.50 µm	30 m	40 to 290/310 °C	ea.	Agilent 122-1733, 19091L-133; Scion/Bruker/Varian CP7824	10538
	1.00 µm	15 m	40 to 280/300 °C	ea.		10550
	1.00 µm	30 m	40 to 280/300 °C	ea.		10553
	1.00 µm	60 m	40 to 280/300 °C	ea.		10556
	0.32 mm	0.25 µm	15 m	40 to 300/320 °C	ea.	Agilent 123-1712, 19091L-411; Scion/Bruker/Varian CP7830
0.25 µm		30 m	40 to 300/320 °C	ea.	Agilent 123-1732, 19091L-413; Scion/Bruker/Varian CP7831	10524
0.50 µm		15 m	40 to 290/310 °C	ea.	Agilent 123-1713, 19091L-111; Scion/Bruker/Varian CP7833	10536
0.50 µm		30 m	40 to 290/310 °C	ea.	Agilent 123-1733, 19091L-113; Scion/Bruker/Varian CP7834	10539
0.50 µm		60 m	40 to 280/310 °C	ea.	Agilent 123-1763, 19091L-116; Scion/Bruker/Varian CP7835	10542
1.00 µm		15 m	40 to 280/300 °C	ea.		10551
1.00 µm		30 m	40 to 280/300 °C	ea.		10554
1.00 µm		60 m	40 to 280/300 °C	ea.		10557
0.25 µm		15 m	40 to 280/300 °C	ea.	Agilent 125-1711	10522
0.25 µm		30 m	40 to 280/300 °C	ea.		10525
0.53 mm	0.50 µm	15 m	40 to 270/290 °C	ea.	Agilent 125-1717	10537
	0.50 µm	30 m	40 to 270/290 °C	ea.	Agilent 125-1737, 19095L-523	10540
	0.50 µm	60 m	40 to 270/290 °C	ea.		10543
	0.83 µm	30 m	40 to 270/290 °C	ea.		10569
	1.00 µm	15 m	40 to 260/280 °C	ea.	Agilent 125-1712, 19095L-021; Scion/Bruker/Varian CP7870	10552
	1.00 µm	30 m	40 to 260/280 °C	ea.	Agilent 125-1732, 19095L-023; Scion/Bruker/Varian CP7871	10555
	1.00 µm	60 m	40 to 260/280 °C	ea.	Agilent 125-1762; Scion/Bruker/Varian CP7872	10558
	1.50 µm	15 m	40 to 250/270 °C	ea.	Agilent 125-1713	10567
	1.50 µm	30 m	40 to 250/270 °C	ea.	Agilent 125-1733	10570

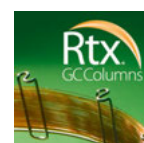
### Rtx-502.2 Columns (fused silica) proprietary Crossbond diphenyl/dimethyl polysiloxane phase

ID	df	Length	Temp. Limits	qty.	Similar to Part #	cat.#
0.18 mm	1.00 µm	20 m	-20 to 250/270 °C	ea.		40914
	1.00 µm	40 m	-20 to 250/270 °C	ea.		40915
	1.40 µm	30 m	-20 to 250/270 °C	ea.		10915
0.25 mm	1.40 µm	60 m	-20 to 250/270 °C	ea.	Agilent 122-1464	10916
	1.40 µm	60 m	-20 to 250/270 °C	6-pk.		10916-600
	1.80 µm	30 m	-20 to 250/270 °C	ea.		10919
0.32 mm	1.80 µm	60 m	-20 to 250/270 °C	ea.	Agilent 123-1464	10920
	1.80 µm	105 m	-20 to 250/270 °C	ea.		10921
0.45 mm	2.55 µm	75 m	-20 to 250/270 °C	ea.	Agilent 124-1474	10986
	3.00 µm	30 m	-20 to 250/270 °C	ea.		10908
0.53 mm	3.00 µm	60 m	-20 to 250/270 °C	ea.		10909
	3.00 µm	105 m	-20 to 250/270 °C	ea.	Agilent 125-14A4	10910



### Rtx-5MS—Low-Bleed GC-MS Columns (fused silica) low-polarity phase; Crossbond diphenyl dimethyl polysiloxane

ID	df	Length	Temp. Limits	qty.	Similar to Part #	cat.#
0.25 mm	0.10 µm	15 m	-60 to 330/350 °C	ea.	Agilent 19091S-331; Scion/Bruker/Varian CP5867	12605
	0.10 µm	30 m	-60 to 330/350 °C	ea.	Agilent 19091S-333; Scion/Bruker/Varian CP5870	12608
	0.10 µm	60 m	-60 to 330/350 °C	ea.	Agilent 19091S-336; Scion/Bruker/Varian CP5872	12611
	0.25 µm	15 m	-60 to 330/350 °C	ea.	Agilent 19091S-431; Scion/Bruker/Varian CP5868	12620
	0.25 µm	15 m	-60 to 330/350 °C	6-pk.		12620-600
	0.25 µm	30 m	-60 to 330/350 °C	ea.	Agilent 19091S-433; Scion/Bruker/Varian CP5860	12623
	0.25 µm	30 m	-60 to 330/350 °C	6-pk.		12623-600
	0.25 µm	60 m	-60 to 330/350 °C	ea.	Agilent 19091S-436; Scion/Bruker/Varian CP5861	12626
	0.50 µm	15 m	-60 to 330/350 °C	ea.		12635
	0.50 µm	30 m	-60 to 330/350 °C	ea.	Agilent 19091S-133; Scion/Bruker/Varian CP5871	12638
	0.50 µm	60 m	-60 to 320/350 °C	ea.		12641
	1.00 µm	15 m	-60 to 325/350 °C	ea.	Agilent 19091S-231; Scion/Bruker/Varian CP5869	12650
	1.00 µm	30 m	-60 to 325/350 °C	ea.	Agilent 19091S-233; Scion/Bruker/Varian CP5862	12653



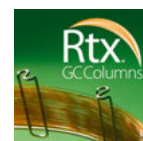
Continued



ID	df	Length	Temp. Limits	qty.	Similar to Part #	cat.#
0.32 mm	0.10 µm	15 m	-60 to 330/350 °C	ea.	Agilent 19091S-311; Scion/Bruker/Varian CP5873	12606
	0.10 µm	30 m	-60 to 330/350 °C	ea.	Agilent 19091S-313; Scion/Bruker/Varian CP5877	12609
	0.10 µm	60 m	-60 to 330/350 °C	ea.		12612
	0.25 µm	15 m	-60 to 330/350 °C	ea.	Agilent 19091S-411	12621
	0.25 µm	30 m	-60 to 330/350 °C	ea.	Agilent 19091S-413; Scion/Bruker/Varian CP5863	12624
	0.25 µm	60 m	-60 to 330/350 °C	ea.	Agilent 19091S-416; Scion/Bruker/Varian CP5864	12627
	0.50 µm	30 m	-60 to 330/350 °C	ea.	Agilent 19091S-113; Scion/Bruker/Varian CP5880	12639
	0.50 µm	60 m	-60 to 330/350 °C	ea.		12642
	1.00 µm	15 m	-60 to 325/350 °C	ea.		12651
	1.00 µm	30 m	-60 to 325/350 °C	ea.	Agilent 19091S-213; Scion/Bruker/Varian CP5865	12654
0.53 mm	0.50 µm	15 m	-60 to 320/340 °C	ea.		12637
	0.50 µm	30 m	-60 to 320/340 °C	ea.		12640
	1.00 µm	15 m	-60 to 320/340 °C	ea.		12652
	1.00 µm	30 m	-60 to 320/340 °C	ea.		12655
	1.50 µm	15 m	-60 to 310/330 °C	ea.		12667
	1.50 µm	30 m	-60 to 310/330 °C	ea.		12670

**Rtx-624 Columns** (fused silica) low- to midpolarity phase

ID	df	Length	Temp. Limits	qty.	Similar to Part #	cat.#
0.18 mm	1.00 µm	20 m	-20 to 240 °C	ea.	Agilent 121-1324	40924
	1.00 µm	40 m	-20 to 240 °C	ea.		40925
0.25 mm	1.40 µm	30 m	-20 to 240 °C	ea.	Agilent 122-1334; Scion/Bruker/Varian CP7412	10968
	1.40 µm	60 m	-20 to 240 °C	ea.	Agilent 122-1364	10969
0.32 mm	1.80 µm	30 m	-20 to 240 °C	ea.	Agilent 123-1334; Scion/Bruker/Varian CP7414	10970
	1.80 µm	60 m	-20 to 240 °C	ea.	Agilent 123-1364; Scion/Bruker/Varian CP7413, CP7415	10972
	3.00 µm	30 m	-20 to 240 °C	ea.	Agilent 125-1334; Scion/Bruker/Varian CP7416	10971
0.53 mm	3.00 µm	30 m	-20 to 240 °C	6-pk.		10971-600
	3.00 µm	60 m	-20 to 240 °C	ea.	Agilent 125-1364	10973
	3.00 µm	75 m	-20 to 240 °C	ea.	Agilent 125-1374; Scion/Bruker/Varian CP7417	10974
	3.00 µm	105 m	-20 to 240 °C	ea.		10975

**Rtx-65 Columns** (fused silica) mid- to high-polarity phase; Crossbond diphenyl dimethyl polysiloxane

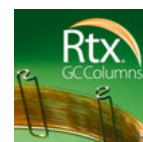
ID	df	Length	Temp. Limits	qty.	cat.#
0.25 mm	0.25 µm	15 m	50 to 300 °C	ea.	17020
	0.25 µm	30 m	50 to 300 °C	ea.	17023
	0.50 µm	30 m	50 to 280/300 °C	ea.	17038
	1.00 µm	30 m	50 to 260/280 °C	ea.	17053
0.32 mm	0.25 µm	30 m	50 to 300 °C	ea.	17024
	0.50 µm	30 m	50 to 280/300 °C	ea.	17039
	1.00 µm	30 m	50 to 260/280 °C	ea.	17054
0.53 mm	1.00 µm	30 m	50 to 250/270 °C	ea.	17055

**Rtx-65TG Columns** (fused silica) high-polarity phase; Crossbond diphenyl dimethyl polysiloxane

ID	df	Length	Temp. Limits	qty.	cat.#
0.25 mm	0.10 µm	15 m	40 to 370 °C	ea.	17005
	0.10 µm	30 m	40 to 370 °C	ea.	17008
0.32 mm	0.10 µm	15 m	40 to 370 °C	ea.	17006
	0.10 µm	30 m	40 to 370 °C	ea.	17009
0.53 mm	0.10 µm	30 m	40 to 370 °C	ea.	17010

**Rtx-BAC Plus 1 Columns** (fused silica)

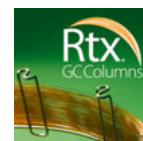
ID	df	Length	Temp. Limits	qty.	cat.#
0.32 mm	1.80 µm	30 m	-20 to 240/260 °C	ea.	18004
0.53 mm	3.00 µm	30 m	-20 to 240/260 °C	ea.	18005





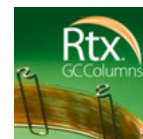
**Rtx-BAC Plus 2 Columns** (fused silica)

ID	df	Length	Temp. Limits	qty.	cat.#
0.32 mm	0.6 µm	30 m	-20 to 240/260 °C	ea.	18006
0.53 mm	1.0 µm	30 m	-20 to 240/260 °C	ea.	18007



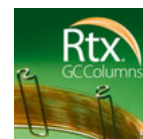
**Rtx-BAC1 Columns** (fused silica) proprietary Crossbond phase

ID	df	Length	Temp. Limits	qty.	Similar to Part #	cat.#
0.32 mm	1.80 µm	30 m	-20 to 240/260 °C	ea.	Agilent 123-9134B	18003
0.53 mm	3.00 µm	30 m	-20 to 240/260 °C	ea.	Agilent 122-1313; Scion/Bruker/Varian CP8603	18001



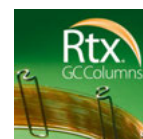
**Rtx-BAC2 Columns** (fused silica) proprietary Crossbond phase

ID	df	Length	Temp. Limits	qty.	Similar to Part #	cat.#
0.32 mm	1.20 µm	30 m	-20 to 240/260 °C	ea.	Agilent 123-9134	18002
0.53 mm	2.00 µm	30 m	-20 to 240/260 °C	ea.	Agilent 125-9234	18000



**Rtx-Biodiesel TG Columns** (fused silica)

ID	df	Length	Temp. Limits	Modification	qty.	cat.#
0.32 mm	0.10 µm	10 m	to 330/380 °C		ea.	10292
	0.10 µm	10 m	to 330/380 °C	with 2 m x 0.53 mm ID Retention Gap (connected with SilTite µ-Union connector)	ea.	10291
	0.10 µm	15 m	to 330/380 °C		ea.	10294
	0.10 µm	15 m	to 330/380 °C	with 2 m x 0.53 mm ID Retention Gap (connected with SilTite µ-Union connector)	ea.	10293



**Rtx-CLPesticides Column Kit, 0.25 mm ID** proprietary Crossbond phases

Includes	qty.	cat.#
Rtx-CLPesticides Column (cat.# 11123); Rtx-CLPesticides2 Column (cat.# 11323); Deactivated Universal Angled "Y" Press-Tight Connector (cat.# 20403-261); and Siltek Guard Column (cat.# 10026)	kit	11199



11199

**Rtx-CLPesticides Column Kit, 0.32 mm ID** proprietary Crossbond phases

Includes	qty.	cat.#
<b>Rtx-CLPesticides Kit (0.32 mm ID, 0.32 µm)</b> Rtx-CLPesticides Column (cat.# 11141); Rtx-CLPesticides2 Column (cat.# 11324); Deactivated Universal Angled "Y" Press-Tight Connector (cat.# 20403-261); and Siltek Guard Column (cat.# 10027)	kit	11196



11196

Includes	qty.	cat.#
<b>Rtx-CLPesticides Kit (0.32 mm ID, 0.50 µm)</b> Rtx-CLPesticides Column (cat.# 11139); Rtx-CLPesticides2 Column (cat.# 11324); Deactivated Universal Angled "Y" Press-Tight Connector (cat.# 20403-261); and Siltek Guard Column (cat.# 10027)	kit	11198

**Rtx-CLPesticides Column Kit, 0.53 mm ID** proprietary Crossbond phases

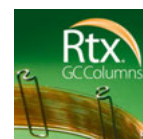
Includes	qty.	cat.#
Rtx-CLPesticides Column (cat.# 11140); Rtx-CLPesticides2 Column (cat.# 11340); Deactivated Universal Angled "Y" Press-Tight Connector (cat.# 20403-261); and IP Deactivated Guard Column (cat.# 10045)	kit	11197



11197

**Rtx-CLPesticides Columns** (fused silica) proprietary Crossbond phase

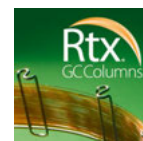
ID	df	Length	Temp. Limits	qty.	Similar to Part #	cat.#
0.10 mm	0.10 µm	1.1 m (±3 cm)	-60 to 320/340 °C	ea.		15103
0.18 mm	0.18 µm	20 m	-60 to 320/340 °C	ea.	Agilent 122-3832	42102
	0.25 µm	15 m	-60 to 320/340 °C	ea.	Agilent 122-3832	11120
0.25 mm	0.25 µm	30 m	-60 to 320/340 °C	ea.	Agilent 122-3832	11123
	0.25 µm	30 m	-60 to 320/340 °C	6-pk.		11123-600
	0.25 µm	60 m	-60 to 320/340 °C	ea.		11126
	0.32 µm	30 m	-60 to 320/340 °C	ea.		11141
0.32 mm	0.50 µm	15 m	-60 to 320/340 °C	ea.	Agilent 123-3832	11136
	0.50 µm	30 m	-60 to 320/340 °C	ea.	Agilent 123-3832	11139
	0.50 µm	30 m	-60 to 320/340 °C	6-pk.		11139-600
0.53 mm	0.50 µm	30 m	-60 to 300/320 °C	ea.	Agilent 125-3837	11140





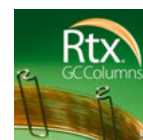
**Rtx-CLPesticides2 Columns** (fused silica) proprietary Crossbond phase

ID	df	Length	Temp. Limits	qty.	Similar to Part #	cat.#
0.18 mm	0.14 µm	10 m	-60 to 320/330 °C	ea.	Agilent 123-1236; Scion/Bruker/Varian CP7936	42301
	0.14 µm	20 m	-60 to 310/330 °C	ea.	Agilent 123-1236; Scion/Bruker/Varian CP7936	42302
0.25 mm	0.20 µm	30 m	-60 to 320/340 °C	ea.	Agilent 123-1236; Scion/Bruker/Varian CP7936	11323
	0.20 µm	60 m	-60 to 320/340 °C	ea.		11326
0.32 mm	0.25 µm	15 m	-60 to 320/340 °C	ea.	Agilent 123-1236; Scion/Bruker/Varian CP7936	11321
	0.25 µm	30 m	-60 to 320/340 °C	ea.	Agilent 123-1236; Scion/Bruker/Varian CP7936	11324
	0.25 µm	30 m	-60 to 320/340 °C	6-pk.		11324-600
	0.50 µm	30 m	-60 to 320/340 °C	ea.		11325
0.53 mm	0.42 µm	30 m	-60 to 300/320 °C	ea.	Agilent 123-1236; Scion/Bruker/Varian CP7936	11340



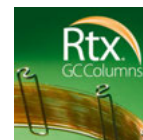
**Rtx-DHA Columns** (fused silica) Crossbond 100% dimethyl polysiloxane—optimized for hydrocarbon analysis

ID	df	Length	Temp. Limits	qty.	cat.#
<b>Rtx-DHA-100</b>					
0.25 mm	0.50 µm	100 m	-60 to 300/340 °C	ea.	10148
<b>Rtx-DHA-150</b>					
0.25 mm	1.00 µm	150 m	-60 to 280/340 °C	ea.	10149
<b>Rtx-DHA-50</b>					
0.20 mm	0.50 µm	50 m	-60 to 300/340 °C	ea.	10147



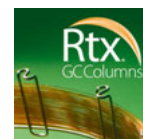
**Rtx-Dioxin2 Columns** (fused silica) proprietary Crossbond phase

ID	df	Length	Temp. Limits	qty.	cat.#
0.18 mm	0.18 µm	40 m	20 to 320/340 °C	ea.	10759
0.25 mm	0.25 µm	60 m	20 to 320/340 °C	ea.	10758



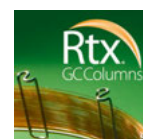
**Rtx-Mineral Oil Columns** (fused silica)

ID	df	Length	Temp. Limits	qty.	cat.#
0.32 mm	0.10 µm	15 m	-60 to 380/400 °C	ea.	18079
	0.15 µm	15 m	-60 to 380/400 °C	ea.	18074
	0.30 µm	15 m	-60 to 380/400 °C	ea.	18075



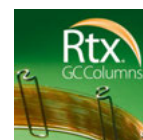
**Rtx-OPPesticides Columns** (fused silica) proprietary Crossbond phase

ID	df	Length	Temp. Limits	qty.	Similar to Part #	cat.#
0.32 mm	0.50 µm	30 m	-20 to 310/330 °C	ea.	Agilent 122-5532; Scion/Bruker/Varian CP5860	11239
0.53 mm	0.83 µm	30 m	-20 to 310/330 °C	ea.		11240
0.25 mm	0.25 µm	30 m	-20 to 320/340 °C	ea.		11223



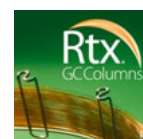
**Rtx-OPPesticides2 Columns** (fused silica) proprietary Crossbond phase

ID	df	Length	Temp. Limits	qty.	cat.#
0.18 mm	0.20 µm	20 m	-20 to 310/330 °C	ea.	11244
0.25 mm	0.25 µm	30 m	-20 to 310/330 °C	ea.	11243
0.32 mm	0.32 µm	30 m	-20 to 310/330 °C	ea.	11241
0.53 mm	0.50 µm	30 m	-20 to 300/330 °C	ea.	11242



**Rtx-PCB Columns** (fused silica) proprietary Crossbond phase

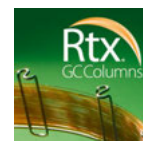
ID	df	Length	Temp. Limits	qty.	cat.#
0.18 mm	0.18 µm	20 m	30 to 320 °C	ea.	41302
	0.18 µm	40 m	30 to 320/340 °C	ea.	41303
	0.18 µm	60 m	30 to 320/340 °C	ea.	41304
0.25 mm	0.25 µm	30 m	30 to 320/340 °C	ea.	13223
	0.25 µm	60 m	30 to 320/340 °C	ea.	13226
0.32 mm	0.50 µm	30 m	30 to 320/340 °C	ea.	13239





**Rtx-VMS Columns** (fused silica) proprietary Crossbond phase

ID	df	Length	Temp. Limits	qty.	Similar to Part #	cat.#
0.18 mm	1.00 µm	20 m	-40 to 240/260 °C	ea.	Agilent 121-1524	49914
	1.00 µm	40 m	-40 to 240/260 °C	ea.	Agilent 121-1524	49915
0.25 mm	1.40 µm	30 m	-40 to 240/260 °C	ea.	Agilent 122-1534	19915
	1.40 µm	60 m	-40 to 240/260 °C	ea.	Agilent 122-1564	19916
0.32 mm	1.80 µm	30 m	-40 to 240/260 °C	ea.	Agilent 123-1534	19919
	1.80 µm	60 m	-40 to 240/260 °C	ea.	Agilent 123-1564	19920
0.45 mm	2.55 µm	30 m	-40 to 240/260 °C	ea.	Agilent 124-1534	19908
	2.55 µm	60 m	-40 to 240/260 °C	ea.	Agilent 124-1574	19909
0.53 mm	3.00 µm	30 m	-40 to 240/260 °C	ea.	Agilent 124-1534	19985
	3.00 µm	60 m	-40 to 240/260 °C	ea.	Agilent 124-1574	19988
	3.00 µm	75 m	-40 to 240/260 °C	ea.	Agilent 124-1574	19974



**Rtx-Volatile Amine Columns** (fused silica)

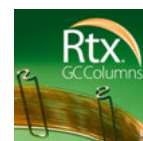
ID	df	Length	Temp. Limits	qty.	cat.#
0.32 mm	5 µm	15 m	-60 to 270/290 °C	ea.	18076
	5 µm	30 m	-60 to 270/290 °C	ea.	18077
	5 µm	60 m	-60 to 270/290 °C	ea.	18078

Note: We recommend using base-deactivated fused silica guard columns and Topaz liners with Rtx-Volatile Amine columns.



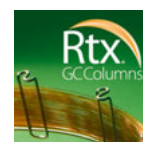
**Rtx-Volatiles Columns** (fused silica) proprietary Crossbond diphenyl/dimethyl polysiloxane phase

ID	df	Length	Temp. Limits	qty.	Similar to Part #	cat.#
0.25 mm	1.00 µm	30 m	-20 to 270/280 °C	ea.	Agilent 122-1534	10900
	1.00 µm	60 m	-20 to 270/280 °C	ea.	Agilent 122-1564	10903
0.32 mm	1.50 µm	30 m	-20 to 270/280 °C	ea.	Agilent 123-1534	10901
	1.50 µm	60 m	-20 to 270/280 °C	ea.	Agilent 123-1564	10904
0.53 mm	2.00 µm	30 m	-20 to 270/280 °C	ea.	Agilent 124-1534	10902
	2.00 µm	60 m	-20 to 270/280 °C	ea.	Agilent 124-1574	10905
	2.00 µm	105 m	-20 to 270/280 °C	ea.	Agilent 124-1574	10906



**Rtx-VRX Columns** (fused silica) proprietary Crossbond phase

ID	df	Length	Temp. Limits	qty.	Similar to Part #	cat.#
0.18 mm	1.00 µm	20 m	-40 to 240/260 °C	ea.	Agilent 121-1524	49314
	1.00 µm	40 m	-40 to 240/260 °C	ea.	Agilent 121-1524	49315
0.25 mm	1.40 µm	30 m	-40 to 240/260 °C	ea.	Agilent 122-1534	19315
	1.40 µm	60 m	-40 to 240/260 °C	ea.	Agilent 122-1564	19316
0.32 mm	1.80 µm	30 m	-40 to 240/260 °C	ea.	Agilent 123-1534	19319
	1.80 µm	60 m	-40 to 240/260 °C	ea.	Agilent 123-1564	19320
0.45 mm	2.55 µm	30 m	-40 to 240/260 °C	ea.	Agilent 124-1534	19308
	2.55 µm	75 m	-40 to 240/260 °C	ea.	Agilent 124-1574	19309
0.53 mm	3.00 µm	30 m	-40 to 240/260 °C	ea.	Agilent 124-1534	19385
	3.00 µm	60 m	-40 to 240/260 °C	ea.	Agilent 124-1574	19388



**Rtx-Wax Columns** (fused silica) polar phase; Crossbond polyethylene glycol

ID	df	Length	Temp. Limits	qty.	Similar to Part #	cat.#
0.10 mm	0.10 µm	20 m	20 to 250 °C	ea.	Agilent 127-7022	41602
	0.20 µm	10 m	20 to 250 °C	ea.	Agilent 127-7013; Scion/Bruker/Varian CP7335	41603
	0.10 µm	30 m	20 to 250 °C	ea.		12408
0.25 mm	0.25 µm	15 m	20 to 250 °C	ea.	Agilent 122-7012; Scion/Bruker/Varian CP8513	12420
	0.25 µm	30 m	20 to 250 °C	ea.	Agilent 122-7032; Scion/Bruker/Varian CP8713, CP97713	12423
	0.25 µm	60 m	20 to 250 °C	ea.	Agilent 122-7062; Scion/Bruker/Varian CP8723	12426
	0.50 µm	15 m	20 to 250 °C	ea.	Agilent 122-7013; Scion/Bruker/Varian CP8523	12435
0.50 mm	0.50 µm	30 m	20 to 250 °C	ea.	Agilent 122-7033; Scion/Bruker/Varian CP8746	12438
	0.50 µm	60 m	20 to 250 °C	ea.	Agilent 122-7063; Scion/Bruker/Varian CP8120, CP8748	12441



Continued





ID	df	Length	Temp. Limits	qty.	Similar to Part #	cat.#
0.32 mm	0.25 µm	15 m	20 to 250 °C	ea.		12421
	0.25 µm	30 m	20 to 250 °C	ea.	Agilent 123-7032; Scion/Bruker/Varian CP8843	12424
	0.25 µm	60 m	20 to 250 °C	ea.	Agilent 123-7063; Scion/Bruker/Varian CP8773	12427
	0.50 µm	15 m	20 to 250 °C	ea.	Agilent 123-7013; Scion/Bruker/Varian CP8553	12436
	0.50 µm	30 m	20 to 250 °C	ea.	Agilent 123-7033; Scion/Bruker/Varian CP8763	12439
	0.50 µm	60 m	20 to 250 °C	ea.	Agilent 123-7063; Scion/Bruker/Varian CP8773	12442
	1.00 µm	15 m	20 to 240/250 °C	ea.		12451
	1.00 µm	30 m	20 to 240/250 °C	ea.		12454
	1.00 µm	60 m	20 to 240/250 °C	ea.		12457
0.53 mm	0.25 µm	30 m	20 to 250 °C	ea.	Agilent 125-7031	12425
	0.50 µm	30 m	20 to 250 °C	ea.	Agilent 125-7037	12440
	1.00 µm	15 m	20 to 240/250 °C	ea.	Agilent 125-7012; Scion/Bruker/Varian CP8718	12452
	1.00 µm	30 m	20 to 240/250 °C	ea.	Agilent 125-7032; Scion/Bruker/Varian CP8738, CP97638	12455
	1.00 µm	60 m	20 to 240/250 °C	ea.	Agilent 125-7062; Scion/Bruker/Varian CP8798	12458

**Rxi Guard/Retention Gap Columns (fused silica)**

ID	Length	OD	qty.	Similar to Part #	cat.#
0.25 mm	5 m	0.37 ± 0.04 mm	ea.	Agilent 160-2255-5; Phenomenex 7AG-G000-00-GHO	10029
	5 m	0.37 ± 0.04 mm	6-pk.		10029-600
	10 m	0.37 ± 0.04 mm	ea.	Phenomenex 7CG-G000-00-GHO	10059
	10 m	0.37 ± 0.04 mm	6-pk.		10059-600
0.32 mm	5 m	0.45 ± 0.04 mm	ea.	Agilent 160-2325-5; Phenomenex 7AM-G000-00-GHO	10039
	5 m	0.45 ± 0.04 mm	6-pk.		10039-600
	10 m	0.45 ± 0.04 mm	ea.	Agilent 160-2325-10; Phenomenex 7CM-G000-00-GHO	10064
	10 m	0.45 ± 0.04 mm	6-pk.		10064-600
0.53 mm	5 m	0.69 ± 0.05 mm	ea.	Agilent 160-2535-5; Phenomenex 7AK-G000-00-GHO	10054
	5 m	0.69 ± 0.05 mm	6-pk.		10054-600
	10 m	0.69 ± 0.05 mm	ea.	Agilent 160-2535-10; Phenomenex 7CK-G000-00-GHO	10073
	10 m	0.69 ± 0.05 mm	6-pk.		10073-600



**Rxi-1301SII MS Columns (fused silica) midpolarity Crossbond phase**

ID	df	Length	Temp. Limits	qty.	cat.#
0.25 mm	0.25 µm	30 m	-60 to 320 °C	ea.	16094
	0.25 µm	60 m	-60 to 320 °C	ea.	16096
	1.00 µm	30 m	-60 to 320 °C	ea.	16095
0.32 mm	1.00 µm	60 m	-60 to 320 °C	ea.	16097
	0.25 µm	30 m	-60 to 320 °C	ea.	16098
	1.00 µm	30 m	-60 to 320 °C	ea.	16099
	1.00 µm	60 m	-60 to 320 °C	ea.	16100
	1.50 µm	30 m	-60 to 320 °C	ea.	16104
	1.50 µm	60 m	-60 to 320 °C	ea.	16105
0.53 mm	1.00 µm	15 m	-60 to 320 °C	ea.	16101
	1.00 µm	30 m	-60 to 320 °C	ea.	16102
	3.00 µm	30 m	-60 to 280/300 °C	ea.	16106
	3.00 µm	60 m	-60 to 280/300 °C	ea.	16107



**Rxi-17 Columns (fused silica) midpolarity phase; Crossbond diphenyl dimethyl polysiloxane**

ID	df	Length	Temp. Limits	qty.	Similar to Part #	cat.#
0.10 mm	0.10 µm	1.1 m (±3 cm)	40 to 320/320 °C	ea.		15104
	0.10 µm	10 m	40 to 280/320 °C	ea.	Agilent 127-1712	13501
0.18 mm	0.18 µm	20 m	40 to 280/320 °C	ea.	Agilent 121-1722	13502
	0.25 µm	15 m	40 to 280/320 °C	ea.	Agilent 122-1712	13520
0.25 mm	0.25 µm	30 m	40 to 280/320 °C	ea.	Agilent 122-1732	13523
	0.50 µm	30 m	40 to 280/320 °C	ea.	Agilent 122-1733	13538
	1.00 µm	30 m	40 to 280/320 °C	ea.		13553
0.32 mm	0.25 µm	30 m	40 to 280/320 °C	ea.	Agilent 123-1732	13524
	0.50 µm	30 m	40 to 280/320 °C	ea.	Agilent 123-1733	13539
	1.00 µm	30 m	40 to 280/320 °C	ea.		13554



Continued



ID	df	Length	Temp. Limits	qty.	Similar to Part #	cat.#
0.53 mm	0.25 µm	30 m	40 to 280/320 °C	ea.	Agilent 125-1731	13525
	0.50 µm	30 m	40 to 280/320 °C	ea.	Agilent 125-1737	13540
	1.00 µm	15 m	40 to 280/320 °C	ea.	Agilent 125-1712	13552
	1.00 µm	30 m	40 to 280/320 °C	ea.	Agilent 125-1732	13555
	1.50 µm	30 m	40 to 280/320 °C	ea.	Agilent 125-1733	13570

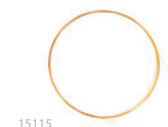
**Rxi-17Sil MS Columns** (fused silica) midpolarity Crossbond phase

ID	df	Length	Temp. Limits	qty.	Similar to Part #	cat.#
0.10 mm	0.10 µm	10 m	40 to 340/360 °C	ea.		14101
0.15 mm	0.15 µm	10 m	40 to 340/360 °C	ea.		43820
	0.15 µm	20 m	40 to 340/360 °C	ea.		43821
0.18 mm	0.18 µm	20 m	40 to 340/360 °C	ea.	Agilent 121-4722	14102
	0.36 µm	20 m	40 to 340/360 °C	ea.		14111
0.25 mm	0.25 µm	15 m	40 to 340/360 °C	ea.	Agilent 122-4712; Phenomenex 7EG-G004-11	14120
	0.25 µm	30 m	40 to 340/360 °C	ea.	Agilent 122-4732; Phenomenex 7HG-G004-11	14123
	0.25 µm	60 m	40 to 340/360 °C	ea.	Agilent 122-4762; Phenomenex 7KG-G004-11	14126
0.32 mm	0.25 µm	15 m	40 to 340/360 °C	ea.	Agilent 123-4712; Phenomenex 7EM-G004-11	14121
	0.25 µm	30 m	40 to 340/360 °C	ea.	Agilent 123-4732; Phenomenex 7HM-G004-11	14124



**Rxi-17Sil MS Secondary Columns for GCxGC** (fused silica) midpolarity Crossbond phase

ID	df	Length	Temp. Limits	qty.	cat.#
0.15 mm	0.15 µm	2 m	40 to 340/360 °C	ea.	15110
0.18 mm	0.18 µm	2 m	40 to 340/360 °C	ea.	15116
0.25 mm	0.25 µm	2 m	40 to 340/360 °C	ea.	15123



**Rxi-1HT Columns** (fused silica) nonpolar phase; dimethyl polysiloxane

ID	df	Length	Temp. Limits	qty.	Similar to Part #	cat.#
0.25 mm	0.10 µm	15 m	-60 to 400 °C	ea.	Agilent 123-1111	13950
	0.10 µm	30 m	-60 to 400 °C	ea.		13951
	0.25 µm	30 m	-60 to 400 °C	ea.		13952
0.32 mm	0.10 µm	15 m	-60 to 400 °C	ea.		13953
	0.10 µm	30 m	-60 to 400 °C	ea.		13954
	0.25 µm	30 m	-60 to 400 °C	ea.		13955



**Rxi-1ms Columns** (fused silica) nonpolar phase; Crossbond dimethyl polysiloxane

ID	df	Length	Temp. Limits	qty.	Similar to Part #	cat.#
0.10 mm	0.10 µm	1.1 m (±3 cm)	-60 to 330/350 °C	ea.		15106
	0.10 µm	10 m	-60 to 330/350 °C	ea.	Agilent 127-0112; Phenomenex 7CB-G011-02	13301
	0.15 µm	10 m	-60 to 330/350 °C	ea.		43800
0.15 mm	0.15 µm	20 m	-60 to 330/350 °C	ea.		43801
	2.0 µm	20 m	-60 to 330/350 °C	ea.		43802
0.18 mm	0.18 µm	20 m	-60 to 330/350 °C	ea.	Agilent 121-0122, 19091s-677; Phenomenex 7FD-G011-08	13302
	0.36 µm	20 m	-60 to 330/350 °C	ea.		13311
0.20 mm	0.33 µm	12 m	-60 to 330/350 °C	ea.	Agilent 128-0112; Phenomenex 7DE-G011-14	13397
	0.33 µm	12 m	-60 to 330/350 °C	6-pk.		13397-600
0.25 mm	0.33 µm	25 m	-60 to 330/350 °C	ea.	Agilent 128-0122, 19091s-602; Phenomenex 7GE-G011-14	13398
	0.33 µm	50 m	-60 to 330/350 °C	ea.		13399
	0.25 µm	15 m	-60 to 330/350 °C	ea.	Agilent 122-0112, 19091s-931; Phenomenex 7EG-G011-11	13320
	0.25 µm	15 m	-60 to 330/350 °C	6-pk.		13320-600
	0.25 µm	30 m	-60 to 330/350 °C	ea.	Agilent 122-0132, 19091s-933; Phenomenex 7HG-G011-11	13323
	0.25 µm	60 m	-60 to 330/350 °C	ea.	Agilent 122-0162, 19091s-936; Phenomenex 7KG-G011-11	13326
	0.50 µm	15 m	-60 to 330/350 °C	ea.		13335
0.25 mm	0.50 µm	30 m	-60 to 330/350 °C	ea.	Agilent 19091s-633; Phenomenex 7HG-G011-17	13338
	0.50 µm	60 m	-60 to 330/350 °C	ea.		13341
	1.00 µm	15 m	-60 to 330/350 °C	ea.		13350
	1.00 µm	30 m	-60 to 330/350 °C	ea.	Agilent 19091s-733; Phenomenex 7HG-G011-22	13353
	1.00 µm	60 m	-60 to 330/350 °C	ea.	Phenomenex 7KG-G011-22	13356



Continued



ID	df	Length	Temp. Limits	qty.	Similar to Part #	cat.#
0.32 mm	0.25 µm	15 m	-60 to 330/350 °C	ea.	Agilent 123-0112, 19091s-911; Phenomenex 7EM-G011-11	13321
	0.25 µm	30 m	-60 to 330/350 °C	ea.	Agilent 123-0132, 19091s-913; Phenomenex 7HM-G011-11	13324
	0.25 µm	60 m	-60 to 330/350 °C	ea.	Agilent 123-0162, 19091s-916	13327
	0.50 µm	15 m	-60 to 330/350 °C	ea.		13336
	0.50 µm	30 m	-60 to 330/350 °C	ea.		13339
	0.50 µm	60 m	-60 to 330/350 °C	ea.		13342
	1.00 µm	30 m	-60 to 330/350 °C	ea.	Agilent 19091s-713; Phenomenex 7HM-G011-22	13354
	1.00 µm	60 m	-60 to 330/350 °C	ea.	Phenomenex 7KM-G011-22	13357
	4.00 µm	30 m	-60 to 330/350 °C	ea.		13396
	0.50 µm	15 m	-60 to 330/350 °C	ea.		13337
0.53 mm	0.50 µm	30 m	-60 to 330/350 °C	ea.		13340
	1.00 µm	15 m	-60 to 330/350 °C	ea.		13352
	1.00 µm	30 m	-60 to 330/350 °C	ea.		13355
	1.50 µm	15 m	-60 to 330/350 °C	ea.		13367
	1.50 µm	30 m	-60 to 330/350 °C	ea.		13370
	1.50 µm	60 m	-60 to 330/350 °C	ea.		13373

**Rxi-1ms Secondary Columns for GCxGC** (fused silica) nonpolar phase; Crossbond dimethyl polysiloxane

ID	df	Length	Temp. Limits	qty.	cat.#
0.15 mm	0.15 µm	2 m	-60 to 330/350 °C	ea.	15114
0.18 mm	0.18 µm	2 m	-60 to 330/350 °C	ea.	15120
0.25 mm	0.25 µm	2 m	-60 to 330/350 °C	ea.	15127



15115

**Rxi-35Sil MS Columns** (fused silica) midpolarity Crossbond phase

ID	df	Length	Temp. Limits	qty.	Similar to Part #	cat.#
0.25 mm	0.25 µm	15 m	50 to 340/360 °C	ea.		13820
	0.25 µm	30 m	50 to 340/360 °C	ea.	Agilent 122-3832; Phenomenex 7HG-G003-11	13823
	0.50 µm	15 m	50 to 340/360 °C	ea.		13835
	0.50 µm	30 m	50 to 340/360 °C	ea.		13838
	1.00 µm	30 m	50 to 340/340 °C	ea.		13853
0.32 mm	0.25 µm	15 m	50 to 340/360 °C	ea.		13821
	0.25 µm	30 m	50 to 340/360 °C	ea.	Agilent 123-3832; Phenomenex 7HM-G003-11	13824
	0.50 µm	15 m	50 to 340/360 °C	ea.		13836
	0.50 µm	30 m	50 to 340/360 °C	ea.		13839
	1.00 µm	30 m	50 to 340/340 °C	ea.		13854
0.53 mm	0.50 µm	15 m	50 to 340/360 °C	ea.		13837
	0.50 µm	30 m	50 to 340/340 °C	ea.	Agilent 125-3837; Phenomenex 7HK-G003-17	13840
	1.00 µm	30 m	50 to 325/340 °C	ea.		13855
	3.00 µm	30 m	50 to 280/300 °C	ea.		13859



**Rxi-5HT Columns** (fused silica) low-polarity phase; diphenyl dimethyl polysiloxane

ID	df	Length	Temp. Limits	qty.	Similar to Part #	cat.#
0.25 mm	0.10 µm	15 m	-60 to 400 °C	ea.	Agilent 122-5711; Phenomenex 7EG-G015-02	13905
	0.10 µm	30 m	-60 to 400 °C	ea.	Agilent 122-5731; Phenomenex 7HG015-02	13908
	0.25 µm	15 m	-60 to 400 °C	ea.		13911
	0.25 µm	30 m	-60 to 400 °C	ea.	Phenomenex 7HG-G015-11	13923
0.32 mm	0.10 µm	15 m	-60 to 400 °C	ea.	Agilent 123-5711; Phenomenex 7EM-G015-02	13906
	0.10 µm	30 m	-60 to 400 °C	ea.	Agilent 123-5731; Phenomenex 7HM-G015-02	13909
	0.25 µm	30 m	-60 to 400 °C	ea.	Phenomenex 7HM-G015-11	13924
0.53 mm	0.15 µm	30 m	-60 to 380/400 °C	ea.	Phenomenex 7HK-G015-05	13910



**Rxi-5ms Columns** (fused silica) low-polarity phase; Crossbond diphenyl dimethyl polysiloxane

ID	df	Length	Temp. Limits	qty.	Similar to Part #	cat.#
0.10 mm	0.10 µm	10 m	-60 to 330/350 °C	ea.		13401
	0.18 µm	20 m	-60 to 330/350 °C	ea.	Agilent 19091s-577	13402
0.18 mm	0.30 µm	20 m	-60 to 330/350 °C	ea.		13409
	0.36 µm	20 m	-60 to 330/350 °C	ea.		13411



Continued



ID	df	Length	Temp. Limits	qty.	Similar to Part #	cat.#
0.20 mm	0.33 $\mu$ m	12 m	-60 to 330/350 °C	ea.	Agilent 19091s-101	13497
	0.33 $\mu$ m	25 m	-60 to 330/350 °C	ea.	Agilent 19091s-102	13498
	0.33 $\mu$ m	50 m	-60 to 330/350 °C	ea.	Agilent 19091s-105	13499
	0.25 $\mu$ m	15 m	-60 to 330/350 °C	ea.	Agilent 19091s-431; Phenomenex 7EG-G018-11	13420
	0.25 $\mu$ m	30 m	-60 to 330/350 °C	ea.	Agilent 19091s-433; Phenomenex 7HG-G018-11	13423
	0.25 $\mu$ m	30 m	-60 to 330/350 °C	6-pk.		13423-600
0.25 mm	0.25 $\mu$ m	60 m	-60 to 330/350 °C	ea.	Agilent 19091s-436; Phenomenex 7KG-G018-11	13426
	0.40 $\mu$ m	30 m	-60 to 330/350 °C	ea.		13481
	0.50 $\mu$ m	15 m	-60 to 330/350 °C	ea.		13435
	0.50 $\mu$ m	30 m	-60 to 330/350 °C	ea.	Agilent 19091s-133; Phenomenex 7HG-G018-17	13438
	0.50 $\mu$ m	60 m	-60 to 330/350 °C	ea.		13441
	1.00 $\mu$ m	15 m	-60 to 330/350 °C	ea.	Agilent 19091s-231	13450
	1.00 $\mu$ m	30 m	-60 to 330/350 °C	ea.	Agilent 19091s-233	13453
	1.00 $\mu$ m	60 m	-60 to 330/350 °C	ea.		13456
	0.25 $\mu$ m	15 m	-60 to 330/350 °C	ea.		13421
	0.25 $\mu$ m	30 m	-60 to 330/350 °C	ea.	Agilent 19091s-413; Phenomenex 7HM-G018-11	13424
0.32 mm	0.25 $\mu$ m	60 m	-60 to 330/350 °C	ea.	Agilent 19091s-416	13427
	0.50 $\mu$ m	15 m	-60 to 330/350 °C	ea.		13436
	0.50 $\mu$ m	30 m	-60 to 330/350 °C	ea.	Agilent 19091s-113; Phenomenex 7HM-G018-17	13439
	0.50 $\mu$ m	60 m	-60 to 330/350 °C	ea.		13442
	1.00 $\mu$ m	15 m	-60 to 330/350 °C	ea.		13451
	1.00 $\mu$ m	30 m	-60 to 330/350 °C	ea.	Agilent 19091s-213	13454
	1.00 $\mu$ m	60 m	-60 to 330/350 °C	ea.		13457
	0.25 $\mu$ m	15 m	-60 to 330/350 °C	ea.		13422
	0.25 $\mu$ m	30 m	-60 to 330/350 °C	ea.		13425
	0.50 $\mu$ m	15 m	-60 to 330/350 °C	ea.		13437
0.53 mm	0.50 $\mu$ m	30 m	-60 to 330/350 °C	ea.		13440
	1.00 $\mu$ m	15 m	-60 to 330/350 °C	ea.		13452
	1.00 $\mu$ m	30 m	-60 to 330/350 °C	ea.		13455
	1.00 $\mu$ m	30 m	-60 to 330/350 °C	6-pk.		13455-600
	1.50 $\mu$ m	15 m	-60 to 330/350 °C	ea.		13467
	1.50 $\mu$ m	30 m	-60 to 330/350 °C	ea.		13470

**Rxi-5Sil MS Columns** (fused silica) low-polarity phase; Crossbond 1,4-bis(dimethylsiloxy)phenylene dimethyl polysiloxane

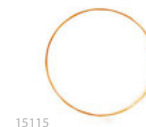
ID	df	Length	Temp. Limits	qty.	Similar to Part #	cat.#
0.10 mm	0.10 $\mu$ m	10 m	-60 to 320/350 °C	ea.		43601
	0.15 $\mu$ m	10 m	-60 to 320/350 °C	ea.		43815
0.15 mm	0.15 $\mu$ m	20 m	-60 to 320/350 °C	ea.		43816
	2.0 $\mu$ m	20 m	-60 to 320/350 °C	ea.		43817
0.18 mm	0.10 $\mu$ m	60 m	-60 to 320/350 °C	ea.		43607
	0.18 $\mu$ m	20 m	-60 to 320/350 °C	ea.	Agilent 121-5522; Phenomenex 7FD-G010-08	43602
	0.18 $\mu$ m	40 m	-60 to 320/350 °C	ea.		43605
	0.36 $\mu$ m	20 m	-60 to 320/350 °C	ea.	Agilent 121-5523; Phenomenex 7FD-G010-53	43604
	0.10 $\mu$ m	15 m	-60 to 320/350 °C	ea.	Agilent 122-5511	13605
0.25 mm	0.10 $\mu$ m	30 m	-60 to 320/350 °C	ea.	Agilent 122-5531	13608
	0.25 $\mu$ m	15 m	-60 to 320/350 °C	ea.	Agilent 122-5512; Phenomenex 7EG-G010-11	13620
	0.25 $\mu$ m	30 m	-60 to 320/350 °C	ea.	Agilent 122-5532, 122-5631; Phenomenex 7HG-G010-11	13623
	0.25 $\mu$ m	30 m	-60 to 320/350 °C	6-pk.		13623-600
	0.25 $\mu$ m	60 m	-60 to 320/350 °C	ea.	Agilent 122-5562; Phenomenex 7KG-G010-11	13626
	0.50 $\mu$ m	15 m	-60 to 320/350 °C	ea.	Agilent 122-5516	13635
	0.50 $\mu$ m	30 m	-60 to 320/350 °C	ea.	Agilent 122-5536; Phenomenex 7HG-G010-17	13638
	1.00 $\mu$ m	15 m	-60 to 320/350 °C	ea.	Agilent 122-5513	13650
	1.00 $\mu$ m	30 m	-60 to 320/350 °C	ea.	Agilent 122-5533; Phenomenex 7HG-G010-22	13653
	1.00 $\mu$ m	60 m	-60 to 320/350 °C	ea.	Agilent 122-5563	13697
0.32 mm	0.25 $\mu$ m	15 m	-60 to 320/350 °C	ea.	Agilent 123-5512	13621
	0.25 $\mu$ m	30 m	-60 to 320/350 °C	ea.	Agilent 123-5532; Phenomenex 7HM-G010-11	13624
	0.50 $\mu$ m	30 m	-60 to 320/350 °C	ea.	Agilent 123-5536; Phenomenex 7HM-G010-17	13639
	1.00 $\mu$ m	30 m	-60 to 320/350 °C	ea.	Agilent 123-5533; Phenomenex 7HM-G010-22	13654
0.53 mm	1.50 $\mu$ m	30 m	-60 to 320/330 °C	ea.	Agilent 126-5532	13670





**Rxi-5Sil MS Secondary Columns for GCxGC** (fused silica) low-polarity phase; Crossbond 1,4-bis(dimethylsiloxy)phenylene dimethyl polysiloxane

ID	df	Length	Temp. Limits	qty.	cat.#
0.15 mm	0.15 µm	2 m	-60 to 330/350 °C	ea.	15113
0.18 mm	0.18 µm	2 m	-60 to 330/350 °C	ea.	15119
0.25 mm	0.25 µm	2 m	-60 to 330/350 °C	ea.	15126



**Rxi-624Sil MS Columns** (fused silica) midpolarity Crossbond phase

ID	df	Length	Temp. Limits	qty.	Similar to Part #	cat.#
0.18 mm	1.00 µm	20 m	-20 to 300/320 °C	ea.	Agilent 121-1324; Phenomenex 7FD-G005-22	13865
	1.40 µm	30 m	-20 to 300/320 °C	ea.	Agilent 122-1334; Phenomenex 7HG-G005-27	13868
0.25 mm	1.40 µm	60 m	-20 to 300/320 °C	ea.		13869
	1.80 µm	30 m	-20 to 300/320 °C	ea.	Agilent 123-1334; Phenomenex 7HM-G005-31	13870
0.32 mm	1.80 µm	60 m	-20 to 300/320 °C	ea.	Agilent 123-1364; Phenomenex 7KM-G005-31	13872
	3.00 µm	30 m	-20 to 280/300 °C	ea.	Agilent 125-1334; Phenomenex 7HK-G005-36	13871
0.53 mm	3.00 µm	60 m	-60 to 280/300 °C	ea.		13873
	3.00 µm	75 m	-60 to 280/300 °C	ea.		13874
	3.00 µm	105 m	-60 to 280/300 °C	ea.		13875



**Rxi-65TG Columns** (fused silica) High-polarity Crossbond phase

ID	df	Length	Temp. Limits	qty.	cat.#
0.25 mm	0.10 µm	15 m	40 to 370 °C	ea.	17105
	0.10 µm	25 m	40 to 370 °C	ea.	17107
	0.10 µm	30 m	40 to 370 °C	ea.	17108
	0.10 µm	15 m	40 to 370 °C	ea.	17106
0.32 mm	0.10 µm	25 m	40 to 370 °C	ea.	17110
	0.10 µm	30 m	40 to 370 °C	ea.	17109



**Rxi-PAH Columns** (fused silica) midpolarity proprietary phase

ID	df	Length	Temp. Limits	qty.	cat.#
0.18 mm	0.07 µm	40 m	to 350/360 °C	ea.	49316
0.25 mm	0.10 µm	30 m	to 350/360 °C	ea.	49318
	0.10 µm	60 m	to 350/360 °C	ea.	49317



**Rxi-SVOCms Columns** (fused silica) Nonpolar Proprietary 5% phenyl-type phase

ID	df	Length	Temp. Limits	qty.	Similar to Part #	cat.#
0.15 mm	0.15 µm	20 m	to 340/340 °C	ea.		46616
0.18 mm	0.18 µm	20 m	to 340/340 °C	ea.	Phenomenex 7FD-G027-08	46602
0.18 mm	0.36 µm	20 m	to 330/340 °C	ea.	Agilent 121-9723; Phenomenex 7FD-G027-53	46604
0.25 mm	0.25 µm	15 m	to 340/340 °C	ea.	Phenomenex 7EG-G027-11	16620
0.25 mm	0.25 µm	30 m	to 340/340 °C	ea.	Agilent 122-9732; Phenomenex 7HG-G027-11	16623
0.25 mm	0.50 µm	30 m	to 330/340 °C	ea.	Agilent 122-9736; Phenomenex 7HG-G027-17	16638
0.32 mm	0.25 µm	30 m	to 340/340 °C	ea.	Phenomenex 7HM-G027-11	16624
0.32 mm	0.50 µm	30 m	to 330/340 °C	ea.		16639



**Rxi-XLB Columns** (fused silica) low-polarity proprietary phase

ID	df	Length	Temp. Limits	qty.	Similar to Part #	cat.#
0.10 mm	0.10 µm	10 m	30 to 340/360 °C	ea.		43701
0.18 mm	0.18 µm	20 m	30 to 340/360 °C	ea.	Phenomenex 7FD-G019-08	43702
	0.10 µm	15 m	30 to 340/360 °C	ea.	Agilent 122-1211	13705
	0.10 µm	30 m	30 to 340/360 °C	ea.	Agilent 122-1231	13708
	0.25 µm	15 m	30 to 340/360 °C	ea.	Agilent 122-1212; Phenomenex 7EG-G019-11	13720
0.25 mm	0.25 µm	30 m	30 to 340/360 °C	ea.	Agilent 122-1232; Phenomenex 7HG-G019-11	13723
	0.25 µm	60 m	30 to 340/360 °C	ea.	Agilent 122-1262; Phenomenex 7KG-G019-11	13726
	0.50 µm	30 m	30 to 340/360 °C	ea.	Agilent 122-1236; Phenomenex 7HG-G019-17	13738
	1.00 µm	30 m	30 to 340/360 °C	ea.	Agilent 122-1233	13753



Continued



ID	df	Length	Temp. Limits	qty.	Similar to Part #	cat.#
0.32 mm	0.25 µm	30 m	30 to 340/360 °C	ea.	Agilent 123-1232; Phenomenex 7HM-G019-11	13724
	0.25 µm	60 m	30 to 340/360 °C	ea.	Agilent 123-1262	13727
	0.50 µm	30 m	30 to 340/360 °C	ea.	Agilent 123-1236; Phenomenex 7HM-G019-17	13739
	1.00 µm	30 m	30 to 340/360 °C	ea.		13754
0.53 mm	0.50 µm	30 m	30 to 320/360 °C	ea.		13740

**Rxi-XLB Secondary Columns for GCxGC** (fused silica) low polarity proprietary phase

ID	df	Length	Temp. Limits	qty.	cat.#
0.15 mm	0.15 µm	2 m	30 to 340/360 °C	ea.	15115
0.18 mm	0.18 µm	2 m	30 to 340/360 °C	ea.	15121
0.25 mm	0.25 µm	2 m	30 to 340/360 °C	ea.	15128



15115

**Siltek-Deactivated Guard/Retention Gap Columns/Transfer Lines** (fused silica)

ID	Length	OD	qty.	cat.#
<b>5 m, 0.25 mm ID Siltek Guard Column</b>				
0.25 mm	5 m	0.37 ± 0.04 mm	ea.	10026
	5 m	0.37 ± 0.04 mm	6-pk.	10026-600
<b>5 m, 0.32 mm ID Siltek Guard Column</b>				
0.32 mm	5 m	0.45 ± 0.04 mm	ea.	10027
	5 m	0.45 ± 0.04 mm	6-pk.	10027-600
<b>Siltek Guard Column</b>				
0.25 mm	10 m	0.37 ± 0.04 mm	ea.	10036
	10 m	0.37 ± 0.04 mm	6-pk.	10036-600
0.32 mm	10 m	0.45 ± 0.04 mm	ea.	10037
	10 m	0.45 ± 0.04 mm	6-pk.	10037-600



10036

**Stabilwax Columns** (fused silica) polar phase; Crossbond polyethylene glycol

ID	df	Length	Temp. Limits	qty.	Similar to Part #	cat.#
0.10 mm	0.10 µm	1.1 m (±3 cm)	40 to 250/250 °C	ea.		15102
	0.10 µm	10 m	40 to 250/260 °C	ea.		42601
0.15 mm	0.15 µm	10 m	40 to 250/260 °C	ea.		43830
	0.15 µm	20 m	40 to 250/260 °C	ea.		43831
0.18 mm	0.18 µm	20 m	40 to 250 °C	ea.		40602
	0.10 µm	15 m	40 to 250/260 °C	ea.		10605
	0.10 µm	30 m	40 to 250/260 °C	ea.		10608
0.25 mm	0.10 µm	60 m	40 to 250/260 °C	ea.		10611
	0.25 µm	15 m	40 to 250/260 °C	ea.	Agilent 122-7312, 19091N-131; Scion/Bruker/Varian CP8513	10620
	0.25 µm	30 m	40 to 250/260 °C	ea.	Agilent 122-7332, 19091N-133; Scion/Bruker/Varian CP8713	10623
	0.25 µm	30 m	40 to 250/260 °C	6-pk.		10623-600
	0.25 µm	60 m	40 to 250/260 °C	ea.	Agilent 122-7362, 19091N-136; Scion/Bruker/Varian CP8723	10626
	0.50 µm	15 m	40 to 250/260 °C	ea.	Agilent 122-7313, 19091N-231; Scion/Bruker/Varian CP8523	10635
	0.50 µm	30 m	40 to 250/260 °C	ea.	Agilent 122-7333, 19091N-233; Scion/Bruker/Varian CP8746	10638
	0.50 µm	60 m	40 to 250/260 °C	ea.	Agilent 122-7363, 19091N-236; Scion/Bruker/Varian CP8748	10641
	0.10 µm	30 m	40 to 250 °C	ea.		10609
	0.25 µm	15 m	40 to 250/260 °C	ea.	Agilent 123-7312, 19091N-111; Scion/Bruker/Varian CP8543	10621
0.32 mm	0.25 µm	30 m	40 to 250/260 °C	ea.	Agilent 123-7332, 19091N-113; Scion/Bruker/Varian CP8843	10624
	0.25 µm	60 m	40 to 250/260 °C	ea.	Agilent 123-7362, 19091N-116; Scion/Bruker/Varian CP8853	10627
	0.50 µm	15 m	40 to 250/260 °C	ea.	Agilent 123-7313, 19091N-211; Scion/Bruker/Varian CP8553	10636
	0.50 µm	30 m	40 to 250/260 °C	ea.	Agilent 123-7333, 19091N-213; Scion/Bruker/Varian CP8763	10639
	0.50 µm	60 m	40 to 250/260 °C	ea.	Agilent 123-7363, 19091N-216; Scion/Bruker/Varian CP8773	10642
	1.00 µm	15 m	40 to 240/250 °C	ea.	Agilent 123-7314	10651
	1.00 µm	30 m	40 to 240/260 °C	ea.	Agilent 123-7334	10654
	1.00 µm	60 m	40 to 240/260 °C	ea.	Agilent 123-7364	10657



Continued





ID	df	Length	Temp. Limits	qty.	Similar to Part #	cat.#
0.53 mm	0.10 µm	30 m	40 to 250 °C	ea.		10610
	0.25 µm	15 m	40 to 250/260 °C	ea.		10622
	0.25 µm	30 m	40 to 250/260 °C	ea.		10625
	0.25 µm	60 m	40 to 250/260 °C	ea.		10628
	0.50 µm	15 m	40 to 250/260 °C	ea.		10637
	0.50 µm	30 m	40 to 250/260 °C	ea.		10640
	0.50 µm	60 m	40 to 250/260 °C	ea.		10643
	1.00 µm	15 m	40 to 240/250 °C	ea.	Agilent 125-7312	10652
	1.00 µm	30 m	40 to 240/250 °C	ea.	Agilent 125-7332	10655
	1.00 µm	30 m	40 to 240/250 °C	6-pk.		10655-600
	1.00 µm	60 m	40 to 240/250 °C	ea.	Agilent 125-7362	10658
	1.50 µm	15 m	40 to 230/240 °C	ea.		10666
	1.50 µm	30 m	40 to 230/240 °C	ea.	Agilent 125-7333	10669
	1.50 µm	60 m	40 to 230/240 °C	ea.	Agilent 125-7363	10672
	2.00 µm	15 m	40 to 220/230 °C	ea.	Agilent 125-7314	10667
	2.00 µm	30 m	40 to 220/230 °C	ea.	Agilent 125-7334	10670

### Stabilwax Secondary Columns for GCxGC (fused silica) polar phase; Crossbond polyethylene glycol

ID	df	Length	Temp. Limits	qty.	cat.#
0.15 mm	0.15 µm	2 m	40 to 250/260 °C	ea.	15112
0.18 mm	0.18 µm	2 m	40 to 250/260 °C	ea.	15118
0.25 mm	0.25 µm	2 m	40 to 250/260 °C	ea.	15125



15115

### Stabilwax-DA Columns (fused silica) polar phase; Crossbond acid-deactivated Carbowax polyethylene glycol—for acidic compounds

ID	df	Length	Temp. Limits	qty.	Similar to Part #	cat.#
0.25 mm	0.10 µm	15 m	40 to 250/260 °C	ea.		11005
	0.10 µm	30 m	40 to 250/260 °C	ea.		11008
	0.25 µm	15 m	40 to 250/260 °C	ea.	Agilent 122-3212, 19091F-431; Phenomenex 7EG-G009-11	11020
	0.25 µm	30 m	40 to 250/260 °C	ea.	Agilent 122-3232, 19019F-433; Phenomenex 7HG-G009-11; Scion/Bruker/Varian CP7717	11023
	0.25 µm	60 m	40 to 250/260 °C	ea.	Agilent 122-3262; Phenomenex 7KG-G009-11; Scion/Bruker/Varian CP7727	11026
	0.50 µm	15 m	40 to 250/260 °C	ea.		11035
	0.50 µm	30 m	40 to 250/260 °C	ea.	Agilent 122-3233	11038
	0.50 µm	60 m	40 to 250/260 °C	ea.	Agilent 122-3263	11041
	0.10 µm	30 m	40 to 250/260 °C	ea.		11009
	0.25 µm	15 m	40 to 250/260 °C	ea.	Agilent 123-3212, 19091F-411; Phenomenex 7EM-G009-11	11021
0.32 mm	0.25 µm	30 m	40 to 250/260 °C	ea.	Agilent 123-3232, 19091F-413; Phenomenex 7HM-G009-11	11024
	0.25 µm	60 m	40 to 250/260 °C	ea.	Agilent 123-3262	11027
	0.50 µm	15 m	40 to 250/260 °C	ea.		11036
	0.50 µm	30 m	40 to 250/260 °C	ea.	Agilent 123-3233; Phenomenex 7HM-G009-17	11039
	0.50 µm	60 m	40 to 250/260 °C	ea.	Agilent 123-3263	11042
	1.00 µm	15 m	40 to 240/250 °C	ea.	Agilent 123-3214	11051
	1.00 µm	30 m	40 to 240/250 °C	ea.	Agilent 123-3234; Scion/Bruker/Varian CP7767	11054
	1.00 µm	60 m	40 to 240/250 °C	ea.	Agilent 123-3264; Scion/Bruker/Varian CP7777	11057
	0.10 µm	15 m	40 to 250/260 °C	ea.		11007
	0.25 µm	15 m	40 to 250/260 °C	ea.		11022
0.53 mm	0.25 µm	30 m	40 to 250/260 °C	ea.	Agilent 125-3231	11025
	0.25 µm	60 m	40 to 250/260 °C	ea.		11028
	0.50 µm	15 m	40 to 250/260 °C	ea.	Agilent 125-3217	11037
	0.50 µm	30 m	40 to 250/260 °C	ea.	Agilent 125-3237	11040
	0.50 µm	60 m	40 to 250/260 °C	ea.		11043
	1.00 µm	15 m	40 to 240/250 °C	ea.	Agilent 125-3212, 19095F-120; Phenomenex 7EK-G009-22	11052
	1.00 µm	30 m	40 to 240/250 °C	ea.	Agilent 125-3232, 19095F-123; Phenomenex 7HK-G009-22; Scion/Bruker/Varian CP7486, CP7614	11055
	1.00 µm	60 m	40 to 240/250 °C	ea.	Agilent 125-3262; Scion/Bruker/Varian CP7624	11058
	1.50 µm	15 m	40 to 230/240 °C	ea.		11062
	1.50 µm	30 m	40 to 230/240 °C	ea.	Agilent 125-3233; Scion/Bruker/Varian CP7654	11065
1.50 µm	60 m	40 to 230/240 °C	ea.		11068	



Stabilwax-DA columns should not be rinsed with water.

**Stabilwax-DB Columns** (fused silica) polar phase; Crossbond base-deactivated Carbowax polyethylene glycol—for amines and basic compounds

ID	df	Length	Temp. Limits	qty.	Similar to Part #	cat.#
0.25 mm	0.25 µm	15 m	40 to 210/220 °C	ea.	Agilent 112-2112	10820
	0.25 µm	30 m	40 to 210/220 °C	ea.	Agilent 112-2132	10823
	0.50 µm	30 m	40 to 210/220 °C	ea.	Agilent 122-103E	10838
0.32 mm	0.25 µm	15 m	40 to 210/220 °C	ea.	Agilent 113-2112	10821
	0.25 µm	30 m	40 to 210/220 °C	ea.	Agilent 113-2132	10824
	0.25 µm	60 m	40 to 210/210 °C	ea.		10827
	0.50 µm	30 m	40 to 210/220 °C	ea.	Agilent 113-2133	10839
	1.00 µm	15 m	40 to 210/220 °C	ea.		10851
	1.00 µm	30 m	40 to 210/220 °C	ea.		10854
0.53 mm	1.00 µm	60 m	40 to 210/220 °C	ea.		10857
	0.50 µm	30 m	40 to 210/220 °C	ea.		10840
	1.00 µm	15 m	40 to 210/220 °C	ea.	Agilent 115-2112	10852
	1.00 µm	30 m	40 to 210/220 °C	ea.	Agilent 115-2132	10855
	1.00 µm	60 m	40 to 210/220 °C	ea.	Agilent 115-2162	10858
	1.50 µm	30 m	40 to 210/220 °C	ea.		10869

**Stabilwax-MS Columns** (fused silica)

ID	df	Length	Temp. Limits	qty.	cat.#
0.25 mm	0.25 µm	30 m	40 to 250/260 °C	ea.	10673
0.32 mm	0.25 µm	30 m	40 to 250/260 °C	ea.	10674

**Stx-CLPesticides Column Kit** proprietary Crossbond phases

Includes	qty.	cat.#
Stx-CLPesticides Column (cat.# 11546); Stx-CLPesticides2 Column (cat.# 11444); Universal Angled "Y" Press-Tight Connector (cat.# 20403); and Siltek Guard Column (cat.# 10027)	kit	11193



11193

**Stx-CLPesticides Column Kit, 0.25mm ID** proprietary Crossbond phases

Includes	qty.	cat.#
Stx-CLPesticides Column (cat.# 11543); Stx-CLPesticides2 Column (cat.# 11443); Universal Angled "Y" Press-Tight Connector (cat.# 20403); and Siltek Guard Column (cat.# 10026)	kit	11190



11190

**Stx-CLPesticides Columns** (fused silica with Siltek deactivation) proprietary Crossbond phase

ID	df	Length	Temp. Limits	qty.	cat.#
0.25 mm	0.25 µm	15 m	-60 to 310/330 °C	ea.	11540
	0.25 µm	30 m	-60 to 310/330 °C	ea.	11543
	0.32 µm	30 m	-60 to 320/330 °C	ea.	11546
0.32 mm	0.50 µm	15 m	-60 to 310/330 °C	ea.	11541
	0.50 µm	30 m	-60 to 310/330 °C	ea.	11544
	0.50 µm	30 m	-60 to 310/330 °C	6-pk.	11544-600

**Stx-CLPesticides2 Columns** (fused silica with Siltek deactivation) proprietary Crossbond phase

ID	df	Length	Temp. Limits	qty.	cat.#
0.25 mm	0.20 µm	15 m	-60 to 310/330 °C	ea.	11440
	0.20 µm	30 m	-60 to 310/330 °C	ea.	11443
	0.25 µm	15 m	-60 to 310/330 °C	ea.	11441
0.32 mm	0.25 µm	30 m	-60 to 310/330 °C	ea.	11444
	0.25 µm	30 m	-60 to 310/330 °C	6-pk.	11444-600

**Hydroguard-Treated MXT Guard/Retention Gap Columns/Transfer Lines** (passivated stainless steel)

ID	Length	OD	qty.	cat.#
0.53 mm	5 m	0.74 ± 0.025 mm	ea.	70081
	10 m	0.74 ± 0.025 mm	ea.	70084
	30 m*	0.74 ± 0.025 mm	ea.	70087



\*30-meter lengths are banded in 5-meter sections.

Diameters greater than 0.10 mm are tested with the Grob test mix to ensure high inertness.



**Intermediate-Polarity Deactivated MXT Guard/Retention Gap Columns/Transfer Lines** (passivated stainless steel)

ID	Length	OD	qty.	cat.#
0.28 mm	5 m	0.56 ± 0.025 mm	ea.	70044
	5 m	0.56 ± 0.025 mm	6-pk.	70044-600
	10 m	0.56 ± 0.025 mm	ea.	70046
0.53 mm	5 m	0.74 ± 0.025 mm	ea.	70045
	5 m	0.74 ± 0.025 mm	6-pk.	70045-600
	10 m	0.74 ± 0.025 mm	ea.	70047



**MXT-1 Columns** (Siltek-treated stainless steel) nonpolar phase; Crossbond dimethyl polysiloxane

ID	df	Length	Temp. Limits	Column Config	qty.	Similar to Part #	cat.#
0.18 mm	0.20 μm	10 m	-60 to 330/430 °C		ea.		71811
	0.20 μm	20 m	-60 to 330/430 °C		ea.		71812
	0.40 μm	20 m	-60 to 320/400 °C		ea.		71815
0.25 mm	0.10 μm	15 m	-60 to 360/430 °C		ea.		70105
	0.10 μm	30 m	-60 to 330/430 °C		ea.		70116
	0.25 μm	15 m	-60 to 360/430 °C		ea.		70120
	0.25 μm	30 m	-60 to 330/430 °C		ea.		70123
	0.25 μm	60 m	-60 to 340/430 °C		ea.		70126
	0.25 μm	105 m	-60 to 340/430 °C		ea.		70129
	0.50 μm	15 m	-60 to 330/400 °C		ea.		70135
	0.50 μm	30 m	-60 to 330/400 °C		ea.		70138
	1.00 μm	15 m	-60 to 320/360 °C		ea.		70150
	1.00 μm	30 m	-60 to 320/360 °C		ea.		70153
	1.00 μm	60 m	-60 to 320/360 °C		ea.		70156
	1.00 μm	105 m	-60 to 310/360 °C		ea.		70159
0.28 mm	0.10 μm	6 m	-60 to 400/430 °C		ea.		70102
	0.10 μm	15 m	-60 to 360/430 °C		ea.		70106
	0.10 μm	30 m	-60 to 360/430 °C		ea.		70109
	0.25 μm	15 m	-60 to 360/430 °C		ea.		70121
	0.25 μm	30 m	-60 to 360/430 °C		ea.		70124
	0.50 μm	30 m	-60 to 330/400 °C		ea.		70139
	0.50 μm	30 m	-60 to 330/400 °C	3.5" Coil	ea.		70139-273
	0.50 μm	60 m	-60 to 330/400 °C		ea.		70142
	1.00 μm	15 m	-60 to 320/360 °C		ea.		70151
	1.00 μm	30 m	-60 to 320/360 °C		ea.		70154
	1.00 μm	30 m	-60 to 320/360 °C		6-pk.		70154-600
	1.00 μm	60 m	-60 to 320/360 °C		ea.		70157
	3.00 μm	15 m	-60 to 285/360 °C		ea.		70181
	3.00 μm	30 m	-60 to 285/360 °C		ea.		70184
	3.00 μm	60 m	-60 to 285/360 °C		ea.		70187



Continued



ID	df	Length	Temp. Limits	Column Config	qty.	Similar to Part #	cat.#
0.53 mm	0.15 µm	15 m	-60 to 360/430 °C		ea.		70107
	0.25 µm	15 m	-60 to 360/430 °C		ea.		70122
	0.25 µm	30 m	-60 to 360/430 °C		ea.		70125
	0.25 µm	60 m	-60 to 340/430 °C		ea.		70128
	0.50 µm	15 m	-60 to 330/400 °C		ea.	Agilent 145-1017; Scion/Bruker/Varian CP7125	70137
	0.50 µm	30 m	-60 to 330/400 °C		ea.	Agilent 145-1037; Scion/Bruker/Varian CP7135	70140
	0.50 µm	60 m	-60 to 330/400 °C		ea.		70143
	1.00 µm	15 m	-60 to 320/360 °C		ea.		70152
	1.00 µm	30 m	-60 to 320/360 °C		ea.		70155
	1.00 µm	30 m	-60 to 320/360 °C	6" Coil	ea.		70155-271
	1.00 µm	60 m	-60 to 320/360 °C		ea.		70158
	1.00 µm	60 m	-60 to 320/360 °C	6" Coil	ea.		70158-271
	1.50 µm	15 m	-60 to 310/360 °C		ea.	Agilent 145-1012	70167
	1.50 µm	30 m	-60 to 310/360 °C		ea.	Agilent 145-1032	70170
	1.50 µm	60 m	-60 to 310/360 °C		ea.		70173
	3.00 µm	15 m	-60 to 285/360 °C		ea.		70182
	3.00 µm	30 m	-60 to 285/360 °C		ea.	Agilent 145-1034	70185
	3.00 µm	60 m	-60 to 285/360 °C		ea.		70188
	3.00 µm	105 m	-60 to 285/360 °C		ea.		70189
	5.00 µm	15 m	-60 to 270/360 °C		ea.		70177
	5.00 µm	15 m	-60 to 270/360 °C	3.5" Coil	ea.		70177-273
	5.00 µm	30 m	-60 to 270/360 °C		ea.	Agilent 145-1035	70179
	5.00 µm	30 m	-60 to 270/360 °C	3.5" Coil	ea.		70179-273
	5.00 µm	60 m	-60 to 270/360 °C		ea.		70183
	5.00 µm	60 m	-60 to 270/360 °C	3.5" Coil	ea.		70183-273
	7.00 µm	15 m	-60 to 240/360 °C		ea.		70191
	7.00 µm	30 m	-60 to 250/360 °C		ea.		70192
	7.00 µm	60 m	-60 to 240/360 °C		ea.		70193

**MXT-1301 Columns** (Siltek-treated stainless steel) low- to midpolarity phase

ID	df	Length	Temp. Limits	qty.	cat.#
0.53 mm	3.00 µm	15 m	-20 to 240/280 °C	ea.	76082
	3.00 µm	30 m	-20 to 240/280 °C	ea.	76085
	3.00 µm	60 m	-20 to 240/280 °C	ea.	76088

**MXT-1701 Columns** (Siltek-treated stainless steel) midpolarity Crossbond phase

ID	df	Length	Temp. Limits	qty.	cat.#
0.25 mm	0.25 µm	30 m	-20 to 280 °C	ea.	72023
	1.00 µm	30 m	-20 to 260 °C	ea.	72053
	0.50 µm	30 m	-20 to 270/280 °C	ea.	72040
	1.00 µm	15 m	-20 to 260 °C	ea.	72052
0.53 mm	1.00 µm	30 m	-20 to 260 °C	ea.	72055
	1.50 µm	30 m	-20 to 250 °C	ea.	72070
	3.00 µm	15 m	-20 to 240 °C	ea.	72082
	3.00 µm	30 m	-20 to 240 °C	ea.	72085
	3.00 µm	60 m	-20 to 220/240 °C	ea.	72088

**MXT-1HT SimDist Column** (Siltek-treated stainless steel) nonpolar phase

ID	df	Length	Temp. Limits	qty.	Similar to Part #	cat.#
0.53 mm	0.10 µm	5 m	-60 to 430/450 °C	ea.	Agilent CP7569	70112
	0.20 µm	5 m	-60 to 430 °C	ea.		70115
	0.21 µm	10 m	-60 to 430 °C	ea.		70118
	0.88 µm	5 m	-60 to 400/430 °C	ea.		70131
	0.88 µm	10 m	-60 to 400/430 °C	ea.		70134
	1.00 µm	10 m	-60 to 380/400 °C	ea.		70130
	1.20 µm	10 m	-60 to 380/380 °C	ea.		70119
	2.65 µm	10 m	-60 to 380/400 °C	ea.		70132
	5.00 µm	10 m	-60 to 380/400 °C	ea.		70133



**MXT-20 Columns** (Siltek-treated stainless steel) low- to midpolarity phase; Crossbond diphenyl dimethyl polysiloxane

ID	df	Length	Temp. Limits	qty.	cat.#
0.25 mm	0.25 $\mu\text{m}$	15 m	-20 to 300/340 °C	ea.	70320

**MXT-200 Columns** (Siltek-treated stainless steel) midpolarity phase; Crossbond trifluoropropylmethyl polysiloxane

ID	df	Length	Temp. Limits	qty.	cat.#
0.25 mm	0.50 $\mu\text{m}$	30 m	-20 to 330/400 °C	ea.	75038
	1.00 $\mu\text{m}$	30 m	-20 to 290/360 °C	ea.	75053
	1.00 $\mu\text{m}$	15 m	-20 to 290/360 °C	ea.	75052
	1.00 $\mu\text{m}$	30 m	-20 to 290/360 °C	ea.	75055
	1.00 $\mu\text{m}$	60 m	-20 to 290/360 °C	ea.	75058
0.53 mm	1.50 $\mu\text{m}$	30 m	-20 to 280/360 °C	ea.	75070
	1.50 $\mu\text{m}$	60 m	-20 to 260/360 °C	ea.	75073
	3.00 $\mu\text{m}$	15 m	-20 to 260/360 °C	ea.	75082
	3.00 $\mu\text{m}$	30 m	-20 to 270/360 °C	ea.	75085
	3.00 $\mu\text{m}$	60 m	-20 to 260/360 °C	ea.	75088

**MXT-2887 Column** (Siltek-treated stainless steel) nonpolar phase; Crossbond 100% dimethyl polysiloxane—for simulated distillation

ID	df	Length	Temp. Limits	qty.	Similar to Part #	cat.#
0.53 mm	2.65 $\mu\text{m}$	10 m	-60 to 360/400 °C	ea.	Agilent 145-2814	70199

**MXT-35 Columns** (Siltek-treated stainless steel) midpolarity phase; Crossbond diphenyl dimethyl polysiloxane

ID	df	Length	Temp. Limits	qty.	cat.#
0.25 mm	0.50 $\mu\text{m}$	30 m	0 to 290/340 °C	ea.	70438
0.53 mm	3.00 $\mu\text{m}$	15 m	0 to 240/340 °C	ea.	70482

**MXT-5 Columns** (Siltek-treated stainless steel) low-polarity phase; Crossbond diphenyl dimethyl polysiloxane

ID	df	Length	Temp. Limits	Column Config	qty.	Similar to Part #	cat.#
0.18 mm	0.20 $\mu\text{m}$	10 m	-60 to 325/430 °C		ea.		71821
	0.20 $\mu\text{m}$	20 m	-60 to 325/400 °C		ea.		71822
	0.20 $\mu\text{m}$	40 m	-60 to 325/430 °C		ea.		71823
	0.40 $\mu\text{m}$	10 m	-60 to 315/400 °C		ea.		71824
	0.40 $\mu\text{m}$	20 m	-60 to 315/400 °C		ea.		71825
0.25 mm	0.10 $\mu\text{m}$	15 m	-60 to 330/430 °C		ea.		70205
	0.10 $\mu\text{m}$	30 m	-60 to 330/430 °C		ea.		70208
	0.25 $\mu\text{m}$	15 m	-60 to 360/430 °C		ea.		70220
	0.25 $\mu\text{m}$	30 m	-60 to 360/430 °C		ea.		70223
	0.25 $\mu\text{m}$	60 m	-60 to 330/430 °C		ea.		70226
	0.50 $\mu\text{m}$	15 m	-60 to 330/360 °C		ea.		70235
	0.50 $\mu\text{m}$	30 m	-60 to 315/400 °C		ea.		70238
	1.00 $\mu\text{m}$	15 m	-60 to 310/340 °C		ea.		70250
	1.00 $\mu\text{m}$	30 m	-60 to 310/340 °C		ea.		70253
	0.25 $\mu\text{m}$	15 m	-60 to 340/430 °C		ea.		70221
0.28 mm	0.25 $\mu\text{m}$	30 m	-60 to 360/430 °C		ea.		70224
	0.25 $\mu\text{m}$	60 m	-60 to 340/430 °C		ea.		70227
	0.50 $\mu\text{m}$	15 m	-60 to 315/400 °C		ea.		70236
	0.50 $\mu\text{m}$	30 m	-60 to 330/400 °C		ea.		70239
	1.00 $\mu\text{m}$	15 m	-60 to 310/360 °C		ea.		70251
	1.00 $\mu\text{m}$	30 m	-60 to 325/360 °C		ea.		70254
	1.00 $\mu\text{m}$	60 m	-60 to 325/360 °C		ea.		70257
3.00 $\mu\text{m}$	30 m	-60 to 290/360 °C		ea.		70284	



Continued



ID	df	Length	Temp. Limits	Column Config	qty.	Similar to Part #	cat.#
0.53 mm	0.25 µm	15 m	-60 to 340/430 °C		ea.		70222
	0.25 µm	30 m	-60 to 340/430 °C		ea.		70225
	0.25 µm	60 m	-60 to 340/430 °C		ea.		70228
	0.50 µm	15 m	-60 to 330/400 °C		ea.		70237
	0.50 µm	30 m	-60 to 330/400 °C		ea.		70240
	1.00 µm	15 m	-60 to 310/360 °C		ea.		70252
	1.00 µm	15 m	-60 to 310/360 °C	3.5" Coil	ea.		70252-273
	1.00 µm	30 m	-60 to 325/360 °C		ea.		70255
	1.00 µm	30 m	-60 to 325/360 °C	3.5" Coil	ea.		70255-273
	1.00 µm	60 m	-60 to 310/360 °C		ea.		70258
	1.50 µm	15 m	-60 to 300/360 °C		ea.		70267
	1.50 µm	30 m	-60 to 300/360 °C		ea.	Agilent 145-5032	70270
	3.00 µm	15 m	-60 to 290/360 °C		ea.		70282
	3.00 µm	30 m	-60 to 290/360 °C		ea.		70285
	3.00 µm	60 m	-60 to 290/360 °C		ea.		70288
	5.00 µm	15 m	-60 to 270/360 °C		ea.		70277
	5.00 µm	30 m	-60 to 270/360 °C		ea.		70279
	5.00 µm	60 m	-60 to 270/360 °C		ea.		70283

**MXT-50 Columns** (Siltek-treated stainless steel) midpolarity phase; Crossbond phenyl methyl polysiloxane

ID	df	Length	Temp. Limits	qty.	cat.#
0.53 mm	0.83 µm	30 m	0 to 280/300 °C	ea.	70569
	1.00 µm	15 m	0 to 260/280 °C	ea.	70552
	1.00 µm	30 m	0 to 260/280 °C	ea.	70555

**MXT-502.2 Columns** (Siltek-treated stainless steel) proprietary Crossbond diphenyl/dimethyl polysiloxane phase

ID	df	Length	Temp. Limits	qty.	cat.#
0.28 mm	1.60 µm	30 m	-20 to 250/320 °C	ea.	70919
0.53 mm	3.00 µm	30 m	-20 to 250/320 °C	ea.	70908
	3.00 µm	105 m	-20 to 250/320 °C	ea.	70910

**MXT-624 Columns** (Siltek-treated stainless steel) low- to midpolarity phase

ID	df	Length	Temp. Limits	qty.	Similar to Part #	cat.#
0.25 mm	1.40 µm	30 m	-20 to 240/280 °C	ea.		70968
	1.40 µm	60 m	-20 to 240/280 °C	ea.		70969
0.53 mm	3.00 µm	30 m	-20 to 240/280 °C	ea.	Agilent 145-1334	70971
	3.00 µm	60 m	-20 to 240/280 °C	ea.		70973

**MXT-65 Columns** (Siltek-treated stainless steel) mid- to high-polarity phase; Crossbond diphenyl dimethyl polysiloxane

ID	df	Length	Temp. Limits	qty.	cat.#
0.25 mm	0.25 µm	30 m	50 to 300 °C	ea.	77023

**MXT-65TG Columns** (Siltek-treated stainless steel) high-polarity phase; Crossbond diphenyl dimethyl polysiloxane

ID	df	Length	Temp. Limits	qty.	cat.#
0.25 mm	0.10 µm	15 m	20 to 370 °C	ea.	77005
	0.10 µm	30 m	20 to 370 °C	ea.	77008

**MXT-Biodiesel TG Columns** (Siltek-treated stainless steel)

ID	df	Length	Temp. Limits	Modification	Column Config	qty.	cat.#
0.53 mm	0.16 µm	14 m	-60 to 380/430 °C	with 2 m Integra-Gap (Total column length = 16 meters.)	7" 11-pin cage	ea.	70289
	0.16 µm	14 m	-60 to 380/430 °C	with 2 m Integra-Gap (Total column length = 16 meters.)	3.5" Coil	ea.	70289-273
	0.10 µm	10 m	-60 to 380/430 °C		7" 11-pin cage	ea.	70292
0.32 mm	0.10 µm	10 m	-60 to 380/430 °C	with 2 m x 0.53 mm ID Retention Gap (Connected with low-dead-volume MXT connector.)	7" 11-pin cage	ea.	70290
	0.10 µm	15 m	-60 to 380/430 °C		7" 11-pin cage	ea.	70293
	0.10 µm	15 m	-60 to 380/430 °C	with 2 m x 0.53 mm ID Retention Gap (Connected with low-dead-volume MXT connector.)	7" 11-pin cage	ea.	70291
0.53 mm		2 m	-60 to 380/430 °C	Retention Gap	7" 11-pin cage	ea.	70294





**MXT-Volatiles Columns** (Siltek-treated stainless steel) proprietary Crossbond diphenyl/dimethyl polysiloxane phase

ID	df	Length	Temp. Limits	qty.	cat.#
0.28 mm	1.25 µm	30 m	-20 to 280/320 °C	ea.	70924
	1.25 µm	60 m	-20 to 280/320 °C	ea.	70926
0.53 mm	2.00 µm	30 m	-20 to 280/320 °C	ea.	70925
	2.00 µm	60 m	-20 to 280/320 °C	ea.	70927

**MXT-WAX Columns** (Siltek-treated stainless steel) polar phase; Crossbond Carbowax polyethylene glycol

ID	df	Length	Temp. Limits	Column Config	qty.	Similar to Part #	cat.#
0.25 mm	0.25 µm	15 m	40 to 250/260 °C		ea.		70620
	0.25 µm	30 m	40 to 240/260 °C		ea.		70623
	0.50 µm	30 m	40 to 250/260 °C		ea.		70638
0.28 mm	0.25 µm	30 m	40 to 250/260 °C		ea.		70624
	0.50 µm	30 m	40 to 250/260 °C		ea.		70639
	0.50 µm	60 m	40 to 250/260 °C		ea.		70642
	1.00 µm	15 m	40 to 240/250 °C		ea.		70651
	1.00 µm	30 m	40 to 240/250 °C		ea.		70654
	1.00 µm	60 m	40 to 240/250 °C		ea.		70657
	0.25 µm	15 m	40 to 250/260 °C		ea.		70622
	0.25 µm	30 m	40 to 250/260 °C		ea.		70625
	0.25 µm	30 m	40 to 250/260 °C	3.5" Coil	ea.		70625-273
	0.50 µm	15 m	40 to 250/260 °C		ea.		70637
	0.50 µm	30 m	40 to 250/260 °C		ea.		70640
	0.50 µm	30 m	40 to 250/260 °C	6" Coil	ea.		70640-271
0.53 mm	1.00 µm	15 m	40 to 240/250 °C		ea.	Agilent 145-7012; Scion/Bruker/Varian CP7148	70652
	1.00 µm	15 m	40 to 240/250 °C	6" Coil	ea.		70652-271
	1.00 µm	30 m	40 to 240/250 °C		ea.	Agilent 145-7032; Scion/Bruker/Varian CP7158	70655
	1.00 µm	30 m	40 to 240/250 °C	3.5" Coil	ea.		70655-273
	1.00 µm	30 m	40 to 240/250 °C	6" Coil	ea.		70655-271
	1.00 µm	60 m	40 to 240/250 °C		ea.		70658
	1.50 µm	15 m	40 to 230/250 °C		ea.		70666
	1.50 µm	30 m	40 to 230/250 °C		ea.		70669
	1.50 µm	60 m	40 to 230/250 °C		ea.		70672
	2.00 µm	15 m	40 to 220/260 °C		ea.		70667
2.00 µm	30 m	40 to 220/250 °C		ea.		70670	

**Siltek-Treated MXT Guard/Retention Gap Columns/Transfer Lines** (passivated stainless steel)

ID	Length	qty.	cat.#
0.28 mm	5 m	ea.	70026
	10 m	ea.	70036
	15 m	ea.	70056
	30 m	ea.	70066
0.53 mm	5 m	ea.	70028
	10 m	ea.	70038
	15 m	ea.	70058
	30 m	ea.	70068

**2abc Refinery Gas Column Set** (packed)

Description	ID	Length	Column Config	qty.	cat.#
2abc Refinery Gas Column Set (3 column set)			Agilent	set	88000-810
			Analytical Controls Configuration	set	88000-875
2.1% Carbowax 1540 Porasil C (backflush column)***	2.0 mm	2'	Analytical Controls Configuration	ea.	88004-875



88000-875

\*\*\*To be used with 2abc refinery gas column set (cat.# 88000-) to backflush and prevent C6 hydrocarbons from entering column set.

**Column Configuration Key:**

-800 General—General Configuration

-810 Agilent—(HP) 5880, 5890, 5987, 6890, 7980

-820 Scion (Bruker 430, 450) (Varian 3700, Vista Series, FID)

-830 PE/Sigma—PE 900-3920, Sigma 1, 2, 3

-840 PE Auto Sys—PE Auto System 8300/8400/8700, Clarus 500

-850 Shimadzu 14A—Shimadzu 14A, 2014

Other column configurations available.

**n-Octane on Res-Sil C Column (packed)**

Description	Mesh	ID	OD	Length	Column Config	Material	qty.	cat.#
n-Octane on Res-Sil C	80/100	2.0 mm	1/8"	20'	General	SilcoSmooth Tubing	ea.	80436-800

**Column Configuration Key:**

-800 General—General Configuration

-810 Agilent—(HP) 5880, 5890, 5987, 6890, 7980

-820 Scion (Bruker 430, 450) (Varian 3700, Vista Series, FID)

-830 PE/Sigma—PE 900-3920, Sigma 1, 2, 3

-840 PE Auto Sys—PE Auto System 8300/8400/8700, Clarus 500

-850 Shimadzu 14A—Shimadzu 14A, 2014

Other column configurations available.

**CarboBlack Columns (packed) On CarboBlack B**

Description	Mesh	ID	OD	Length	Column Config	Material	qty.	cat.#
5% Krytox (Ni 200 tubing)	60/80	2.1 mm	1/8"	3.05 m	General	Nickel 200 Tubing	ea.	80127-800
5% Carbowax 20M	60/80	2.1 mm	1/8"	6 ft.	General	Stainless Steel Tubing	ea.	88012-800
6.6% Carbowax 20M	80/120	2.1 mm	1/8"	6 ft.	Agilent	Stainless Steel Tubing	ea.	80451-810
1% Rt-1000	60/80	2.1 mm	1/8"	8 ft.	Agilent	Stainless Steel Tubing	ea.	88013-810
	60/80	2.1 mm	1/8"	6 ft.	Agilent	Stainless Steel Tubing	ea.	80452-810
	80/120	2.0 mm	1/8"	2 m	General	SilcoSmooth Tubing**	ea.	80105-800
	80/120	2.0 mm	1/8"	2 m	Agilent	SilcoSmooth Tubing**	ea.	80105-810
5% Carbowax 20M	80/120	2.0 mm	1/8"	2 m	PE Auto Sys	SilcoSmooth Tubing**	ea.	80105-840
	60/80	2.0 mm	1/8"	1.8 m	General	SilcoSmooth Tubing**	ea.	80106-800
	60/80	2.0 mm	1/8"	1.8 m	Agilent	SilcoSmooth Tubing**	ea.	80106-810
6.6% Carbowax 20M	80/120	2.0 mm	1/8"	2 m	General	SilcoSmooth Tubing**	ea.	80107-800
	80/120	2.0 mm	1/8"	2 m	Agilent	SilcoSmooth Tubing**	ea.	80107-810
1% Rt-1000	60/80	2.0 mm	1/8"	2.4 m	General	SilcoSmooth Tubing**	ea.	80206-800
	60/80	2.0 mm	1/8"	2.4 m	Agilent	SilcoSmooth Tubing**	ea.	80206-810
3% Rt-1500	80/120	2.0 mm	1/8"	3.05 m	General	SilcoSmooth Tubing**	ea.	80211-800
	80/120	2.0 mm	1/8"	3.05 m	Agilent	SilcoSmooth Tubing**	ea.	80211-810
1.5% XE-60/1% H <sub>3</sub> PO <sub>4</sub>	60/80	2.0 mm	1/8"	1.8 m	General	SilcoSmooth Tubing**	ea.	80305-800

**Column Configuration Key:**

-800 General—General Configuration

-810 Agilent—(HP) 5880, 5890, 5987, 6890, 7980

-820 Scion (Bruker 430, 450) (Varian 3700, Vista Series, FID)

-830 PE/Sigma—PE 900-3920, Sigma 1, 2, 3

-840 PE Auto Sys—PE Auto System 8300/8400/8700, Clarus 500

-850 Shimadzu 14A—Shimadzu 14A, 2014

Other column configurations available.

\*\*Siltek treated stainless steel.

**CarboBlack Columns (packed) On CarboBlack C**

Description	Mesh	ID	OD	Length	Column Config	Material	qty.	cat.#
0.2% Carbowax 1500	60/80	2.0 mm	1/8"	2 m	General	SilcoSmooth Tubing**	ea.	80121-800
	80/100	2.0 mm	1/8"	2 m	General	SilcoSmooth Tubing**	ea.	80122-800
0.1% Rt-1000	80/100	2.0 mm	1/8"	1.8 m	Agilent	SilcoSmooth Tubing**	ea.	80205-810
	80/100	2.0 mm	1/8"	1.8 m	PE Auto Sys	SilcoSmooth Tubing**	ea.	80205-840

**Column Configuration Key:**

-800 General—General Configuration

-810 Agilent—(HP) 5880, 5890, 5987, 6890, 7980

-820 Scion (Bruker 430, 450) (Varian 3700, Vista Series, FID)

-830 PE/Sigma—PE 900-3920, Sigma 1, 2, 3

-840 PE Auto Sys—PE Auto System 8300/8400/8700, Clarus 500

-850 Shimadzu 14A—Shimadzu 14A, 2014

Other column configurations available.

\*\*Siltek treated stainless steel.

**CarboBlack Packing Materials**

Description	Temp. Limits	Mesh	Min Qty	qty.	cat.#
CarboBlack B	500 °C	60/80	10	gram	25500
	500 °C	80/120	10	gram	25501
CarboBlack C	500 °C	60/80	10	gram	25502
	500 °C	80/100	10	gram	25503
5% Carbowax 20m on CarboBlack B	225 °C	80/120	10	gram	25507



25501

Continued



Description	Temp. Limits	Mesh	Min Qty	qty.	cat.#
6.6% Carbowax 20m on CarboBlack B	225 °C	80/120	10	gram	25508
0.19% picric acid on CarboBlack C	120 °C	80/100	10	gram	25510
4% Carbowax 20m on CarboBlack B-DA	200 °C	80/120	10	gram	25511

### Chromosorb Micropacked GC Columns

Description	ID	OD	Length	Temp. Limits	qty.	cat.#
20% TCEP on 80/100 Chromosorb PAW	0.75 mm	1/16"	0.56 m	0 to 175 °C	ea.	19040

### D3606 Application Column Set (packed, 2 column set)

Description	Column Config	Temp. Limits	qty.	Similar to Part #	cat.#
D3606 Application Column (2 column set)	General	up to 140 °C	2 column set	Restek 83606-800	83606A-800
	Agilent 6850	up to 140 °C	2 column set		83606A-811
	Bruker 430, 450, Varian 3800	up to 140 °C	2 column set		83606A-821
	Agilent	up to 140 °C	2 column set	Restek 83606-810	83606A-810
	PE Auto Sys	up to 140 °C	2 column set	Restek 83606-840	83606A-840
	Shimadzu 14A	up to 140 °C	2 column set	Restek 83606-850	83606A-850



83606A-800

The inlet is identified on both column 1 and column 2. Note: The inlet of column 2 is identified for proper orientation for connection to the valve.

#### Column Configuration Key:

- 800 General—General Configuration
- 810 Agilent—(HP) 5880, 5890, 5987, 6890, 7980
- 811 Agilent 6850
- 821 Bruker 430, 450, Varian 3800
- 840 PE Auto Sys—PE Auto System 8300/8400/8700, Clarus 500
- 850 Shimadzu 14A—Shimadzu 14A, 2014

Other column configurations available.

### DiatoSorb and Chromosorb Diatomaceous Earth Columns (nonbonded stationary phase packed columns)

Description	Mesh	ID	OD	Length	Column Config	Material	qty.	cat.#
3% Rt-101	100/120 Silcoport W***	2.1 mm	1/8"	6 ft.	General	Stainless Steel Tubing	ea.	80461-800
10% TCEP	100/120 Chromosorb PAW	2.1 mm	1/8"	8 ft.	General	Stainless Steel Tubing	ea.	80465-800
5% Rt-1200/1.75% Bentone 34	100/120 Silcoport W***	2.0 mm	1/8"	2 m	General	SilcoSmooth Tubing**	ea.	80125-800
5% Rt-1200/5% Bentone 34	100/120 Silcoport W***	2.0 mm	1/8"	2 m	General	SilcoSmooth Tubing**	ea.	80129-800



#### Column Configuration Key:

- 800 General—General Configuration
- 810 Agilent—(HP) 5880, 5890, 5987, 6890, 7980
- 820 Scion (Bruker 430, 450) (Varian 3700, Vista Series, FID)
- 830 PE/Sigma—PE 900-3920, Sigma 1, 2, 3
- 840 PE Auto Sys—PE Auto System 8300/8400/8700, Clarus 500
- 850 Shimadzu 14A—Shimadzu 14A, 2014

Other column configurations available.

\*\*Siltek treated stainless steel.

\*\*\*Modified version of DiatoSorb-W; highest inertness, most consistent performance.

### DiatoSorb Diatomaceous Earth Columns (bonded stationary phase packed columns)

Description	Mesh	ID	OD	Length	Column Config	Material	qty.	cat.#
3% Rtx-1	100/120 Silcoport W***	2.1 mm	1/8"	6 ft.	General	Stainless Steel Tubing	ea.	80441-800
10% Rtx-1	100/120 Silcoport W***	2.1 mm	1/8"	6 ft.	Agilent	Stainless Steel Tubing	ea.	80442-810
	100/120 Silcoport W***	2.1 mm	1/8"	6 ft.	PE Auto Sys	Stainless Steel Tubing	ea.	80442-840
20% Rtx-1	100/120 Silcoport W***	2.1 mm	1/8"	6 ft.	General	Stainless Steel Tubing	ea.	80443-800
	100/120 Silcoport W***	2.1 mm	1/8"	6 ft.	Agilent	Stainless Steel Tubing	ea.	80443-810
5% Rtx-Stabilwax	100/120 Silcoport W***	2.1 mm	1/8"	6 ft.	General	Stainless Steel Tubing	ea.	80447-800
10% Rtx-Stabilwax	100/120 Silcoport W***	2.1 mm	1/8"	6 ft.	General	Stainless Steel Tubing	ea.	80448-800
20% Rtx-Stabilwax	100/120 Silcoport W***	2.1 mm	1/8"	6 ft.	Agilent	Stainless Steel Tubing	ea.	80449-810
10% Rtx-1	100/120 Silcoport W***	2.0 mm	1/8"	2 m	Agilent	SilcoSmooth Tubing**	ea.	80405-810
20% Rtx-1	100/120 Silcoport W***	2.0 mm	1/8"	2 m	General	SilcoSmooth Tubing**	ea.	80409-800
	100/120 Silcoport W***	2.0 mm	1/8"	2 m	Agilent	SilcoSmooth Tubing**	ea.	80409-810



#### Column Configuration Key:

- 800 General—General Configuration
- 810 Agilent—(HP) 5880, 5890, 5987, 6890, 7980
- 820 Scion (Bruker 430, 450) (Varian 3700, Vista Series, FID)
- 830 PE/Sigma—PE 900-3920, Sigma 1, 2, 3
- 840 PE Auto Sys—PE Auto System 8300/8400/8700, Clarus 500
- 850 Shimadzu 14A—Shimadzu 14A, 2014

Other column configurations available.



These columns are for on-column injections. For not-on-column configuration, add suffix -901.

\*\*Sintered stainless steel.

\*\*\*Modified version of DiatoSorb-W; highest inertness, most consistent performance.

### HayeSep Micropacked GC Columns

Description	Mesh	ID	OD	Length	Temp. Limits	qty.	cat.#
HayeSep N	100/120	0.75 mm	0.95 mm	1 m	up to 165 °C	ea.	19022
	100/120	0.75 mm	0.95 mm	2 m	up to 165 °C	ea.	19023
	100/120	1.00 mm	1/16"	1 m	up to 165 °C	ea.	19020
	100/120	1.00 mm	1/16"	2 m	up to 165 °C	ea.	19021
HayeSep Q	80/100	0.53 mm	0.74 mm	2 m	up to 275 °C	ea.	19042
	100/120	0.75 mm	0.95 mm	1 m	up to 275 °C	ea.	19018
	100/120	0.75 mm	0.95 mm	2 m	up to 275 °C	ea.	19019
	100/120	1.00 mm	1/16"	1 m	up to 275 °C	ea.	19016
HayeSep S	100/120	1.00 mm	1/16"	2 m	up to 275 °C	ea.	19017
	100/120	0.75 mm	0.95 mm	1 m	up to 250 °C	ea.	19010
	100/120	0.75 mm	0.95 mm	2 m	up to 250 °C	ea.	19011
	100/120	1.00 mm	1/16"	1 m	up to 250 °C	ea.	19008
	100/120	1.00 mm	1/16"	2 m	up to 250 °C	ea.	19009

### HayeSep Packing Materials

Description	Temp. Limits	Mesh	Min Qty	qty.	cat.#
HayeSep A	165 °C	80/100	1	24 g	25032
	165 °C	100/120	1	24 g	25033
HayeSep C	250 °C	80/100	1	24 g	25036
	250 °C	100/120	1	24 g	25037
HayeSep D	290 °C	60/80	1	24 g	25563
	290 °C	80/100	1	24 g	25038
HayeSep DB	290 °C	100/120	1	24 g	25039
	290 °C	80/100	1	24 g	25568
HayeSep N	290 °C	100/120	1	24 g	25569
	165 °C	60/80	1	24 g	25570
HayeSep P	165 °C	80/100	1	24 g	25045
	165 °C	100/120	1	24 g	25046
	250 °C	60/80	1	24 g	25571
HayeSep Q	250 °C	80/100	1	24 g	25047
	250 °C	100/120	1	24 g	25048
	275 °C	60/80	1	24 g	25572
HayeSep S	275 °C	80/100	1	24 g	25049
	275 °C	100/120	1	24 g	25050
	250 °C	60/80	1	24 g	25574
HayeSep T	250 °C	80/100	1	24 g	25053
	250 °C	100/120	1	24 g	25054
	165 °C	60/80	1	24 g	25575
	165 °C	80/100	1	24 g	25055
	165 °C	100/120	1	24 g	25056



25049

### Installation Kit for Packed Columns

Description	Includes	Used with	qty.	cat.#
Packed Column Installation Kit	1/8" stainless steel nut (1); stainless steel Valco nut (1); 1/8" Vespel/graphite ferrule (1); stainless steel Valco ferrule (1); 1/8" stainless steel front ferrule (1); 1/8" stainless steel back ferrule (1)	for 2 mm ID columns; for valve applications.	kit	21067



21067

### Installation Kits for Micropacked Columns

Description	Includes	Used with	qty.	cat.#
Micropacked Column Installation Kit	1/16" Valco nut (1); 1/16" stainless steel nut (1); 1/16" Vespel/graphite ferrule (1); 1/16" graphite ferrule (1); stainless steel ferrule (1); 1/16" stainless steel front ferrule (1); 1/16" stainless steel back ferrule (1)	for 1 mm ID columns; for valve applications.	kit	21065
	1/16" stainless steel nuts (2); 1/16" Vespel/graphite ferrules (2); 1/16" graphite ferrules (2); 1/16" stainless steel front ferrules (2); 1/16" stainless steel back ferrules (2)	for 1 mm ID columns; for direct injections.	kit	21066



21065



## Micropacked Inlet Conversion Kits

Description	Includes	Used with	qty.	cat.#
Micropacked Column FID and Injection Port Adaptor Kit for Split/Splitless Injection	dual Vespel ring inlet seal, large bore; reducing nut, large bore; FID adaptor, large bore; 1/4" ferrule, Vespel/graphite; 1/4" nut, stainless steel; 1/16" ferrules, Vespel/graphite (2); 4 mm splitless liner, standard deactivation; 1/16" nuts, stainless steel (2)	For use with packed column FIDs only.	kit	22424
Micropacked Column FID and Injection Port Adaptor Kit for On-Column Injection	dual Vespel ring inlet seal, large bore; reducing nut, large bore; FID adaptor, large bore; 1/4" ferrule, Vespel/graphite; 1/4" nut, stainless steel; 1/16" ferrules, Vespel/graphite (2); Siltek treated metal liner installation guide; 1/16" nuts, stainless steel (2)	For use with packed column FIDs only.	kit	22425
Micropacked Column Injection Port Adaptor Kit for Split/Splitless Injection	dual Vespel ring inlet seal, large bore; reducing nut, large bore; 1/16" ferrule, Vespel/graphite; 1/16" nut, stainless steel; 4 mm splitless liner, standard deactivation		kit	22426
Micropacked Column Injection Port Adaptor Kit for On-Column Injection	dual Vespel ring inlet seal, large bore; reducing nut, large bore; 1/16" ferrule, Vespel/graphite; Siltek treated metal liner installation guide; 1/16" nut, stainless steel		kit	22427
Micropacked Column FID Adaptor Kit for FID	FID adaptor, large bore; 1/4" ferrule, Vespel/graphite; 1/4" nut, stainless steel; 1/16" nut, stainless steel; 1/16" ferrule, Vespel/graphite	For use with packed column FIDs only.	kit	22428



## Molecular Sieve Columns (packed)

Description	Mesh	ID	OD	Length	Column Config	Material	qty.	cat.#
Molesieve 5A	60/80	2.1 mm	1/8"	6 ft.	General	Stainless Steel Tubing	ea.	80473-800
	60/80	2.1 mm	1/8"	6 ft.	Agilent	Stainless Steel Tubing	ea.	80473-810
	80/100	2.1 mm	1/8"	3 ft.	General	Stainless Steel Tubing	ea.	88015-800
	80/100	2.1 mm	1/8"	3 ft.	Agilent	Stainless Steel Tubing	ea.	88015-810
	80/100	2.1 mm	1/8"	6 ft.	General	Stainless Steel Tubing	ea.	80474-800
	80/100	2.1 mm	1/8"	6 ft.	Agilent	Stainless Steel Tubing	ea.	80474-810
	80/100	2.1 mm	1/8"	6 ft.	PE Auto Sys	Stainless Steel Tubing	ea.	80474-840
	80/100	2.1 mm	1/8"	10 ft.	General	Stainless Steel Tubing	ea.	88014-800
Molesieve 13X	80/100	2.1 mm	1/8"	10 ft.	Agilent	Stainless Steel Tubing	ea.	88014-810
	60/80	2.1 mm	1/8"	6 ft.	General	Stainless Steel Tubing	ea.	80475-800
	60/80	2.1 mm	1/8"	6 ft.	Agilent	Stainless Steel Tubing	ea.	80475-810
	60/80	2.1 mm	1/8"	6 ft.	Varian	Stainless Steel Tubing	ea.	80475-820
	80/100	2.1 mm	1/8"	6 ft.	General	Stainless Steel Tubing	ea.	80476-800
	80/100	2.1 mm	1/8"	6 ft.	Agilent	Stainless Steel Tubing	ea.	80476-810
	80/100	2.1 mm	1/8"	6 ft.	Varian	Stainless Steel Tubing	ea.	80476-820
	60/80	2.0 mm	1/8"	2 m	General	SilcoSmooth Tubing**	ea.	80428-800
Molesieve 5A	60/80	2.0 mm	1/8"	2 m	Agilent	SilcoSmooth Tubing**	ea.	80428-810
	60/80	2.0 mm	1/8"	2 m	PE Auto Sys	SilcoSmooth Tubing**	ea.	80428-840
	80/100	2.0 mm	1/8"	1 m	General	SilcoSmooth Tubing**	ea.	80440-800
	80/100	2.0 mm	1/8"	1 m	Agilent	SilcoSmooth Tubing**	ea.	80440-810
	80/100	2.0 mm	1/8"	2 m	General	SilcoSmooth Tubing**	ea.	80429-800
	80/100	2.0 mm	1/8"	2 m	Agilent	SilcoSmooth Tubing**	ea.	80429-810
	80/100	2.0 mm	1/8"	2 m	Varian	SilcoSmooth Tubing**	ea.	80429-820
	80/100	2.0 mm	1/8"	2 m	PE Auto Sys	SilcoSmooth Tubing**	ea.	80429-840
Molesieve 13X	80/100	2.0 mm	1/8"	3.05 m	General	SilcoSmooth Tubing**	ea.	80430-800
	80/100	2.0 mm	1/8"	3.05 m	Agilent	SilcoSmooth Tubing**	ea.	80430-810
	60/80	2.0 mm	1/8"	2 m	General	SilcoSmooth Tubing**	ea.	80480-800
	80/100	2.0 mm	1/8"	2 m	General	SilcoSmooth Tubing**	ea.	80439-800
	80/100	2.0 mm	1/8"	2 m	Agilent	SilcoSmooth Tubing**	ea.	80439-810
	80/100	2.0 mm	1/8"	2 m	Varian	SilcoSmooth Tubing**	ea.	80439-820



## Column Configuration Key:

- 800 General—General Configuration
- 810 Agilent—(HP) 5880, 5890, 5987, 6890, 7980
- 820 Scion (Bruker 430, 450) (Varian 3700, Vista Series, FID)
- 830 PE/Sigma—PE 900-3920, Sigma 1, 2, 3
- 840 PE Auto Sys—PE Auto System 8300/8400/8700, Clarus 500
- 850 Shimadzu 14A—Shimadzu 14A, 2014

Other column configurations available.

\*\*Siltek treated stainless steel.

## Molesieve Micropacked GC Columns

Description	Mesh	ID	OD	Length	Temp. Limits	qty.	cat.#
Molesieve 5A	80/100	0.53 mm	0.74 mm	2 m	up to 300 °C	ea.	19041
	80/100	0.75 mm	0.95 mm	1 m	up to 300 °C	ea.	19002
	80/100	0.75 mm	0.95 mm	2 m	up to 300 °C	ea.	19003
	80/100	1.00 mm	1/16"	1 m	up to 300 °C	ea.	19000
	80/100	1.00 mm	1/16"	2 m	up to 300 °C	ea.	19001



Continued



Description	Mesh	ID	OD	Length	Temp. Limits	qty.	cat.#
Molesieve 13X	80/100	0.75 mm	0.95 mm	1 m	up to 350 °C	ea.	19006
	80/100	0.75 mm	0.95 mm	2 m	up to 350 °C	ea.	19007
	80/100	1.00 mm	1/16"	1 m	up to 350 °C	ea.	19004
	80/100	1.00 mm	1/16"	2 m	up to 350 °C	ea.	19005

**OPN on Res-Sil C Column (packed)**

Description	Mesh	ID	OD	Length	Column Config	Material	qty.	cat.#
OPN on Res-Sil C	80/100	2.0 mm	1/8"	12'	Agilent	SilcoSmooth Tubing	ea.	80437-810
	80/100	2.0 mm	1/8"	12'	General	SilcoSmooth Tubing	ea.	80437-800

**Column Configuration Key:**

-800 General—General Configuration

-810 Agilent—(HP) 5880, 5890, 5987, 6890, 7980

-820 Scion (Bruker 430, 450) (Varian 3700, Vista Series, FID)

-830 PE/Sigma—PE 900-3920, Sigma 1, 2, 3

-840 PE Auto Sys—PE Auto System 8300/8400/8700, Clarus 500

-850 Shimadzu 14A—Shimadzu 14A, 2014

Other column configurations available.

**Packed Column Inlet Adaptor Kit for 1/4" Injection Ports**

Description	Used with	qty.	cat.#
Packed Column Inlet Adaptor Kit for 1/4" Injection Ports	for 1/8" Columns	kit	21651
	for 3/16" Columns	kit	21650

21651

**Porous Polymer Columns (packed)**

Description	Mesh	ID	OD	Length	Column Config	Material	qty.	cat.#
HayeSep Q	80/100	2.1 mm	1/8"	6 ft.	General	Stainless Steel Tubing	ea.	80467-800
	80/100	2.1 mm	1/8"	6 ft.	Agilent	Stainless Steel Tubing	ea.	80467-810
	80/100	2.1 mm	1/8"	6 ft.	Varian	Stainless Steel Tubing	ea.	80467-820
	80/100	2.1 mm	1/8"	6 ft.	PE Auto Sys	Stainless Steel Tubing	ea.	80467-840
Porapak Q	80/100	2.1 mm	1/8"	6 ft.	General	Stainless Steel Tubing	ea.	80468-800
	80/100	2.1 mm	1/8"	6 ft.	PE Auto Sys	Stainless Steel Tubing	ea.	80468-840
Porapak QS	80/100	2.1 mm	1/8"	6 ft.	Agilent	Stainless Steel Tubing	ea.	80469-810
Porapak R	80/100	2.1 mm	1/8"	6 ft.	General	Stainless Steel Tubing	ea.	80470-800
	80/100	2.1 mm	1/8"	6 ft.	Agilent	Stainless Steel Tubing	ea.	80470-810
HayeSep Q	80/100	2.0 mm	1/8"	2 m	General	SilcoSmooth Tubing**	ea.	80433-800
	80/100	2.0 mm	1/8"	2 m	Agilent	SilcoSmooth Tubing**	ea.	80433-810
	80/100	2.0 mm	1/8"	2 m	PE Auto Sys	SilcoSmooth Tubing**	ea.	80433-840
Porapak Q	80/100	2.0 mm	1/8"	2 m	General	SilcoSmooth Tubing**	ea.	80427-800
	80/100	2.0 mm	1/8"	2 m	Agilent	SilcoSmooth Tubing**	ea.	80427-810
	80/100	2.0 mm	1/8"	2 m	Varian	SilcoSmooth Tubing**	ea.	80427-820
	80/100	2.0 mm	1/8"	2 m	PE Auto Sys	SilcoSmooth Tubing**	ea.	80427-840
Porapak QS	80/100	2.0 mm	1/8"	2 m	General	SilcoSmooth Tubing**	ea.	80426-800
Porapak R	80/100	2.0 mm	1/8"	2 m	General	SilcoSmooth Tubing**	ea.	80425-800

**Column Configuration Key:**

-800 General—General Configuration

-810 Agilent—(HP) 5880, 5890, 5987, 6890, 7980

-820 Scion (Bruker 430, 450) (Varian 3700, Vista Series, FID)

-830 PE/Sigma—PE 900-3920, Sigma 1, 2, 3

-840 PE Auto Sys—PE Auto System 8300/8400/8700, Clarus 500

-850 Shimadzu 14A—Shimadzu 14A, 2014

Other column configurations available.

\*\*Siltek treated stainless steel.

**Replacement Parts for Micropacked Conversion Kits**

Description	Includes	qty.	cat.#
Replacement Inlet Seals for Micropacked Column Adaptor	Dual Vespel ring inlet seals, large bore (2)	2-pk.	22429
Replacement Metal Liner Installation Guide for On-Column Injection, Siltek Treated		ea.	22430







### Res-Sil Packing Materials

Description	Temp. Limits	Mesh	Min Qty	qty.	cat.#
Res-Sil C	300 °C	60/80	10	gram	25400
	300 °C	80/100	10	gram	25028
Res-Sil B	300 °C	80/100	10	gram	25080
1% TCEP on Res-Sil B	175 °C	80/100	10	gram	25081
OPN on Res-Sil C	150 °C	80/100	10	gram	25042
n-Octane on Res-Sil C	150 °C	80/100	10	gram	25030
2% Carbowax 1540 on Res-Sil C	150 °C	80/100	10	gram	25044



### Rt-XLSulfur Micropacked Columns

Description	Mesh	ID	OD	Length	qty.	cat.#
Rt-XLSulfur Micropacked Column	100/120	0.53 mm	0.74 mm	2 m	ea.	19044
	100/120	0.75 mm	0.95 mm	1 m	ea.	19806
	100/120	0.75 mm	0.95 mm	2 m	ea.	19807
	100/120	1.00 mm	1/16"	1 m	ea.	19804
	100/120	1.00 mm	1/16"	2 m	ea.	19805



Note: Columns do not include column nuts and ferrules. Optional installation kits can be ordered separately.

### Rt-XLSulfur Packed Columns

Description	Mesh	ID	OD	Length	Column Config	qty.	cat.#
Rt-XLSulfur Packed Column	100/120	2.0 mm	1/8"	1 m	General	ea.	80484-800
	100/120	2.0 mm	1/8"	1 m	Agilent	ea.	80484-810
	100/120	2.0 mm	1/8"	2 m	General	ea.	80485-800
	100/120	2.0 mm	1/8"	2 m	Agilent	ea.	80485-810



Note: Columns do not include column nuts and ferrules. Optional installation kits can be ordered separately.

#### Column Configuration Key:

- 800 General—General Configuration
- 810 Agilent—(HP) 5880, 5890, 5987, 6890, 7980
- 820 Scion (Bruker 430, 450) (Varian 3700, Vista Series, FID)
- 830 PE/Sigma—PE 900-3920, Sigma 1, 2, 3
- 840 PE Auto Sys—PE Auto System 8300/8400/8700, Clarus 500
- 850 Shimadzu 14A—Shimadzu 14A, 2014

Other column configurations available.

### ShinCarbon ST Micropacked Columns SilcoSmooth Stainless Steel

Description	Mesh	ID	OD	Length	Temp. Limits	Material	qty.	cat.#
ShinCarbon ST Micropacked Column	80/100	0.53 mm	0.74 mm	1 m	up to 300 °C	SilcoSmooth Tubing	ea.	19045
	80/100	0.53 mm	0.74 mm	2 m	up to 300 °C	SilcoSmooth Tubing	ea.	19043
	100/120	0.75 mm	0.95 mm	1 m	up to 300 °C	SilcoSmooth Tubing	ea.	19810
	100/120	1.00 mm	1/16"	1 m	up to 300 °C	SilcoSmooth Tubing	ea.	19809
	100/120	1.00 mm	1/16"	2 m	up to 300 °C	SilcoSmooth Tubing	ea.	19808



Note: Columns do not include column nuts and ferrules. Optional installation kits can be ordered separately.

### ShinCarbon ST Packed Columns SilcoSmooth Stainless Steel

Description	Mesh	ID	OD	Length	Column Config	Material	qty.	cat.#
ShinCarbon ST Packed Column	80/100	2.0 mm	1/8"	2 m	General	SilcoSmooth Tubing	ea.	80486-800
	80/100	2.0 mm	1/8"	2 m	Agilent	SilcoSmooth Tubing	ea.	80486-810
	80/100	2.0 mm	1/8"	2 m	Varian	SilcoSmooth Tubing	ea.	80486-820
	80/100	2.0 mm	1/8"	2 m	PE Auto Sys	SilcoSmooth Tubing	ea.	80486-840



Note: Columns do not include column nuts and ferrules. Optional installation kits can be ordered separately.

#### Column Configuration Key:

- 800 General—General Configuration
- 810 Agilent—(HP) 5880, 5890, 5987, 6890, 7980
- 820 Scion (Bruker 430, 450) (Varian 3700, Vista Series, FID)
- 830 PE/Sigma—PE 900-3920, Sigma 1, 2, 3
- 840 PE Auto Sys—PE Auto System 8300/8400/8700, Clarus 500
- 850 Shimadzu 14A—Shimadzu 14A, 2014

Other column configurations available.



### Tenax Packing Materials

Description	Temp. Limits	Mesh	Min Qty	qty.	cat.#
Tenax-TA	350 °C	20/35	10	gram	25700
	350 °C	35/60	10	gram	25701
	350 °C	60/80	10	gram	25550
	350 °C	80/100	10	gram	25551
Tenax-GR	350 °C	60/80	10	gram	25552
	350 °C	80/100	10	gram	25553



25550

### MXT-Alumina BOND/MAPD Columns (Siltek-treated stainless-steel PLOT)

ID	df	Length	Temp. Limits	Column Config	qty.	cat.#
0.53 mm	10 µm	30 m	-60 to 250 °C	7" 11-pin cage	ea.	79728
	10 µm	30 m	-60 to 250 °C	3.5" Coil	ea.	79728-273



### MXT-Alumina BOND/Na2SO4 Columns (Siltek-treated stainless-steel PLOT)

ID	df	Length	Temp. Limits	Column Config	qty.	cat.#
0.53 mm	10 µm	30 m	-60 to 200 °C	7" 11-pin cage	ea.	79714
	10 µm	30 m	-60 to 200 °C	3.5" Coil	ea.	79714-273



### MXT-Msieve 5A Columns (Siltek-treated stainless-steel PLOT)

ID	df	Length	Temp. Limits	Column Config	qty.	cat.#
0.53 mm	50 µm	30 m	-100 to 300 °C	7" 11-pin cage	ea.	79723
	50 µm	30 m	-100 to 300 °C	3.5" Coil	ea.	79723-273



### MXT-Q-BOND Columns (Siltek-treated stainless-steel PLOT)

ID	df	Length	Temp. Limits	Column Config	qty.	cat.#
0.25 mm	8 µm	15 m	-60 to 300 °C	7" 11-pin cage	ea.	79718
	8 µm	15 m	-60 to 300 °C	3.5" Coil	ea.	79718-273
0.53 mm	20 µm	30 m	-60 to 280/300 °C	7" 11-pin cage	ea.	79716
	20 µm	30 m	-60 to 280/300 °C	3.5" Coil	ea.	79716-273



### MXT-S-BOND Columns (Siltek-treated stainless-steel PLOT)

ID	df	Length	Temp. Limits	Column Config	qty.	cat.#
0.53 mm	20 µm	30 m	-60 to 250 °C	7" 11-pin cage	ea.	79712
	20 µm	30 m	-60 to 250 °C	3.5" Coil	ea.	79712-273



### PLOT Column Particle Trap

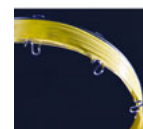
Description	Includes	Size	qty.	cat.#
PLOT Column Particle Trap	Press-Tight connectors (2); 2.5 m, 0.25 mm ID column; high-temperature string	0.25 mm ID	ea.	19774
	Press-Tight connectors (2); 2.5 m, 0.32 mm ID column; high-temperature string	0.32 mm ID	ea.	19753
	Press-Tight connectors (2); 2.5 m, 0.53 mm ID column; high-temperature string	0.53 mm ID	ea.	19754



19754

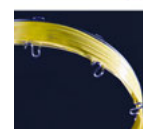
### Rt-Alumina BOND/CFC Columns (fused silica PLOT)

ID	df	Length	Temp. Limits	qty.	cat.#
0.53 mm	10 µm	30 m	-60 to 200 °C	ea.	19763



### Rt-Alumina BOND/KCI Columns (fused silica PLOT) KCI deactivation

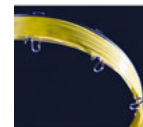
ID	df	Length	Temp. Limits	qty.	cat.#
0.25 mm	4 µm	30 m	-60 to 200 °C	ea.	19776
0.32 mm	5 µm	30 m	-60 to 200 °C	ea.	19761
	5 µm	50 m	-60 to 200 °C	ea.	19762
0.53 mm	10 µm	30 m	-60 to 200 °C	ea.	19759
	10 µm	50 m	-60 to 200 °C	ea.	19760





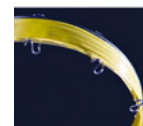
**Rt-Alumina BOND/MAPD Columns** (fused silica PLOT)

ID	df	Length	Temp. Limits	qty.	cat.#
0.25 mm	4 µm	30 m	-60 to 250 °C	ea.	19781
	5 µm	30 m	-60 to 250 °C	ea.	19779
0.32 mm	5 µm	50 m	-60 to 250 °C	ea.	19780
	10 µm	30 m	-60 to 250 °C	ea.	19777
0.53 mm	10 µm	50 m	-60 to 250 °C	ea.	19778



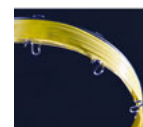
**Rt-Alumina BOND/Na<sub>2</sub>SO<sub>4</sub> Columns** (fused silica PLOT) Na<sub>2</sub>SO<sub>4</sub> deactivation

ID	df	Length	Temp. Limits	qty.	cat.#
0.25 mm	4 µm	30 m	-60 to 200 °C	ea.	19775
	5 µm	30 m	-60 to 200 °C	ea.	19757
0.32 mm	5 µm	50 m	-60 to 200 °C	ea.	19758
	10 µm	30 m	-60 to 200 °C	ea.	19755
0.53 mm	10 µm	50 m	-60 to 200 °C	ea.	19756



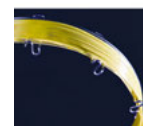
**Rt-Msieve 5A Columns** (fused silica PLOT)

ID	df	Length	Temp. Limits	qty.	Similar to Part #	cat.#
0.25 mm	20 µm	15 m	-100 to 300 °C	ea.		19773
	30 µm	15 m	-100 to 300 °C	ea.	Agilent 19091P-MS7; Scion/Bruker/Varian CP7535	19720
0.32 mm	30 µm	30 m	-100 to 300 °C	ea.	Agilent 19091P-MS8; Scion/Bruker/Varian CP7536	19722
	50 µm	15 m	-100 to 300 °C	ea.	Agilent 19095P-MS9; Scion/Bruker/Varian CP7537	19721
0.53 mm	50 µm	30 m	-100 to 300 °C	ea.	Agilent 19095P-MS0; Scion/Bruker/Varian CP7538	19723



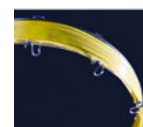
**Rt-Q-BOND Columns** (fused silica PLOT) 100% divinylbenzene

ID	df	Length	Temp. Limits	qty.	cat.#
0.25 mm	8 µm	15 m	-60 to 280/300 °C	ea.	19764
	8 µm	30 m	-60 to 280/300 °C	ea.	19765
0.32 mm	10 µm	15 m	-60 to 280/300 °C	ea.	19743
	10 µm	30 m	-60 to 280/300 °C	ea.	19744
0.53 mm	20 µm	15 m	-60 to 280/300 °C	ea.	19741
	20 µm	30 m	-60 to 280/300 °C	ea.	19742



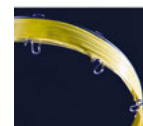
**Rt-QS-BOND Columns** (fused silica PLOT) porous divinylbenzene homopolymer

ID	df	Length	Temp. Limits	qty.	cat.#
0.25 mm	8 µm	15 m	-60 to 250 °C	ea.	19767
	8 µm	30 m	-60 to 250 °C	ea.	19768
0.32 mm	10 µm	15 m	-60 to 250 °C	ea.	19739
	10 µm	30 m	-60 to 250 °C	ea.	19740
0.53 mm	20 µm	15 m	-60 to 250 °C	ea.	19737
	20 µm	30 m	-60 to 250 °C	ea.	19738



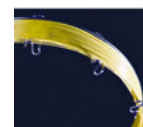
**Rt-S-BOND Columns** (fused silica PLOT) porous divinylbenzene homopolymer

ID	df	Length	Temp. Limits	qty.	cat.#
0.25 mm	8 µm	15 m	-60 to 250 °C	ea.	19769
	8 µm	30 m	-60 to 250 °C	ea.	19770
0.32 mm	10 µm	30 m	-60 to 250 °C	ea.	19748
	20 µm	15 m	-60 to 250 °C	ea.	19745
0.53 mm	20 µm	30 m	-60 to 250 °C	ea.	19746



**Rt-U-BOND Columns** (fused silica PLOT) divinylbenzene ethylene glycol/dimethylacrylate

ID	df	Length	Temp. Limits	qty.	cat.#
0.25 mm	8 µm	15 m	-60 to 190 °C	ea.	19771
	8 µm	30 m	-60 to 190 °C	ea.	19772
	10 µm	15 m	-60 to 190 °C	ea.	19751
0.32 mm	10 µm	30 m	-60 to 190 °C	ea.	19752
	20 µm	15 m	-60 to 190 °C	ea.	19749
0.53 mm	20 µm	30 m	-60 to 190 °C	ea.	19750



## Notes:

## Notes:

Learn more at [www.bgb-info.com/restek](http://www.bgb-info.com/restek)

**BGB** GC|LC  
MS|CE

DR-BGB-2222

[www.bgb-shop.com](http://www.bgb-shop.com)

**Switzerland** BGB Analytik AG • Rohrmattstrasse 4 • 4461 Böckten • Phone +41 61 991 00 46 • Fax +41 61 991 00 25 • [sales@bgb-analytik.com](mailto:sales@bgb-analytik.com)

**Austria** BGB Analytik Vertrieb GmbH • Mühlestraße 1 • 79539 Lörrach • Phone +49 7621 5884270 • Fax +49 7621 5884289 • [sales.de@bgb-analytik.com](mailto:sales.de@bgb-analytik.com)

**Turkey and Azerbaijan** BGB Analytik Laboratuvar Malzemeleri Ticaret LTD.ŞTİ • Starport Residence • Yenişehir Mah. Osmanlı Bulvarı. • Sümbül Sok. No:10, Daire: 193 • 34912 Kurtköy, Pendik, İstanbul • Phone +90 2169092048 • [sales.tr@bgb-analytik.com](mailto:sales.tr@bgb-analytik.com)