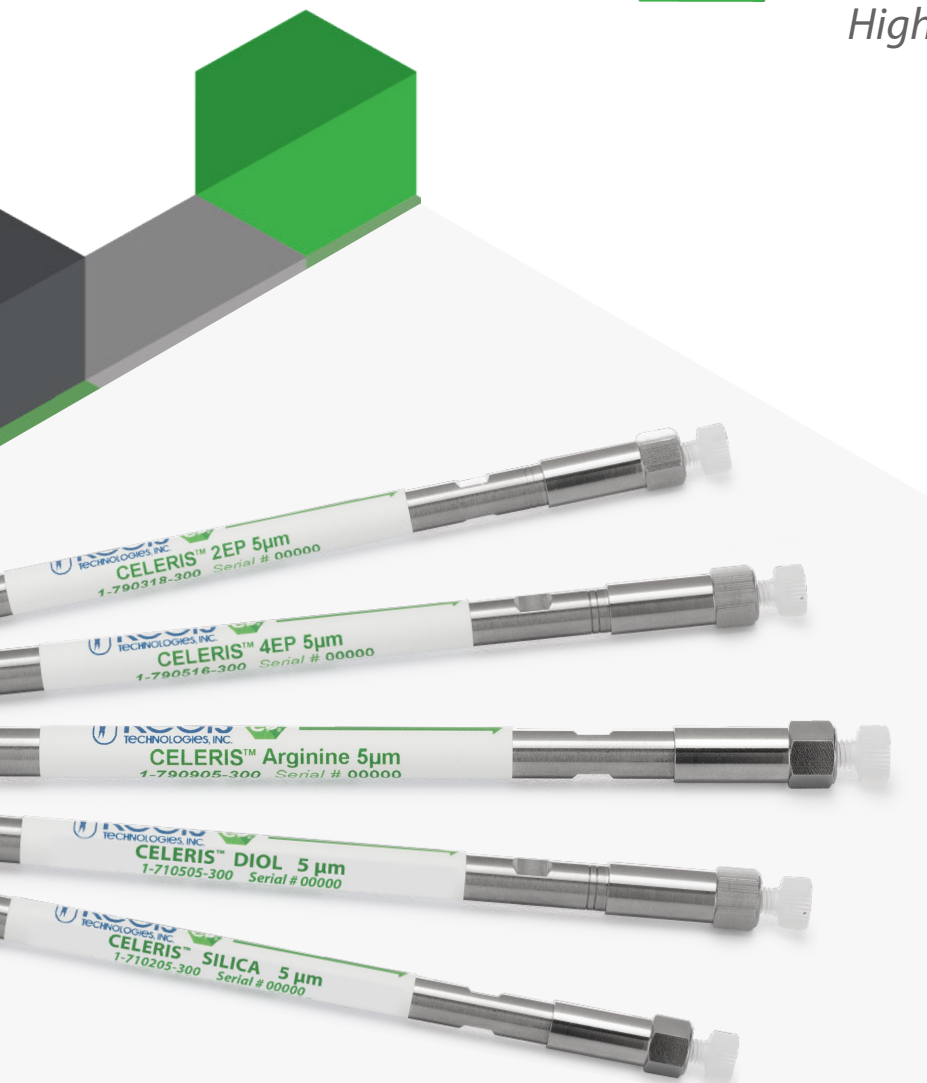




CELERIS™

Achiral SFC Columns

High Performance SFC Separations



Packed Columns for SFC Separations

- Broad Selectivity
- Scalable from Analytical to Prep
- High Efficiency 3-, 5-, and 10µm Phases

BGB

GC	LC
MS	CE



CELERIS™ Achiral SFC Columns

High Performance SFC Separations at an Affordable Price

Supercritical fluid chromatography (SFC) is widely recognized as a preferred technique for chiral applications. More chemists are discovering the benefits of SFC as a greener alternative to HPLC separation of complex samples containing a range of different functional groups and polarities. SFC provides better resolution, faster separation, and higher sample throughput compared to HPLC.

The CELERIS™ family of achiral stationary phases has been specifically designed for SFC separations, delivering high capacity, broad selectivity, excellent peak shapes, and reproducible performance over long column lifetimes. CELERIS™ high performance phases provide rapid separation and recovery of purified components at a lower price than competitor offerings, enabling use of larger column sizes to reduce the number of purification cycles required to achieve purity of the batch.

**30%
SAVINGS**

CELERIS™ columns deliver high performance with an average savings of 30% over competitive column prices.



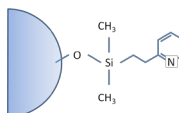
CELERIS™ Achiral Media Specifications

Pore Size	100Å
Surface Area	350 m ² /g
Particle Size	3-, 5-, and 10µm

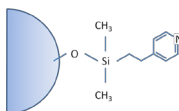
CELERIS™ 2EP & 4EP Columns

Ethyl pyridine phases are the workhorse phases for preparative and process scale SFC purifications. CELERIS™ 2EP (2-ethyl pyridine) and 4EP (4-ethyl pyridine) media is designed to be highly reproducible based on tight product specifications and low metal content. CELERIS™ 2EP is especially well-suited for separation of basic compounds and exhibits broad selectivity towards a variety of other compound types. The CELERIS™ 4EP phase offers alternate selectivity to the 2EP phase.

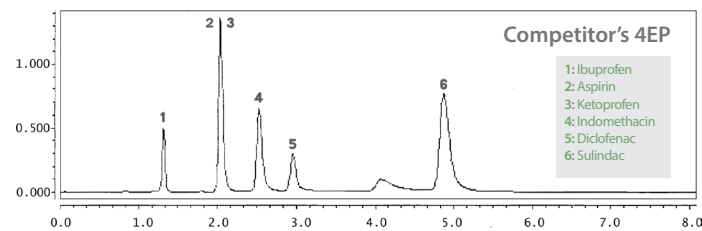
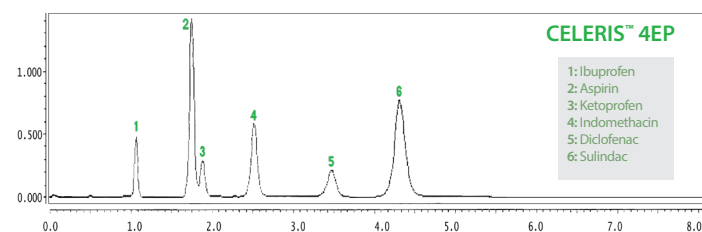
2-Ethyl Pyridine Chemical Structure



4-Ethyl Pyridine Chemical Structure



CELERIS™ ethyl pyridine phases provide similar or better separation than competing EP phases



Column Dimensions: 15 cm x 4.6 mm, 5 µm; Mobile Phase: CO₂/CH₃OH (80/20); Flow Rate: 3.20 mL/min; Temperature: 40° C; Pressure: 125 bar; Detection: UV 230 nm

CELERIS™ Achiral SFC Columns

Ordering Information

Particle Size	Dimensions	2Ep Catalog #	4EP Catalog #	Animo Catalog #	Arginine Catalog #	Diol Catalog #	PEI Catalog #	Silica Catalog #
3 µm	2 cm x 3.0 mm		1-790528-300		-		-	
	5 cm x 2.1 mm	1-790210-300	1-790529-300	1-790729-300	-	1-710409-300	-	1-710109-300
	10 cm x 2.1 mm	1-790211-300	1-790530-300	1-790730-300	-	1-710410-300	-	1-710110-300
	15 cm x 2.1 mm	1-790212-300	1-790531-300	1-790731-300	-	1-710411-300	-	1-710111-300
5 µm	2 cm x 3.0 mm	1-790209-300	1-790528-300	1-790728-300	-	1-710408-300	-	1-710108-300
	5 cm x 3.0 mm	1-790208-300	1-790527-300	1-790727-300	-	1-710407-300	-	1-710107-300
	10 cm x 3.0 mm	1-790207-300	1-790526-300	1-790726-300	-	1-710406-300	-	1-710106-300
	15 cm x 3.0 mm	1-790206-300	1-790525-300	1-790725-300	-	1-710405-300	-	1-710105-300
	5 cm x 4.6 mm	1-790202-300	1-790521-300	1-790721-300	-	1-710401-300	-	1-710101-300
	10 cm x 4.6 mm	1-790203-300	1-790522-300	1-790722-300	-	1-710402-300	-	1-710102-300
	15 cm x 4.6 mm	1-790204-300	1-790523-300	1-790723-600	-	1-710403-300	-	1-710103-300
	25 cm x 4.6 mm	1-790205-300	1-790524-300	1-790724-300	-	1-710404-300	-	1-710104-300
5 µm	5 cm x 2.1 mm	1-790317-300	1-790515-300	1-790717-300	1-790917-300	1-710517-300	1-790817-300	1-710217-300
	10 cm x 2.1 mm	1-790316-300	1-790514-300	1-790716-300	1-790916-300	1-710516-300	1-790816-300	1-710216-300
	15 cm x 2.1 mm	1-790306-300	1-790506-300	1-790706-300	1-790906-300	1-710506-300	1-790806-300	1-710206-300
	5 cm x 3.0 mm	1-790315-300	1-790513-300	1-790715-300	1-790915-300	1-710515-300	1-790815-300	1-710215-300
	10 cm x 3.0 mm	1-790313-300	1-790511-300	1-790713-300	1-790913-300	1-710513-300	1-790813-300	1-710213-300
	15 cm x 3.0 mm	1-790318-300	1-790516-300	1-790718-300	1-790918-300	1-710518-300	1-790818-300	1-710218-300
	5 cm x 4.6 mm	1-790314-300	1-790512-300	1-790714-300	1-790914-300	1-710514-300	1-790814-300	1-710214-300
	10 cm x 4.6 mm	1-790312-300	1-790510-300	1-790712-300	1-790912-300	1-710512-300	1-790812-300	1-710212-300
	15 cm x 4.6 mm	1-790305-300	1-790505-300	1-790705-300	1-790905-300	1-710505-300	1-790805-300	1-710205-300
	25 cm x 4.6 mm	1-790301-300	1-790501-300	1-790701-300	1-790901-300	1-710501-300	1-790801-300	1-710201-300
	25 cm x 10 mm	1-790302-300	1-790502-300	1-790702-300	1-790902-300	1-710502-300	1-790802-300	1-710202-300
	10 cm x 21.1 mm	1-790310-300	1-790517-300	1-790710-300	1-790910-300	1-710510-300	1-790810-300	1-710210-300
	15 cm x 21.1 mm	1-790309-300	1-790509-300	1-790709-300	1-790909-300	1-710509-300	1-790809-300	1-710209-300
	25 cm x 21.1 mm	1-790307-300	1-790507-300	1-790707-300	1-790907-300	1-710507-300	1-790807-300	1-710207-300
	15 cm x 30 mm	1-790308-300	1-790508-300	1-790708-300	1-790908-300	1-710508-300	1-790808-300	1-710208-300
	25 cm x 30 mm	1-790303-300	1-790503-300	1-790703-300	1-790903-300	1-710503-300	1-790803-300	1-710203-300
15 cm x 50 mm	1-790311-300	1-790518-300	1-790711-300	1-790911-300	1-710511-300	1-790811-300	1-710211-300	
25 cm x 50 mm	1-790304-300	1-790504-300	1-790704-300	1-790904-300	1-710504-300	1-790804-300	1-710204-300	
10 µm	5 cm x 2.1 mm	1-790411-300	1-790613-300	-	-	1-710611-300	-	1-710311-300
	5 cm x 4.6 mm	1-790412-300	1-790614-300	-	-	1-710612-300	-	1-710312-300
	10 cm x 4.6 mm	1-790413-300	1-790615-300	-	-	1-710613-300	-	1-710313-300
	15 cm x 4.6 mm	1-790401-300	1-790601-300	-	-	1-710601-300	-	1-710301-300
	15 cm x 10 mm	1-790414-300	1-790604-300	-	-	1-710614-300	-	1-710314-300
	15 cm x 21.1 mm	1-790403-300	1-790605-300	-	-	1-710603-300	-	1-710303-300
	25 cm x 4.6 mm	1-790402-300	1-790602-300	-	-	1-710602-300	-	1-710302-300
	25 cm x 10 mm	1-790404-300	1-790606-300	-	-	1-710604-300	-	1-710304-300
25 cm x 21.1 mm	1-790405-300	1-790607-300	-	-	1-710605-300	-	1-710305-300	
25 cm x 30 mm	1-790407-300	1-790609-300	-	-	1-710607-300	-	1-710307-300	
25 cm x 50 mm	1-790408-300	1-790610-300	-	-	1-710608-300	-	1-710308-300	