

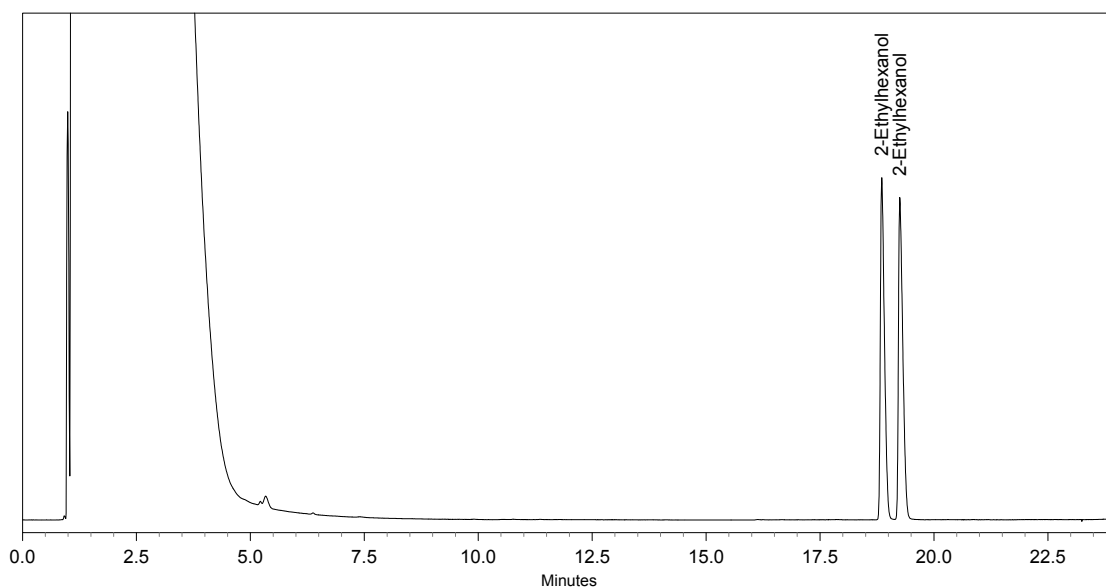
Chiral GC-Separation of 2-Ethyl-1-hexanol

Synonym: Isooctylalcohol

Column: BGB-174
30m x 0.25mm I.D. 0.25 μ m df
P/N: 27430-025

Conditions: Carrier Gas: Helium 250 kPa
Oven: 50° initial; rate 2°/min
Injector: Split 1:20, Temp. 220°
Detector: FID, Temp. 220°
Sample: 0,01% in Dichloromethane, Injection volume 1 μ l

Contact: info@bgb-analytik.com



Retention Time	Name
18.86	2-Ethylhexanol
19.25	2-Ethylhexanol