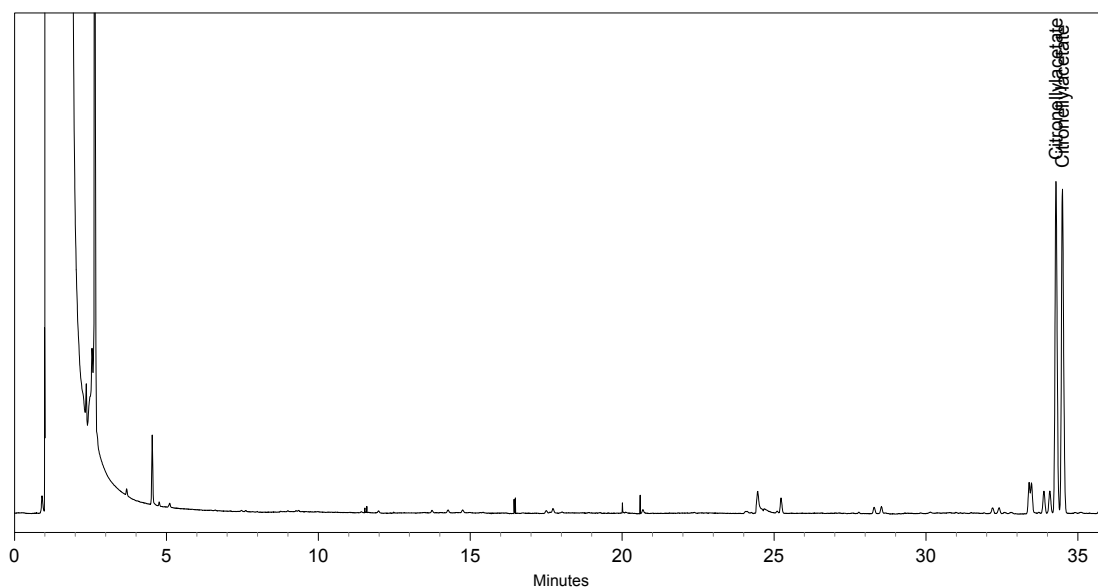


Chiral GC-Separation of Citronellylacetate

Column: BGB-178PH
25m x 0.25mm I.D. 0.25 μ m df
P/N: 27825-025

Conditions: Carrier Gas: Helium 200 kPa
Oven: 40° initial; rate 2°/min
Injector: Split 1:20, Temp. 220°
Detector: FID, Temp. 220°
Sample: 0,01% in Dichloromethane, Injection volume 1 μ l

Contact: info@bgb-analytik.com



Retention Time	Name
----------------	------

34.3	Citronellylacetate
------	--------------------

34.5	Citronellylacetate
------	--------------------

