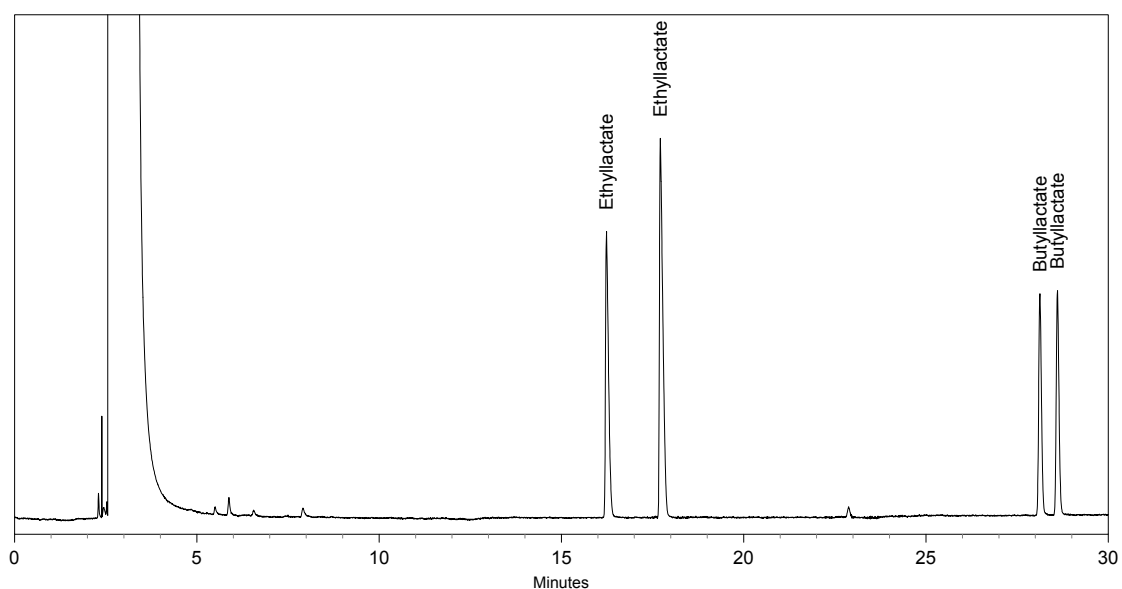


Chiral GC-Separation of Ethyl & Butyllactate

Column: BGB-176SE
30m x 0.25mm I.D. 0.25 μ m df
P/N: 27630-025SE

Conditions: Carrier Gas: Hydrogen 80 kPa
Oven: 50°, rate 2°/min
Injector: Split 1:20, Temp. 220°
Detector: FID, Temp. 220°
Sample: 0,02% in Dichloromethane, Injection volume 1 μ l



Retention Time	Name
16.2	Ethyllactate
17.7	Ethyllactate
28.1	Butyllactate
28.6	Butyllactate