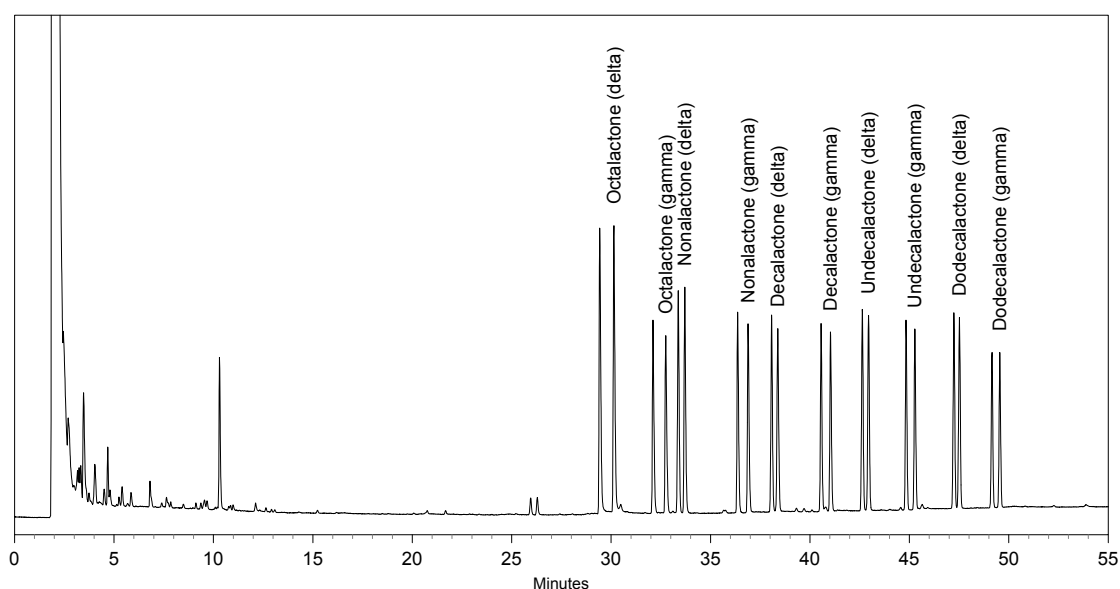


Chiral GC-Separation of gamma - and delta Lactones

Column: BGB-174
30m x 0.25mm I.D. 0.25 μ m df
P/N: 27430-025

Conditions: Carrier Gas: Helium 120 kPa
Oven: 100° initial; rate 2°/min
Injector: Split 1:20, Temp. 220°
Detector: FID, Temp. 220°
Sample: 0,01% in Dichloromethane, Injection volume 1 μ l

Contact: info@bgb-analytik.com



Retention Time	Name
----------------	------

30.1	Octalactone (delta)
32.7	Octalactone (gamma)
33.7	Nonalactone (delta)
36.9	Nonalactone (gamma)
38.4	Decalactone (delta)
41.0	Decalactone (gamma)
42.9	Undecalactone (delta)
45.3	Undecalactone (gamma)
47.5	Dodecalactone (delta)
49.5	Dodecalactone (gamma)