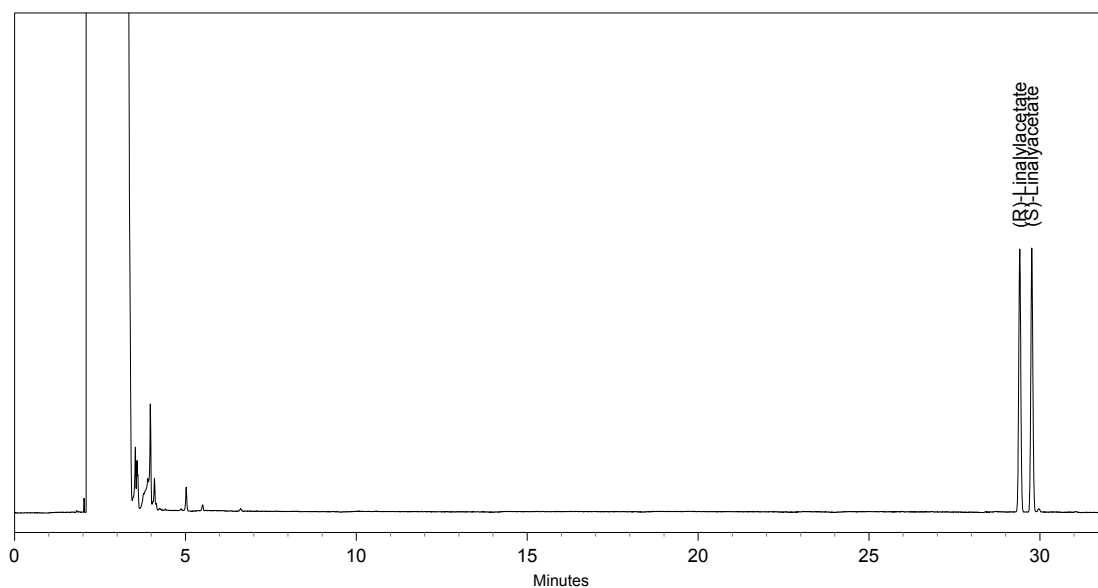


Chiral GC-Separation of Linalylacetate

Column: BGB-178PH
25m x 0.25mm I.D. 0.25 μ m df
P/N: 27825-025PH

Conditions: Carrier Gas: Helium 95 kPa
Oven: 50° initial; rate 2°/min
Injector: Split 1:30, Temp. 230°
Detector: FID, Temp. 230°
Sample: 0,01% in Hexane, Injection volume 1 μ l

Contact: info@bgb-analytik.com



Retention Time	Name
29.41	(R)-Linalylacetate
29.76	(S)-Linalylacetate