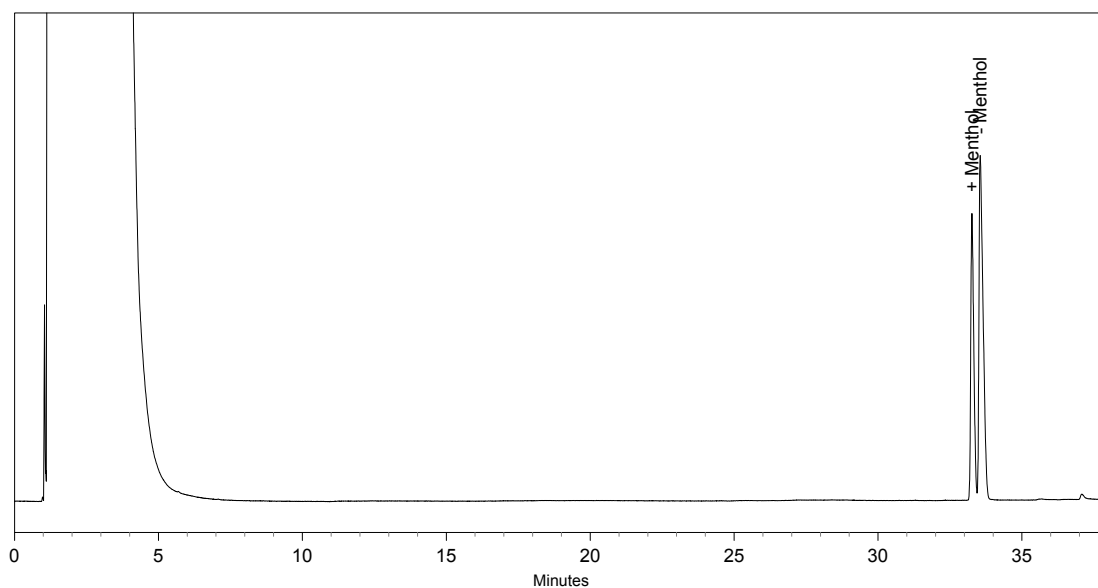


Chiral GC-Separation of Menthol

Column: BGB-174
30m x 0.25mm I.D. 0.25 μ m df
P/N: 27430-025

Conditions: Carrier Gas: Helium 250 kPa
Oven: 50° initial; rate 1,5°/min
Injector: Split 1:20, Temp. 220°
Detector: FID, Temp. 220°
Sample: 0,01% in Dichloromethane, Injection volume 1 μ l

Contact: info@bgb-analytik.com



Retention Time	Name
----------------	------

33.3	+ Menthol
------	-----------

33.6	- Menthol
------	-----------

