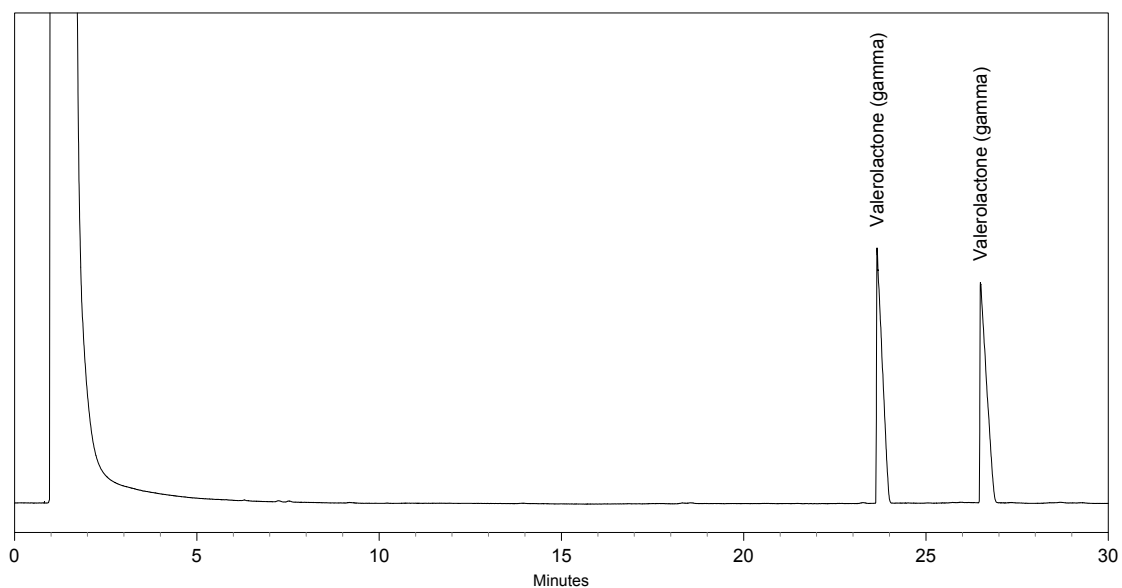


## Chiral GC-Separation of (gamma) - Valerolactone

Column: BGB-174  
30m x 0.25mm I.D. 0.25 $\mu$ m df  
P/N: 27430-025

Conditions: Carrier Gas: Helium 250 kPa  
Oven: 100° initial; rate 2°/min  
Injector: Split 1:20, Temp. 220°  
Detector: FID, Temp. 220°  
Sample: 0,01% in Dichloromethane, Injection volume 1 $\mu$ l

Contact: [info@bgb-analytik.com](mailto:info@bgb-analytik.com)



| Retention Time | Name |
|----------------|------|
|----------------|------|

|      |                       |
|------|-----------------------|
| 23.7 | Valerolactone (gamma) |
| 26.5 | Valerolactone (gamma) |