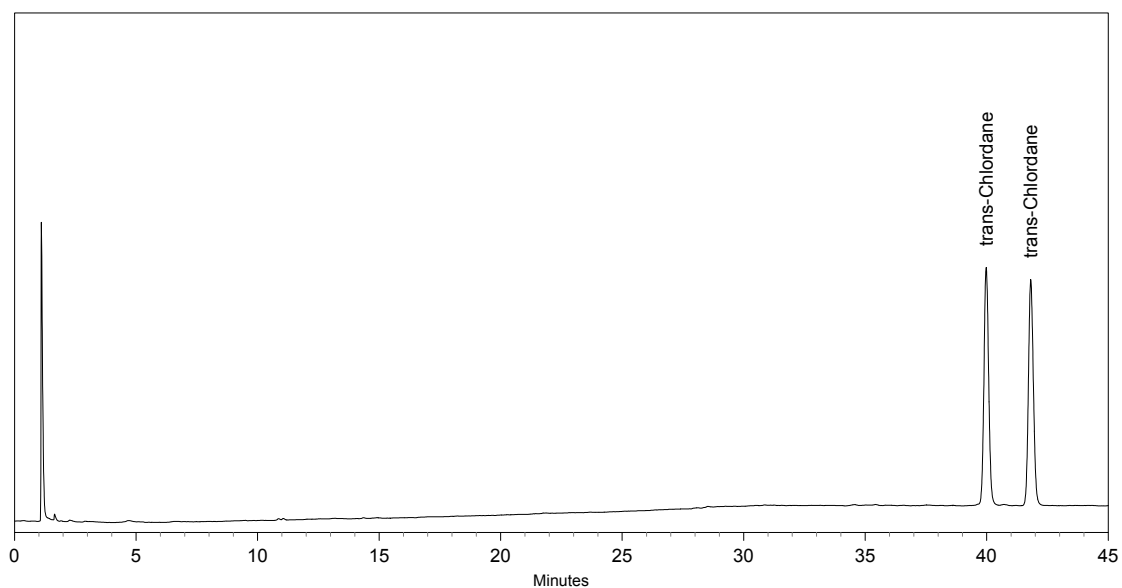


Chiral GC-Separation of trans-Chlordane

Column: BGB-172
30m x 0.25mm I.D. 0.25 μ m df
P/N: 27230-025

Conditions: Carrier Gas: Helium 250 kPa
Oven: 180° initial; rate 1°/min
Injector: Split 1:20, Temp. 250°
Detector: ECD, Temp. 250°
Sample: 0,0005% in Dichloromethane, Injection vol. 1 μ l

Contact: info@bgb-analytik.com



Retention Time	Name
40.0	trans-Chlordane
41.8	trans-Chlordane