

ChromTech Application Bulletin No.2 (2001)

Need to separate aminoalcohol enantiomers?

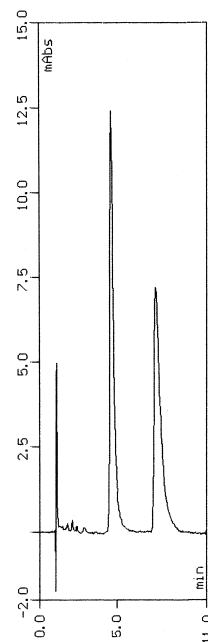
If so, the best column available is **CHIRAL-CBH**. The table below shows a selection of aminoalcohols resolved on this column. The enantioselectivity and resolution are impressive:

Substance	α	R_s
Acebutolol	4.16	7.33
Atenolol	2.26	4.19
Betaxolol	3.63	6.45
Bisoprolol	3.95	7.82
Carbuterol	1.66	4.06
Dobutamine	1.78	3.41
Dropropizine	1.49	2.85
Epanolol	2.22	3.64
Epinephrine	1.69	4.00
Metanephrine	1.38	2.65
Metoprolol	3.16	7.15
Moprolol	1.91	4.21
Norepinephrine	2.12	4.99
Normetanephrine	2.04	4.82
Octopamine	2.50	6.81
Oxybutynine	2.08	3.42
Pamatolol	2.31	5.34
Phenyletanolamine	1.54	3.26
Practolol	1.36	2.51
Propafenone	2.04	4.10
Proxyphylline	1.63	2.47
Sotalol	1.26	2.52
Talinolol	1.77	3.14
Tetrahydropapaveroline	1.76	3.45
Timolol	4.10	5.34
Tolamolol	2.07	3.68
Toliprolol	6.5	10.80

As can be seen, the list contains betablockers, catecholamines and other amines. However, also other types of amines, for example aminoketones, can be resolved.

The ability to resolve catecholamines as epinephrine, metanephrine, norepinephrine and normetanephrine is

a unique property of the **CHIRAL-CBH** column. Below is an example, the separation of normetanephrine:



Column:
CHIRAL-CBH 100x4.0 mm
+ guard

Mobile phase:
5% 2-propanol in 10 mM
sodium phosphate buffer
pH 6.0 + 50 uM disodium
EDTA

Sample conc.:
0.05 mg/ml

Flow rate:
0.9 ml/min.

For more separations, please see the Chiral Applications guide on www.chromtech.se

Cellobiohydrolase(CBH) is the chiral selector in the CHIRAL-CBH column. CBH is a very stable enzyme, which has been immobilized onto spherical 5 μ m silica particles. The column is used in the reversed-phase mode. The column is preferably used for the separation of enantiomers of basic drugs from many compound classes. The retention and the enantioselectivity can be regulated by changes in pH, buffer concentration and the nature and the concentration of organic modifier.

The **CHIRAL-CBH** column is available in different dimensions:

Column ID:	Column length:
4 mm	50, 100 and 150 mm
3 mm	100 and 150 mm
2 mm	50, 100 and 150 mm
10 mm	100 and 150 mm

Guard cartridges are available in 10x2 mm, 10x3 mm and 10x4 mm (2-packs).