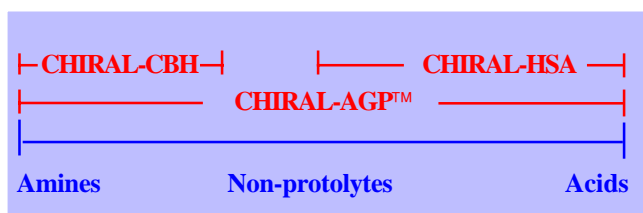


How to choose chiral column

CHIRAL-AGP™, **CHIRAL-CBH** and **CHIRAL-HSA**: when to choose which column? To separate a hydrophobic amine, which of these columns is the best choice? Below is a figure, demonstrating the application area for the three different columns.



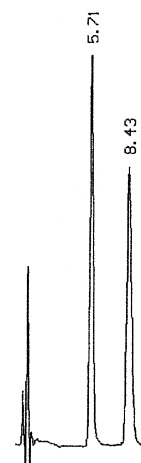
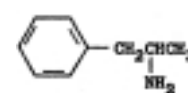
CHIRAL-CBH

Separates preferably **basic compounds** also containing **an alcohol, phenol, carbonyl, amide, ether, ester etc.** (strong hydrogen bonding groups).

However, **CHIRAL-CBH** can also be used for the resolution of basic compounds **containing a weak hydrogen bonding group** (benzene ring) as is exemplified by amphetamine.

First choice for aminoalcohols and very hydrophilic amines

Amphetamine



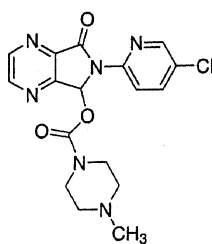
CHIRAL-AGP™

Extremely broad applicability. Separates enantiomers of all types of compounds:

- **amines** (primary, secondary, and tertiary amines as well as quaternary ammonium compounds)
- **acids** (strong (=carboxylic acids, sulphonic acids, etc.) and weak acids)
- **non-protolytes** (amides, esters, alcohols, sulphoxides, etc.)

First choice for all types of compounds, except those listed for the other two columns

Zopiclone

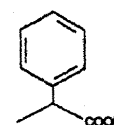


CHIRAL-HSA

Separates preferably **weak and strong acids, zwitterionic and non-protolytic compounds.**

First choice for very hydrophilic acids and zwitterions

2-phenylpropionic acid



If in any doubt on which column to choose, please contact support@chromtech.co.uk. Please also remember the **Free Screening Service**, where compounds will be tested on these columns.

www.chromtech.co.uk