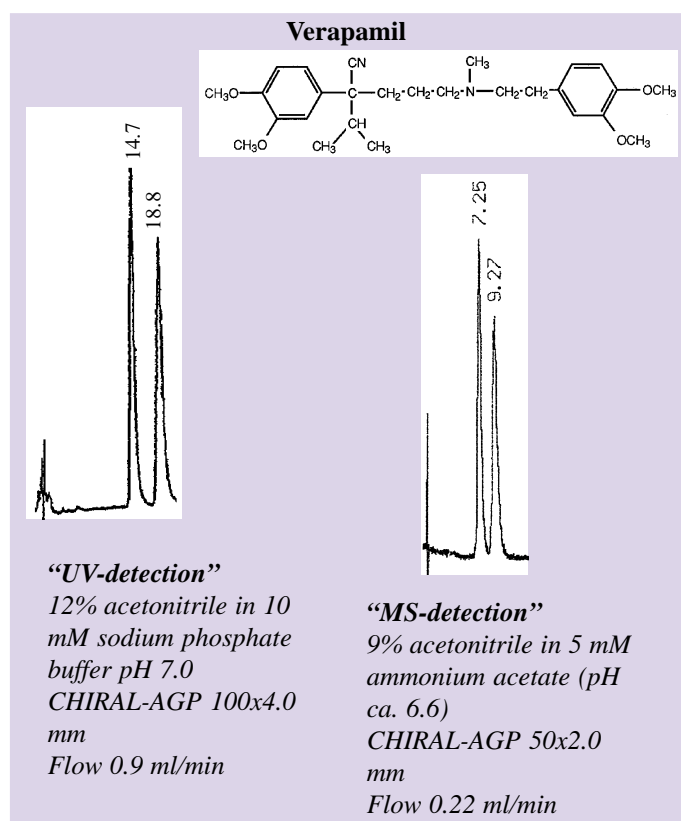
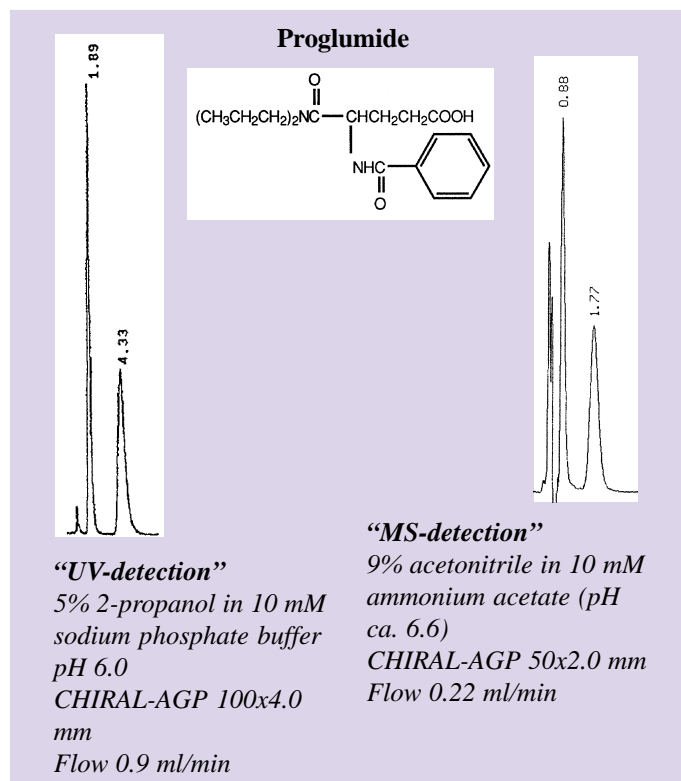
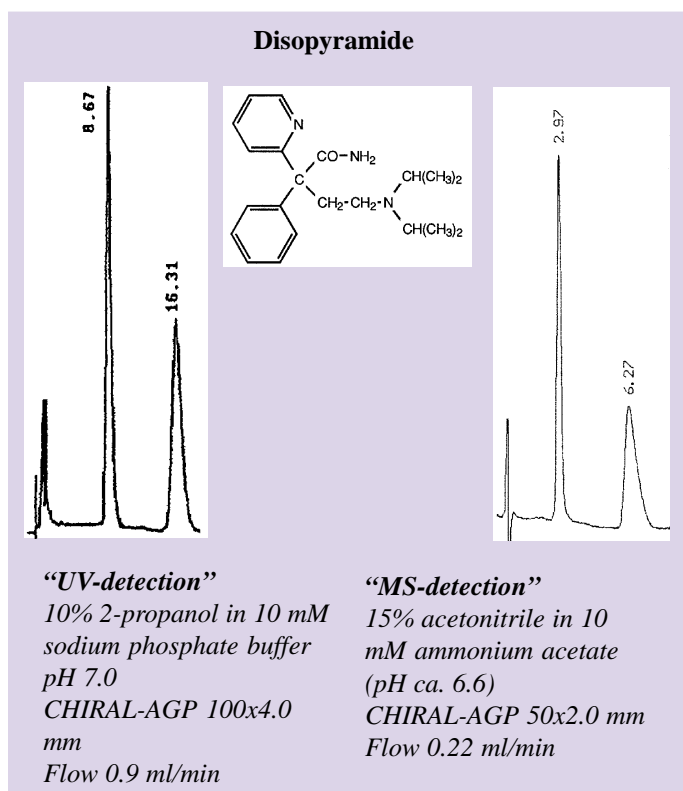


Method Development for LC/MS detection

Most methods in the Chiral Application Handbook and on www.chromtech.co.uk on the **CHIRAL-AGP™** column are optimized for UV or fluorescence detection. However, these methods can easily be converted to methods compatible with MS-detection using the guidelines given in this Application Bulletin.

Conversion from UV-method to LC/MS method

The type and concentration of buffer is important when developing methods for MS-detection. Methods based on phosphate or other nonvolatile buffers can easily be transformed to MS compatible methods, by changing to ammonium acetate or ammonium formate buffers. In most cases short columns are preferred as well as columns with a small inner diameter. Below are some examples of converted methods.



The New Chiral Application handbook is now available. Please order your copies from support@chromtech.co.uk