

Recently developed chiral methods

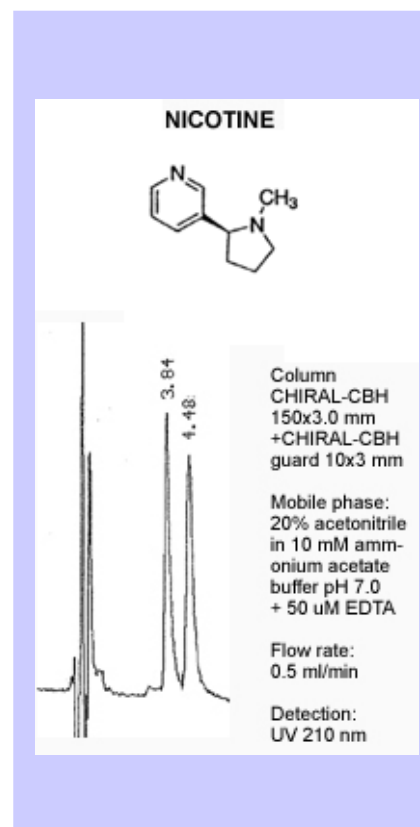
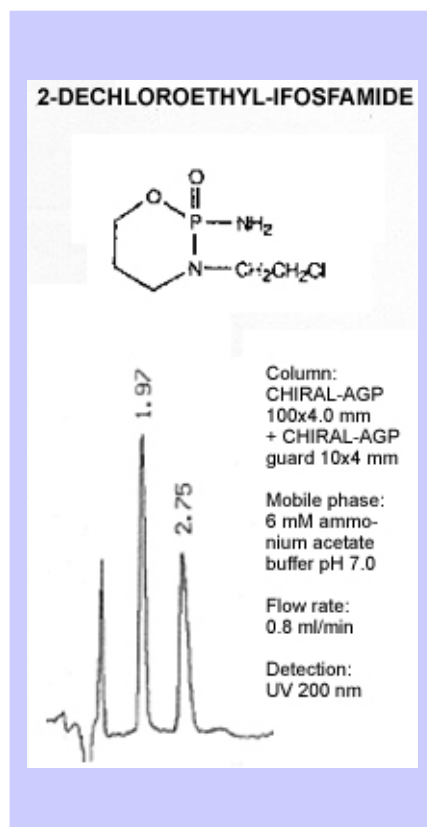
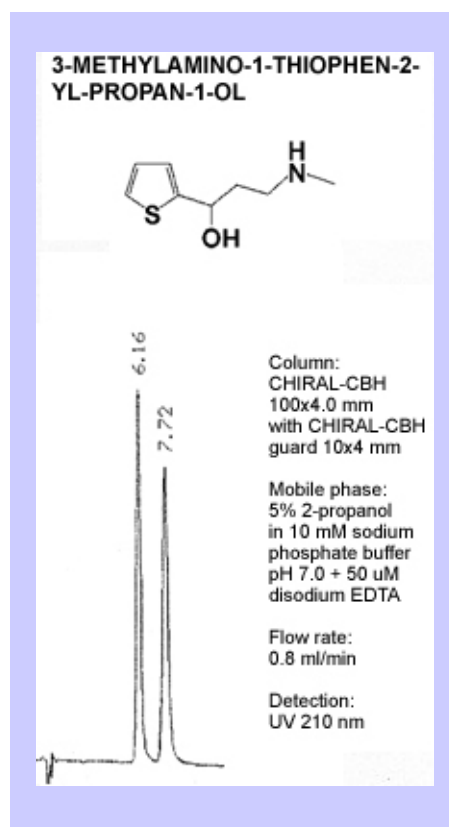
The Application Bulletin presents a selection of recently developed methods on **CHIRAL-AGP**, **CHIRAL-CBH** and **CHIRAL-HSA**. The selection demonstrates how well the columns complement each other. Basic, acidic as well as multifunctional nonprotolytic compounds have been resolved.

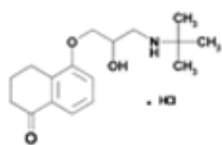
The Free Chiral Screening offered by ChromTech is a valuable tool. A large amount of samples are received every year. Most samples are from pharmaceutical companies and are covered by secrecy agreements which means that the applications can not be published. Applications on compounds not covered by secrecy agreements are continuously published on the website, www.chromtech.co.uk

A form for the free screening service can be downloaded from the website.

This selection of new applications contains compounds of different character which is shown in the table to the right.

Compound	Character
3-Methylamino-1-thiophen-2-yl-propan-1-ol	Secondary amine
2-Dechloroethyl-ifosfamide	Phosphamide
Nicotine	Tertiary amine
Bunolol	Secondary amine
Albuterol (Salbutamol)	Secondary amine
Nutlin-3	Multifunctional
2-(4-Methoxy-benzyl)-5-methyl-3-oxo-2-aza-bicyclo(4.1.0)heptane-7-carbox. acid ethyl ester	Multifunctional nonprotolyte
Imazamethabenz-methyl	Multifunctional/Acid
5-(1-(3,4,5-trimethoxyphenyl)propyl)pyrimidine-2,4-diamine	Multifunctional/Amine



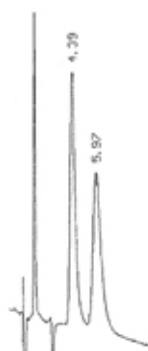
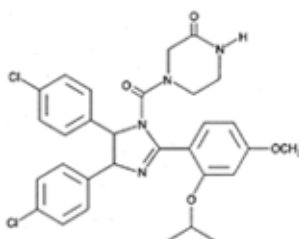
BUNOLOL


Column:
CHIRAL-AGP
100x4.0 mm
with CHIRAL-AGP
guard 10x4 mm

Mobile phase:
12% acetonitrile in
10 mM ammonium
acetate

Flow rate:
0.8 ml/min

Detection:
UV 223 nm

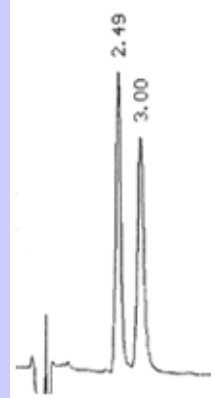
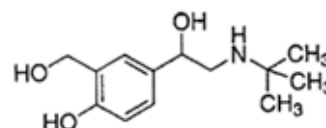
NUTLIN-3


Column:
CHIRAL-HSA
100x4.0 mm +
CHIRAL-HSA
guard 10x4 mm

Mobile phase:
15% acetonitrile
in 10 mM sodium
phosphate buffer
pH 7.0

Flow rate:
0.8 ml/min

Detection:
UV 210 nm

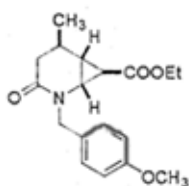
ALBUTEROL (SALBUTAMOL)


Column:
CHIRAL-CBH
100x4.0 mm +
CHIRAL-CBH
guard 10x4 mm

Mobile phase:
5% 2-propanol in
10 mM sodium
phosphate buffer
pH 7.0 + 50 uM
disodium EDTA

Flow rate:
0.9 ml/min

Detection:
UV 210 nm

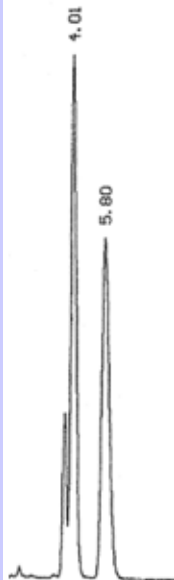
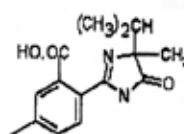
2-(4-METHOXY-BENZYL)-5-METHYL-3-OXO-2-AZA-BICYCLO(4.1.0)HEPTANE-7-CARBOXYLIC ACID ETHYL ESTER


Column:
CHIRAL-AGP
100x4.0 mm
with CHIRAL-AGP
guard 10x4 mm

Mobile phase:
9% 2-propanol in
10 mM sodium
phosphate buffer
pH 7.0

Flow rate:
0.8 ml/min

Detection:
UV 225 nm

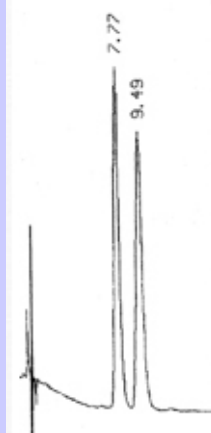
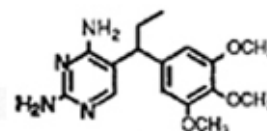
IMAZAMETHABENZ-METHYL


Column:
CHIRAL-AGP
100x4.0 mm
with CHIRAL-AGP
guard 10x4 mm

Mobile phase:
6% 2-propanol in
10 mM sodium
phosphate buffer
pH 7.0

Flow rate:
0.8 ml/min

Detection:
UV 225 nm

5-(1-(3,4,5-TRIMETHOXYPHENYL)PROPYL)PYRIMIDINE-2,4-DIAMINE


Column:
CHIRAL-AGP
100x4.0 mm
+ CHIRAL-AGP
guard 10x4 mm

Mobile phase:
3% 2-propanol +
5% acetonitrile in
10 mM sodium
phosphate buffer
pH 7.0

Flow rate:
0.8 ml/min

Detection:
UV 225 nm