

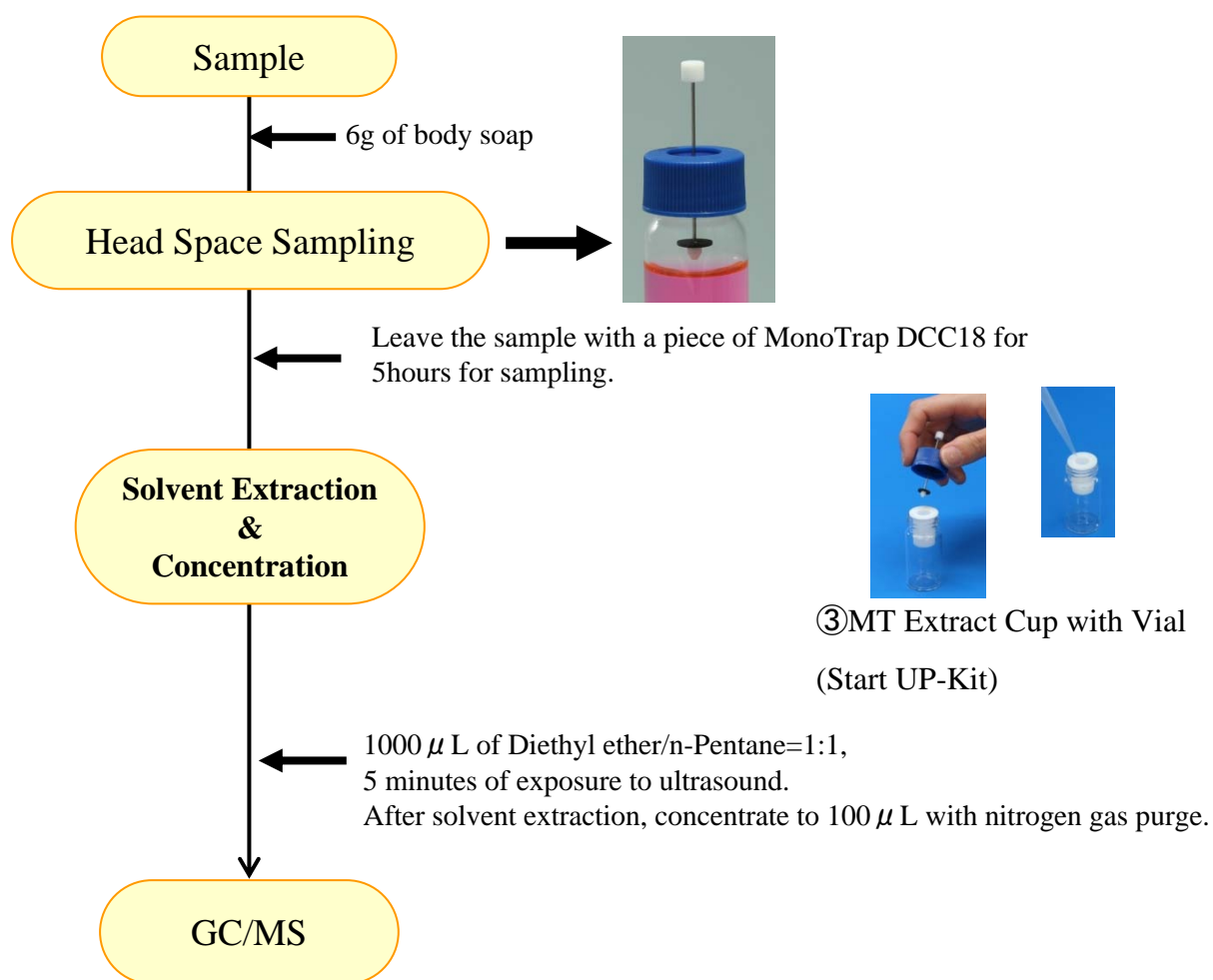
Simple analysis of the aroma components of body soap after concentration

MonoTrap™ is a silica-based adsorptive. This product can be characterized by through pour (due to the monolith structure of the silica base) and a large surface (due to the pores within the silica frame). Active carbon is used as an adsorptive on the silica frame surface to which octadecyl (ODS) group has been conjugated.

MonoTrap™ can be viewed as a new hybrid adsorptive having a large surface area and possessing the features of silica gel, active carbon and ODS group.

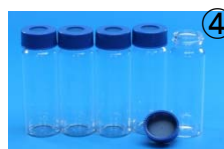
In the current experiment, MonoTrap™ RCC18 (containing activated carbon) was used for the simple analysis of the aroma components of body soap after concentration using the HS method.

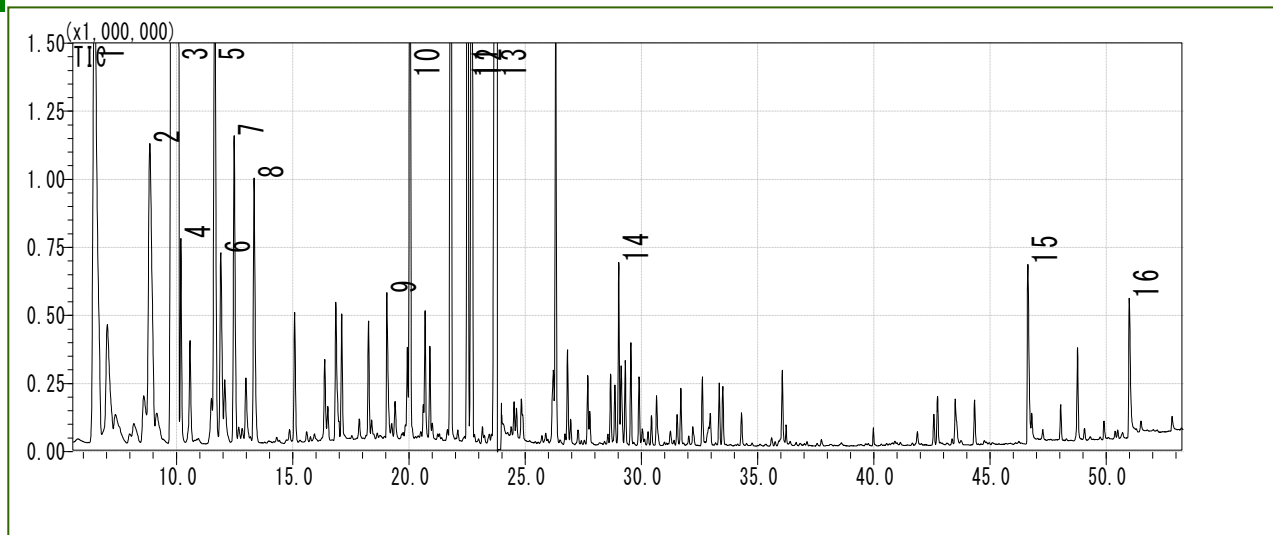
Pretreatment procedures



MonoTrap™ Start-UP-KIT for easy concentration and extraction!

	Name	amount
①	MT Holder	5
②	MT Stand	1
③	MT Extract Cup with Vial(20ml)	5
④	Clean Pin Hole Septum with vial(40ml)	5
⑤	200 μ L Glass insert (Flat bottom)	40
⑥	MonoTrap™ DCC18	20
⑦	MonoTrap™ RCC18	20
⑧	MonoTrap™ DSC18	20
⑨	MonoTrap™ RSC18	20





- | | | | |
|---|--------------------|----|--------------------------------|
| 1 | β -Pinene | 9 | Acetic acid |
| 2 | β -Myrcene | 10 | Dihydromyrcenol |
| 3 | D-Limonene | 11 | β -Linalool |
| 4 | Sabinen | 12 | 4-tert-Butylcyclohexyl acetate |
| 5 | γ -Terpinen | 13 | Propylene Glycol |
| 6 | Styrene | 14 | β -Citronellol |
| 7 | p-Cymene | 15 | Dodecanoic acid |
| 8 | Octanal | 16 | Tetradecanoic acid |

※Identified with spectral libraries

GC/MS analysis

System :SHIMADZU GC-2010、GCMS-QP2010 Plus

Column :InertCap Pure-WAX(Cat.1010-68142)**New!!**

0.25mmI.D. × 30m df=0.25 μ m

Column Temp:40°C(5min)→4°C/min→250°C(5min)

Carrier Gas:He 120kPa

Injection :Split /Splitless,1 μ L

250°C

Detection:MS Scan (m/z;40-350)



Contact us
<http://www.glsciences.com/products.html>