

Square Flexible Fused Silica Capillary Tubing

- **WWP:** Square ID / Square OD

Polymicro Technologies now offers a new square cross-section, flexible fused silica capillary tubing with a durable polyimide coating.

Custom configurations or alternate buffer coatings can be made available on special order.

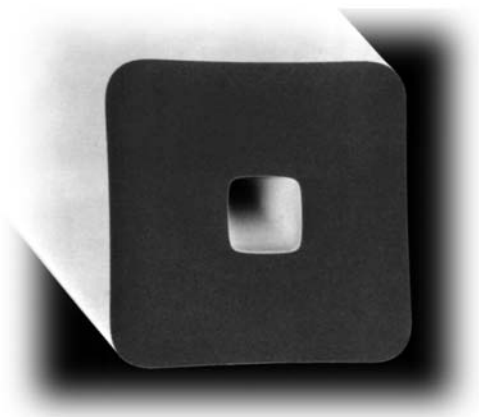
Advantages

- Eliminates the need to correct for the optical effect of curved capillaries in Capillary Electrophoresis (CE).
- Offers larger effective internal surface area.
- Flat sides create 27% more volume and 2X the transverse optical interaction path length (using a collimated beam) than that of a round capillary configuration.
- Ideal geometry for use in on-column orthogonal fluorescence detection schemes.

Square Capillary Tubing Sizes

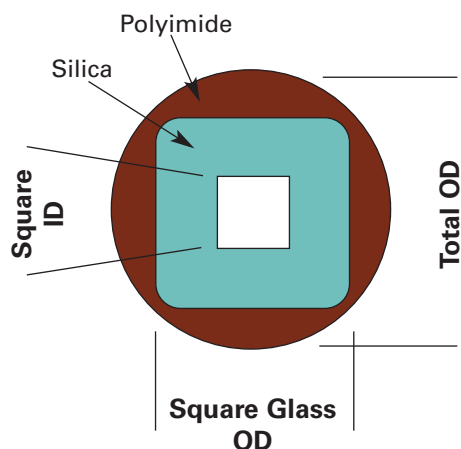
Product Descriptor	ID* (µm)	Glass OD* (µm)	Total OD* (µm)
WWP050375	050 ± 05	300	363 ± 15
WWP075375	075 ± 05	300	363 ± 15
WWP100375	100 ± 05	300	363 ± 15

* Measured flat-to-flat.



WWP Characteristics

- Standard Polyimide Coating
- Synthetic Fused Silica
- High Strength
- Operation up to 350°C
Intermittent up to 400°C



QUALITY MANAGEMENT SYSTEM
CERTIFIED BY DNV
== ISO 9001:2000 ==

18019 N. 25th Avenue • Phoenix, AZ 85023-1200
Voice: (602) 375-4100 Fax: (602) 375-4110
E-Mail: sales@polymicro.com
URL: <http://www.polymicro.com>

- Flexible Capillary
- Multimode Optical Fiber
- Specialty Assemblies
- Micro-Components